



**HAL**  
open science

# From temporal to spatiotemporal dynamics in transitional plane Couette flow

Jimmy Philip, Paul Manneville

► **To cite this version:**

Jimmy Philip, Paul Manneville. From temporal to spatiotemporal dynamics in transitional plane Couette flow. *Physical Review E: Statistical, Nonlinear, and Soft Matter Physics*, 2011, 83 (3), pp.036308. 10.1103/physreve.83.036308 . hal-00997976

**HAL Id: hal-00997976**

**<https://polytechnique.hal.science/hal-00997976>**

Submitted on 17 Jul 2014

**HAL** is a multi-disciplinary open access archive for the deposit and dissemination of scientific research documents, whether they are published or not. The documents may come from teaching and research institutions in France or abroad, or from public or private research centers.

L'archive ouverte pluridisciplinaire **HAL**, est destinée au dépôt et à la diffusion de documents scientifiques de niveau recherche, publiés ou non, émanant des établissements d'enseignement et de recherche français ou étrangers, des laboratoires publics ou privés.

# From temporal to spatiotemporal dynamics in transitional plane Couette flow

Jimmy Philip and Paul Manneville

*Laboratoire d'Hydrodynamique, Ecole Polytechnique, 91128 Palaiseau, France*

(Received 26 October 2010; published 14 March 2011)

Laboratory experiments point out the existence of patterns made of alternately laminar and turbulent oblique bands in plane Couette flow (PCF) on its way to or from turbulence as the Reynolds number  $R$  is varied. Many previous theoretical and numerical works on the problem have considered small-aspect-ratio systems subjected to periodic boundary conditions, while experiments correspond to the opposite limit of large aspect ratio. Here, by means of fully resolved direct numerical simulations of the Navier-Stokes equations at decreasing  $R$ , we scrutinize the transition from temporal to spatiotemporal behavior in systems of intermediate sizes. We show that there exists a streamwise crossover size of order  $L_x \sim 70\text{--}80h$  (where  $2h$  is the gap between the plates driving the flow) beyond which the transition to or from turbulence in PCF is undoubtedly a spatiotemporal process, with typical scenario turbulent flow  $\rightarrow$  riddled regime  $\rightarrow$  oblique pattern  $\rightarrow$  laminar flow, whereas below that size it is more a temporal process describable in terms of finite-dimensional dynamical systems with the scenario chaotic flow  $\rightarrow$  laminar flow (via chaotic transients). In the crossover region, the oblique pattern stage is skipped, which leads us to suggest that an appropriate rendering of the patterns observed in experiments needs a faithful account of streamwise correlations at scales at least of the order of that crossover size.

DOI: [10.1103/PhysRevE.83.036308](https://doi.org/10.1103/PhysRevE.83.036308)

PACS number(s): 47.54.-r, 47.20.-k, 47.27.-i

## I. INTRODUCTION

During the last few years there has been a resurgence of interest regarding the formation of laminar-turbulent patterns in wall-bounded shear flows having very large aspect ratios (when the lateral dimensions, along  $x$  and  $z$ , are more than two orders of magnitude larger than the relevant wall-normal dimension, along  $y$ ). The phenomenon was discovered in circular Couette flow (CCF) by Coles and Van Atta [1,2] who called it “spiral turbulence.” The pattern can be observed when the two cylinders of CCF rotate in opposite directions in a specific velocity range, which is only a part of the complete bifurcation diagram [3]. Only one or two stripes of the laminar-turbulent pattern were observed in those experiments owing to their low aspect ratio (the ratio of the perimeter to the gap between the cylinders). It was only later that Prigent *et al.* [4] made detailed measurements of the relevant features of this phenomenon in their very-large-aspect-ratio setup, where about 10–15 stripes could be obtained.

A similar event of laminar-turbulent pattern formation was also observed by the same team [4] in large-aspect-ratio plane Couette flow (PCF), a schematic of which is shown in the top panel of Fig. 1, the bottom one displaying a snapshot of the pattern obtained experimentally. When the control parameters of CCF and PCF are made equivalent by using appropriate scales, both CCF and PCF display patterns in almost the same parameter range [5], with the obvious difference of streamwise periodicity present in CCF and not in PCF. In the following we leave aside the case of CCF, whose bifurcation diagram is slightly more complicated owing to the interplay of centrifugal instability mechanisms, and concentrate our attention on PCF in the range of parameters relevant to the transition to turbulence.

Traditionally, the control parameter is the Reynolds number, and for PCF it is defined as  $R := U_p h / \nu$ , here based on the half channel height  $h$ , the plate velocity  $U_p$ , and the kinematic viscosity  $\nu$ ; in the following  $h$  and the advection time  $\tau_a = h / U_p$  are used as length and time units, respectively.

(The viscous relaxation time is  $\tau_v = h^2 / \nu$ , so that  $R = \tau_v / \tau_a$ .) The transition process can be studied by increasing or decreasing  $R$ . The essential point is that the laminar flow is stable against infinitesimal perturbations for all  $R$ , so that a direct transition to turbulence is observed when finite-amplitude perturbations are introduced, according to a *globally subcritical* scenario (for an introductory review see [9], Chap. 7). Studies at increasing  $R$  are strongly sensitive to the amplitude and shape of the triggering perturbation. Quantitatively different results about the transition can accordingly be obtained under different protocols, e.g., [7,10], while the picture of course remains qualitatively unchanged. In contrast, the experiments of Prigent *et al.* (see [11] for details) were systematically performed by varying  $R$  in small steps while waiting for statistical equilibrium at each  $R$ , which helps us to clearly identify several stages. First, beyond  $R_t \approx 410$ , turbulence is essentially uniform or “featureless,” borrowing the term introduced by Andereck *et al.* for CCF [3]. Next, oblique laminar-turbulent bands appear upon decreasing  $R$  slowly below  $R_t$ . The amplitude of the laminar-turbulent modulation grows continuously as  $R$  is further decreased, which has been interpreted as a *supercritical* bifurcation in the presence of a noise, reminiscent of featureless turbulence [4]. The bands next become fragmented and turn into irregular oblique turbulent patches which seem sustained for  $R \geq R_g \approx 325$  but decay in a finite time for  $R < R_g$ . The value of  $R_g$  mentioned above has also been obtained in experiments where turbulent spots were triggered [6,7]. Below  $R_g$  the lifetimes of turbulent spots are distributed according to decreasing exponentials whose characteristic time is seen to diverge as  $R$  approaches  $R_g$  from below [6]. Finally, for  $R < R_u \approx 280$  large perturbations relax without measurable waiting time and in a mostly monotonic way.

Direct numerical simulation (DNS) of these large-aspect-ratio systems was delayed because of the huge computational requirements. Barkley and Tuckerman [12] were the first to obtain the band patterns in fully resolved simulations of the Navier-Stokes equations, but in carefully chosen narrow

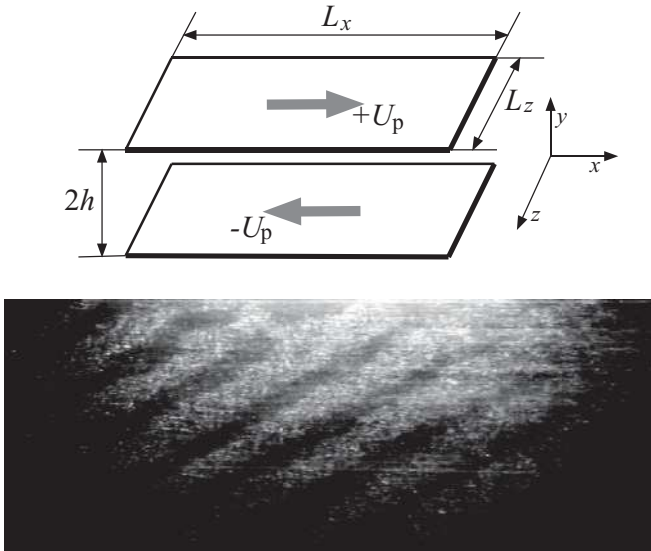


FIG. 1. Top: Schematic of PCF with top and bottom plate moving at  $\pm U_p$  (at  $y = \pm h$ ) separated by a distance  $2h$ . Bottom: Experimental visualization of laminar (dark)–turbulent (light) pattern in PCF at  $R = 358$ ,  $L_x = 770h$ , and  $L_z = 430h$  (courtesy of A. Prigent). For comparison, most of Bottin’s experiments were performed with  $L_x = 284h$  and  $L_z = 72.6h$  [6,7]. The size of the minimal flow unit (MFU) is  $\lambda_x = 2\pi/\alpha$ ,  $\lambda_z = 2\pi/\gamma$ , where  $\alpha$  and  $\gamma$  are the fundamental wave numbers in the streamwise and spanwise directions, respectively. Here we take the values corresponding to the self-sustained exact solution found by Waleffe [8],  $\alpha = 0.49$  and  $\gamma = 1.5$  and thus  $\lambda_x = 12.8$  and  $\lambda_z = 4.2$ .

and tilted computational domains. Their choice of domain, however, precluded the occurrence of patterns with defects or orientation changes inside the flow. This restriction was overcome in the DNS by Duguet *et al.* [13] who recovered the experimental findings of Prigent *et al.* in a fully resolved very-large-aspect-ratio system. Similarly, the spiral regime of CCF was numerically obtained by Meseguer *et al.* [14] and Dong [15]. An oblique band pattern was also found numerically by Tsukahara *et al.* [16] in the case of plane Poiseuille flow (PPF). The above three systems, CCF, PCF, and PPF, are prototypical for the study of laminar-turbulent patterns; all of them are confined by two walls in direction  $y$ , the other two dimensions extend to infinity, in the limit.

Two other flows of theoretical and technological importance showing behavior similar to the above-mentioned systems are pipe flow and the flat-plate boundary-layer flow. Pipe flow is in some sense simpler, because it has only one spatially extended dimension, the length of the pipe. Inside a specific Reynolds number range, localized patches of turbulence (“puffs”) are observed separated by laminar regions. At present it is not clear how they are related to the oblique bands in other systems [17]. On the other hand, the boundary-layer flow case gets more complicated due to the fact that the relevant wall-normal dimension, the boundary-layer thickness, increases with the flow direction and, with it, the relevant value of  $R$ . Turbulent spots that appear amid laminar flow during the transition are, however, strikingly similar to those growing into oblique bands observed in PCF.

In contrast with instabilities in *closed flow* systems such as Rayleigh-Bénard convection for which the aspect ratio is a genuine control parameter that can be varied from small to large by changing the positions of walls in all directions [9, Chap. 3], *open flows* develop most often in domains physically less constrained by lateral walls, while streamwise boundary conditions make it reasonable to accept the assumption of translational invariance in that direction, at least locally. In this respect, all of the investigations mentioned above, both experimental and numerical, are related to large-aspect-ratio systems and represent the typical situation, even if the experimental setup is difficult to construct [4,7,10] or the DNS computationally demanding [13,16]. Despite its relevance, this is not the situation that has been considered in many recent works on the transitional problem. Indeed, most of the theoretical and numerical work has been performed in configurations confined by periodic boundary conditions at small distances. Seminal work in the 1990s bore on high-resolution simulations devoted to the identification of the *minimal flow unit* (MFU) below which turbulence cannot be sustained, as was done by Jimenez and Moin [18]. Such simulations were later used for the elucidation of the *self-sustaining process* (SSP), the mechanism of sustenance of turbulence by which streamwise vortices induce streaks that break down to regenerate the vortices, following Hamilton *et al.* [19]. They were applied next to the discovery of exact coherent states of Navier-Stokes equations, following Nagata [20] and Waleffe [8], and to the study of the boundary of the attraction basin of the laminar flow [21].

In fact, setting boundary conditions at small distances reduces the infinite-dimensional dynamical problem posed by the Navier-Stokes equations to a finite-dimensional problem as long as  $R$  remains moderate, which is the case in the transitional regime (but would be insufficient in the high- $R$  limit where fine vortical structures develop already at the level of the MFU). Accordingly all the works in small domains to some extent have come under the purview of temporal dynamics and chaos theory. The investigation of such small systems has indeed been extremely valuable [21,22], with important achievements such as the recent findings of “edge states” and “localized solutions” in PCF [23,24], as an encouragement to make the connection to special solutions and associated bifurcation structures obtained in pattern-forming model equations [25,26].

However, any accurate representation of the dynamics at the level of the MFU, though remaining instructive, is not informative of the experimental situation since the smallest setups that have been used should rather be analyzed as two-dimensional arrays made of tens or hundreds of MFUs (see caption of Fig. 1), which allows for global spatiotemporal dynamics, while placing periodic boundary conditions at the scale of the MFU grossly overestimates the coherence of the flow. The size of the system ( $\gg$ MFU) and the coexistence of two possible local states, either laminar or chaotic, each corresponding to a possible temporal regime at the MFU scale, make it possible for whole regions, either laminar or turbulent, to coexist in physical space. The possibility of such modulations is at the root of the recourse to concepts from

the theory of spatiotemporal chaos [27]. Within this general framework, the pattern  $\rightarrow$  featureless transition in PCF, CCF, and other similar flows appears to be a symmetry-restoring bifurcation observed upon increasing  $R$  for which an order parameter can be defined [4,28], with the understanding that the base state is the translationally invariant, strongly noisy, featureless regime beyond  $R_t$ .

A previous attempt to reach the spatiotemporal level directly via modeling by one of us [29], though promising [30], failed to reproduce the bands, due to insufficient wall-normal resolution. Another avenue to spatiotemporal dynamics is through DNS of the Navier-Stokes equations but, as already mentioned, long-duration simulations of wide enough domains is still too demanding. Reduction of the wall-normal resolution has been shown to be a viable option at a qualitative level [31] but it was not clear that the quantitative shift observed in the transitional range  $[R_g, R_t]$  was without hidden consequence for the pattern formation problem.

The aim of the present work is at studying, by means of fully resolved DNS of the Navier-Stokes equations, what happens when the system size  $L$  (to be defined more precisely later) increases and the temporal dynamics gives way to spatiotemporal dynamics. The next section anticipates the outcome of the study before giving details on the numerics. Section III contains the main results extracted from the numerical simulations as well as the bifurcation diagram. The final section summarizes the study and draws conclusions.

**II. GENERAL FRAMEWORK FOR THE STUDY OF TRANSITIONAL PCF**

**A. Expected bifurcation diagram for the turbulent-laminar transition**

Figure 2 gives a schematic three-dimensional view of the bifurcation diagram for transitional PCF in the two well-studied cases of MFU-like systems and large-aspect-ratio systems, and proposes an interpolation between these two cases as an educated guess. We use  $R$ ,  $D$ , and  $L$  as the coordinate system. In addition to  $R$ , the Reynolds number,  $D$  is a measure of the distance to laminar flow, e.g., the

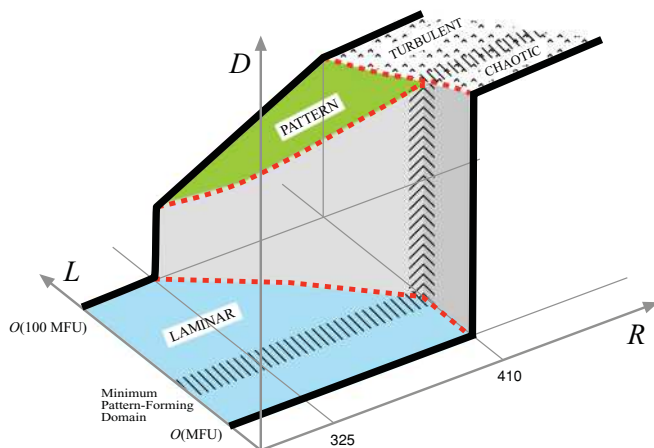


FIG. 2. (Color online) Schematic of the expected bifurcation diagram for PCF including the locations of domains with size of the order of the MFU, and that of pattern-forming systems.

time-averaged, domain-averaged rms of the velocity departure from the laminar flow profile, and  $L$  is the characteristic lateral domain size. The diagram shows two thick black lines in two  $(R-D)$  planes, one at  $L = O(\text{MFU})$  and the other at  $L = O(100 \text{ MFU})$  where “100” is just meant to be a large number typical of laboratory experiments. They sketch the variation of  $D$  as a function of  $R$ , as the latter parameter is gradually reduced from a high value where the system is turbulent.

The first curve, at  $L = O(\text{MFU})$  is typical of a *subcritical* bifurcation with an abrupt jump from turbulence ( $D$  finite and large) to laminar flow ( $D = 0$ ). Here it is just a tentative sketch of the ideal situation where temporal chaos would break down in a single stage via attractor crisis [32]. This guess is consistent with the observations of exponentially distributed lifetimes of chaotic transients and the divergence of the average lifetime as the putative crisis point is approached [21]. In fact, the very existence of a crisis at finite  $R$  (here situated around  $R = 410$ ) has not been proved so far but this does not change our picture drastically.

In contrast, the second line at  $L = O(100 \text{ MFU})$  corresponding to large-aspect-ratio systems is supported by laboratory and computer experiments [4,13]. As  $R$  is lowered below  $R_t \approx 410$ , the distance  $D$  begins to decrease owing to the coexistence of laminar and turbulent regions in variable amounts in the whole domain. Whereas the turbulence intensity seems to decrease only slightly with  $R$ , the main part of the decrease of  $D$ , a quantity averaged over the whole surface of the system, has to be attributed to the increase of the laminar fraction, the complement of the turbulent fraction. The spatial organization of this laminar-turbulent coexistence is expressed by the term PATTERN (henceforth shortened as P) used in the figure. At  $R_g \approx 325$ , the distance  $D$  drops to zero because the regime observed in the long-time limit is laminar, but this does not mean that one cannot observe transiently turbulent patches with smaller turbulent fraction and exponentially distributed lifetimes [6].

The thick red dashed lines in Fig. 2 suggest changes in the diagram as  $L$  varies, showing two regions more: LAMINAR (L) and TURBULENT (T) or CHAOTIC (C). When  $L$  is large, T actually means “featureless turbulence” but, when  $L$  is small, “temporal chaos” would better reflect the spatial coherence in the flow, hence the C. This coherence prevents the emergence of subdomains that could be identified as laminar or turbulent in the system, which is no longer the case when  $L$  gets larger. For reasons of topological continuity, there should be a crossover size (shown by a hatched band) below which PCF displays two states, L and C, and above which three states, L, P, and T, the hatched band extending into the C and T region to mark the change from temporal chaos to spatiotemporal chaos. It will be shown below that such a bifurcation diagram indeed exists, with, however, some peculiarities in the P region.

**B. Numerical simulation details**

Direct numerical simulation of the Navier-Stokes equations is carried out using Gibson’s well-tested, freely available DNS software CHANNELFLOW [33]. It is a pseudospectral code using Chebyshev polynomials in the wall-normal direction with no-slip conditions at  $y_p = \pm 1$  and in-plane Fourier modes



TABLE I. Computational domains and the corresponding grid points.

$L_x, L_z$	$N_x, N_z$	$L_x/N_x$	$L_z/N_z$	$L$	$\theta$ (deg)
$5\pi, 2\pi$	64,32	0.25	0.19	16.9	21.8
24,9	94,32	0.26	0.28	25.6	20.6
32,15	128,64	0.25	0.23	35.3	25.1
60,26	192,96	0.31	0.27	65.4	23.4
70,30	282,128	0.25	0.23	76.2	23.2
80,35	384,192	0.21	0.18	87.3	23.6
90,40	384,192	0.23	0.21	98.5	24.0
100,45	384,192	0.26	0.23	109.6	24.2
128,64	512,256	0.25	0.25	143.1	26.6

adapted to periodic boundary conditions at distances  $L_{x,z}$  in the  $(x,z)$  directions. The number of Chebyshev modes is  $N_y = 33$ , which is well suited to resolve all the relevant modes of turbulent flow in the range of  $R$  studied according to Duguet *et al.* [13].<sup>1</sup> The time step is such as to keep the Courant-Friedrichs-Lewy (CFL) number between 0.4 and 0.6. Some details of the various domains used in simulations are given in Table I, where  $N_x$  and  $N_z$  are the number of collocation points in the  $x$  and  $z$  directions, respectively, and  $L_x$  and  $L_z$  the corresponding domain lengths. Since the 3/2 rule is applied in all cases to remove aliasing, this corresponds to solutions in the Fourier space using  $N'_{x,z} = \frac{2}{3}N_{x,z}$  modes, or equivalently to space steps  $L_{x,z}/N'_{x,z} = \frac{3}{2}L_{x,z}/N_{x,z}$ . Domains are chosen with increasing size, measured here by the diagonal length  $L := \sqrt{L_x^2 + L_z^2}$ , which will also be used in referring to various simulations. Moreover, in all cases  $\theta := \tan^{-1}(L_z/L_x)$  is kept between  $20^\circ$  and  $30^\circ$ , consistent with previous investigations [4,34]. For certain domain sizes, extra computations with an increased number of grid points are also carried out to ensure the independence of grid resolution, e.g., for  $L = 16.9$ ,  $N_x$  was raised to 96, and for  $L = 65.4$ ,  $(N_x, N_z)$  were raised to (282,128) without any significant quantitative changes in the results.

The laminar base flow simply reads  $\mathbf{v}_{\text{lam}} = y\hat{\mathbf{x}}$ , where  $\hat{\mathbf{x}}$  is the unit vector in the streamwise direction. The velocity perturbation  $\tilde{\mathbf{v}}$  is obtained as  $\tilde{\mathbf{v}} = \mathbf{v} - y\hat{\mathbf{x}}$ , where  $\mathbf{v} := u\hat{\mathbf{x}} + v\hat{\mathbf{y}} + w\hat{\mathbf{z}}$  is the instantaneous velocity field solution to the Navier-Stokes equations that are simulated. For further reference, Fig. 3 displays typical snapshots of the solutions obtained for  $R = 410$  in the different domains that we consider. We illustrate the fluctuation field using  $u$  evaluated in the plane  $y = 0$ , which is a direct trace of the perturbation since  $\mathbf{v}_{\text{lam}} \equiv \mathbf{0}$  there. The different domains are displayed, starting with  $L = 143.1$  and decreasing the size from top left to bottom right. The snapshots presented are approximately proportional to the domain sizes. Colors red and blue correspond to  $u \approx \pm 0.5$ . These images show that the very large structures discovered by Komminaho *et al.* [35], in a domain of size  $28\pi \times 8\pi$

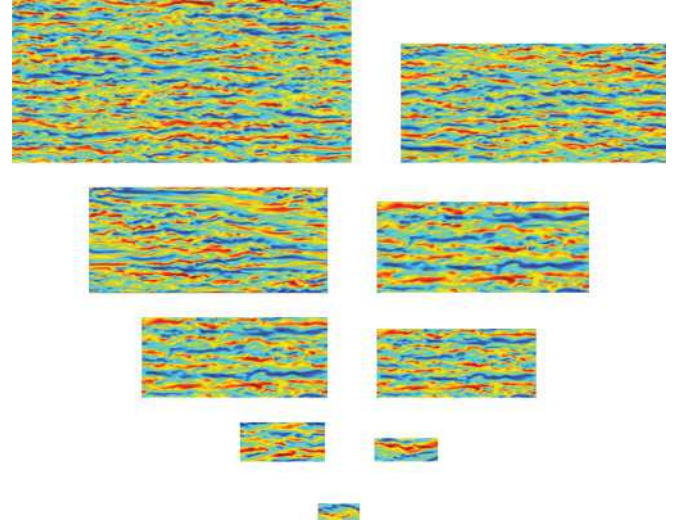


FIG. 3. (Color online) Streamwise velocity fluctuations ( $u$ ) in the plane  $y = 0$  for different domains at  $R = 410$ :  $L = 143.1$  (top left), 109.6 (top right), 98.5, 87.3, 76.2, 65.4, 35.3, 25.6, and 16.9 (bottom).

( $L \simeq 91.5$ ) at  $R = 750$  deep inside the featureless regime, are already present at  $R = 410$ , in the immediate vicinity of  $R_t$ . In all cases the flow fields are dominated by streamwise elongated (or streaky) structures which are more or less alternating in the spanwise direction. In the smallest domains, the development of these streaky structures is severely constrained. In larger domains, i.e., for  $L = 76.2$  and larger, pockets of laminar flow can be observed already at  $R = 410$ . More details about these structures and their significance as  $R$  is decreased will be discussed in the subsequent sections.

The results to be described now, in connection to the temporal vs spatiotemporal issue in domains of sizes varying from a few units of MFU to ones where patterns or bands appear, are all obtained using an “adiabatic protocol” to be described below according to which, starting from a turbulent state at high Reynolds number,  $R$  is reduced by steps of  $\Delta R$  and the simulation is run for  $\Delta T$ , repeatedly down to the laminar regime.

### III. RESULTS

#### A. Fluctuations in varying domain size

Here we use two global measures of fluctuation intensity, the overall *rate of energy dissipation* per unit volume,

$$\mathcal{D} := \frac{1}{L_x L_y L_z} \int_0^{L_x} \int_{-1}^1 \int_0^{L_z} (|\nabla u|^2 + |\nabla v|^2 + |\nabla w|^2) dx dy dz, \quad (1)$$

where  $L_y = 2$ , and the *rate of mechanical energy input*,

$$\mathcal{I} := \frac{1}{L_x L_y L_z} \int_0^{L_x} \int_0^{L_z} \left( \left. \frac{\partial u}{\partial y} \right|_{y=1} + \left. \frac{\partial u}{\partial y} \right|_{y=-1} \right) dx dz. \quad (2)$$

They are normalized such that, for the laminar solution, both  $\mathcal{D}$  and  $\mathcal{I}$  are equal to 1. For any flow field, on average  $\mathcal{D}$  is

<sup>1</sup>This corresponds to an average wall-normal spacing  $\Delta y^+ = 1.81$  based on  $R_\tau = 32$ ; the superscript  $+$  denotes quantities scaled by the viscous length unit  $\nu/u_\tau$ , where  $u_\tau$  is the friction velocity  $\sqrt{\tau_w/\rho}$ ,  $\tau_w$  being the shear stress at the wall and  $\rho$  the fluid density; further,  $R_\tau$  is defined as  $u_\tau h/\nu$  and  $R_\tau = 32$  roughly corresponds to  $R = 420$ .

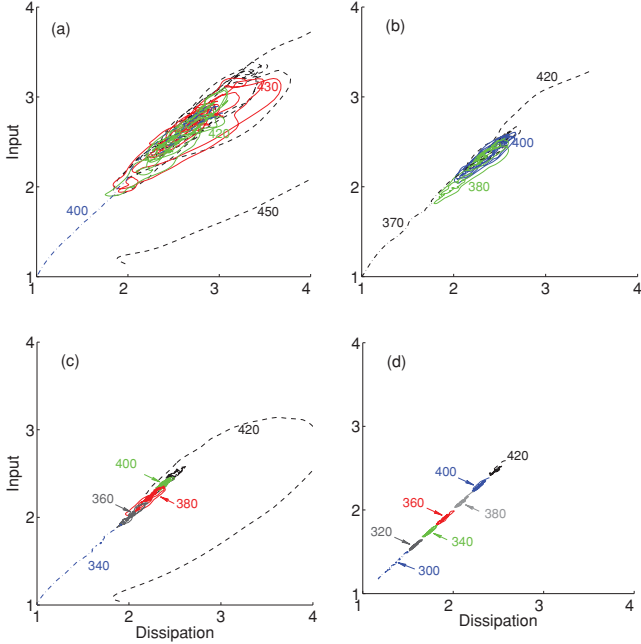


FIG. 4. (Color online) Input  $\mathcal{I}$  vs dissipation  $\mathcal{D}$  as a function of time at different  $R$ ;  $L = 16.9$  (a),  $35.3$  (b),  $76.2$  (c), and  $143.1$  (d). See text for details.

equal to  $\mathcal{I}$ , and their instantaneous difference is a measure of the fluctuation of the system's energy:

$$\mathcal{E}(t) := \frac{1}{L_x L_y L_z} \int_0^{L_x} \int_{-1}^1 \int_0^{L_z} \frac{1}{2} \|\mathbf{v}(x, y, z; t)\|^2 dx dy dz, \quad (3)$$

so that, directly from the Navier-Stokes equations, one derives  $d\mathcal{E}/dt = R^{-1}(\mathcal{I} - \mathcal{D})$ .

Figure 4 shows the trajectories followed by the system as projected on the  $\mathcal{D}$ - $\mathcal{I}$  plane for four increasing domain sizes  $L$ :  $16.9$ ,  $35.3$ ,  $76.2$ , and  $143.1$ . An adiabatic protocol is followed, similar to the annealing experiment performed by Schmiegel and Eckhardt [36] in a MFU-sized system or Barkley and Tuckerman [12] in their oblique domain. We start at  $R = 450$  for the smallest domain and at  $R = 420$  for the others. By adiabatic, we mean that  $R$  is reduced by steps  $\Delta R$  every  $\Delta T$ , the final state at a given  $R$  being used as initial condition for the simulation at  $R - \Delta R$ . Usually we take  $\Delta T = 10^3$  and  $\Delta R = 10$  for  $R \geq 320$  and  $\Delta R = 5$  below  $320$ . Not all the traces are shown in order not to overprint the figure. Traces tending to the  $(1,1)$  point in the  $\mathcal{D}$ - $\mathcal{I}$  plane express turbulent  $\rightarrow$  laminar breakdown, which is the case for  $R = 400$  when  $L = 16.9$ ,  $R = 370$  for  $L = 35.3$ , etc. This is also the case for  $R = 300$  when  $L = 143.1$  but the simulation has been interrupted before complete relaxation toward the laminar regime. For the smallest domain, it is observed that the trajectory quickly falls in the neighborhood of the diagonal ( $\mathcal{D} = \mathcal{I}$ ) and then continues to revolve in a region along this line. Decreasing  $R$  results in a slight decrease in the wandering but the point representing the state of the system stays along the diagonal and close to it. As the domain size is increased, the amplitudes of the excursions along the diagonal, and away from it,

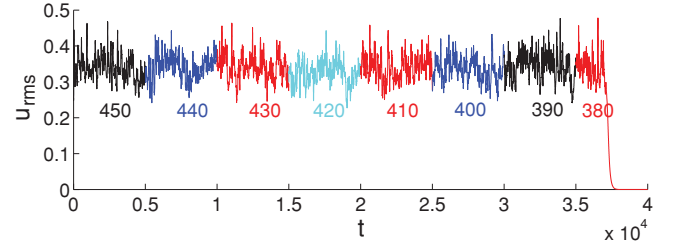


FIG. 5. (Color online) Distance to laminar flow ( $U_{\text{rms}}$ ) at different  $R$  for  $L = 16.9$ . Adiabatic protocol with time series of duration  $\Delta T = 5 \times 10^3$ .

decrease and the dynamics seems slower; the transition from one  $R$  to another also seems smoother. These characteristics can be understood as the result of averaging over larger domains, in connection with the extensive character of the featureless turbulent regime examined in Sec. III B below.

A complementary piece of information is obtained from the *distance to laminar flow*, whose time average was proposed in Fig. 2 to characterize the flow regime on a global scale. As a relevant measure of the distance, we take the volume-averaged root-mean-square value of the velocity perturbation  $\tilde{\mathbf{v}}$ , here denoted  $U_{\text{rms}}$ . Time series of this quantity during simulations performed according to the adiabatic protocol described earlier are shown in Figs. 5 and 7 in two representative cases,  $L = 16.9$  and  $L = 143.1$ , respectively:

(a) As seen in Fig. 5 for  $L = 16.9$ , while the average of  $U_{\text{rms}}$  for different  $R$  does not vary much, at some reduced  $R$  the flow suddenly relaminarizes. This process was found to be probabilistic, e.g., by Schneider *et al.* [37], and explained as arising from chaotic transients associated with the dynamics around a tangle in phase space. Snapshots taken during the decay of the chaotic state at  $R = 380$  are displayed in Fig. 6, bottom. Whereas images taken before decay look similar to the one at  $t = 2000$ , breakdown of the chaotic state is seen as a fast damping of small-scale structures ( $t = 2050$ ), leaving just a pair of streaks ( $t = 2100, 2150$ ) that progressively fade away

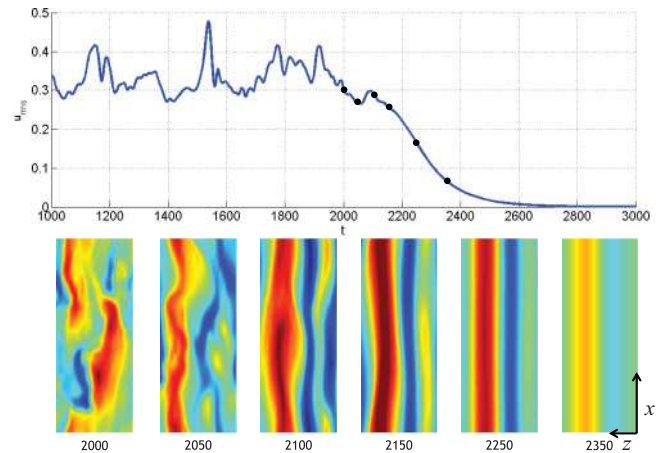


FIG. 6. (Color online) Top: Distance to laminar flow ( $U_{\text{rms}}$ ) during the end of the transient at  $R = 380$  for  $L = 16.9$ . Bottom: Snapshots during decay; time, corresponding to points on the graph, is indicated below the images; exceptionally, the streamwise direction is along the vertical.

( $t = 2250, 2350$ ). Here decay is observed for  $R = 380$  whereas a similar decay happened at  $R = 400$  in the experiment reported in Fig. 4(a), with different initial conditions and a different protocol ( $\Delta T = 10^3$  instead of  $5 \times 10^3$  here) but this merely expresses the probabilistic character of chaotic transients whose lifetimes are strongly sensitive to initial conditions [21]. It should be noted that the exact size of the domain certainly matters for such small systems since, using their annealing protocol at a velocity corresponding to the rate  $\Delta R/\Delta T = 2 \times 10^{-3}$  of Fig. 5, Schmiegel and Eckhardt [36] found that transient chaotic dynamics with a lifetime of order 2500 time units could be maintained down to  $R \simeq 310$  in a system of size  $2\pi \times \pi$ , whereas in a system of size  $5\pi \times 2\pi$  we obtain short-lived chaotic transients already at  $R = 380$  (though we have not performed a detailed statistical study). On the other hand, a definite mark of spatiotemporal dynamics will bear a much weaker sensitivity to the precise in-plane dimensions of the system.

(b) When  $L = 143.1$ , upon further lowering of  $R$  below 400, the average value of  $U_{rms}$  is seen to decrease regularly with  $R$  until relaminarization occurs, here for  $R = 300$ . Also shown in Fig. 7 are the snapshots of  $u$  at various  $R$  (indicated at top left) at the end of a simulation step ( $\Delta T = 1000$ ). At  $R = 380$ , laminar troughs, i.e., small patches where turbulence seems depleted, can be observed (and not yet patterns). Upon further reduction of  $R$  the troughs join to form a well-defined pattern of oblique bands, alternately laminar and turbulent (snapshot at  $R = 360$ ). The subsequent decrease in  $U_{rms}$  is due to the increase in the width of the laminar band. The final decay to laminar flow is neither sudden nor uniform in space as in small domains, but through a local breaking of the band leaving separated turbulent patches (see snapshot at  $R = 300$ ) that recede and disappear. Only at the very last stage, when the turbulent patches have reached a small size, do they collapse under the effects of viscous dissipation like the flow in small domains. Throughout the decay, the internal structure of the turbulent spots is not fundamentally different from that of spots growing from a finite-amplitude localized disturbance at higher Reynolds numbers, as obtained experimentally [6,7,10]

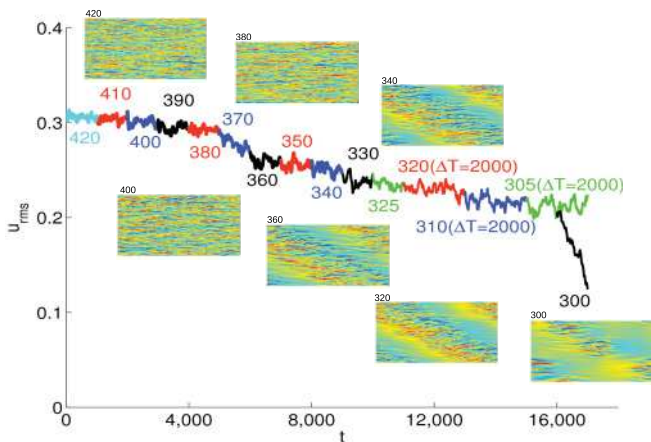


FIG. 7. (Color online) Distance to laminar flow ( $U_{rms}$ ) at different  $R$  for  $L = 143.1$  ( $\theta = 26.6^\circ$ ). Inserted figures show snapshots of  $u$  at various  $R$  (indicated on top left) after simulation over  $\Delta T = 10^3$ .

or numerically [13,38]. It should be noted that, here, decay is observed at  $R = 300$  while experiments at large aspect ratio would rather suggest decay for  $R < R_g \approx 325$ . A first reason for this delayed breakdown may be that periodic boundary conditions tend to stabilize the pattern. A second, certainly more important, reason is that according to our adiabatic protocol,  $R$  is changed by  $\Delta R$  every  $\Delta T$  and that  $\Delta R$  may be too large and  $\Delta T$  too small. Basically, the systems “knows” at which value of  $R$  the simulation is running only after several viscous relaxation times  $\tau_v = R\tau_a$ , where  $\tau_a$  is the advection time  $h/U_p$ , which is also our time unit. Accordingly,  $\Delta T = 10^3 \sim 3\tau_v$ , which is barely sufficient to reach the steady state. This is all the more true since, owing to the subcritical character of the laminar-turbulent coexistence, we should allow for long waiting times implied by the nucleation of the stable (laminar) state within the metastable (turbulent) state at the origin of the breaking of the band that causes the decay [39]. The need for long-lasting simulations in wide enough systems was indeed a strong motivation to considering under-resolved DNS as a modeling strategy [31].

**B. From temporal to spatiotemporal dynamics through probability distributions**

From a statistical point of view, energy fluctuations are best characterized by their probability distribution functions (PDFs). Figure 8 plots, in lin-log coordinates, the normalized histograms  $\Pi(E)$  of  $E(t)$  defined as the volume average of  $\frac{1}{2}\bar{v}^2$ , i.e.,  $E = \frac{1}{2}(U_{rms})^2$ , and recorded for four different domains,  $L = 16.9, 35.3, 76.2$ , and  $98.5$ , at different values of  $R$ , during runs of duration up to  $3 \times 10^4$  time units. This is much longer than for Fig. 5 or 7 and sufficient for the present purpose since the remark about the duration of the simulation does not apply as long as the system is not on the verge of decaying. All the curves display a marked hump with some variations. For the smallest domain, Fig. 8(a), neither the mean value (see also Fig. 5) nor the most probable value (MPV) of  $E(t)$  changes significantly with  $R$ ; the tail present at large  $E$  is presumably a signature of the underlying chaotic dynamics. For  $L = 35.3$  in Fig. 8(b) the curves are roughly parabolic (which corresponds to Gaussian distributions), except for  $R = 380$ . The MPV stays fixed with  $R$  as for  $L = 16.9$  whereas the extended tail toward smaller  $E$  for  $R = 380$  suggests approaches to the laminar state which, when sufficiently marked, lead to turbulence breakdown, so that the system is likely not far above the value below which decay can happen in a short time. The same tendency is observed in Fig. 8(c) for a larger domain,  $L = 76.2$ , but now a downward shift of the MPV of  $E$  is observed, which is best attributed to the existence and growth of the laminar fraction as  $R$  is decreased, a laminar fraction that will be more conspicuous at larger  $L$  as shown in Fig. 7. The PDF also displays a low-end tail for  $R = 360$  which again implies that turbulence breakdown can take place if one is patient enough in pursuing the simulation, and will do so more easily at a lower  $R$ . The last case is for  $L = 98.5$  in Fig. 8(d), showing cleaner parabolic shapes and a systematic shift in the MPV of  $E$ . Since  $R = 330$  is sufficiently above  $R_g = 325$ , the system is not at risk to decay and the PDF has no low- $E$  tail.



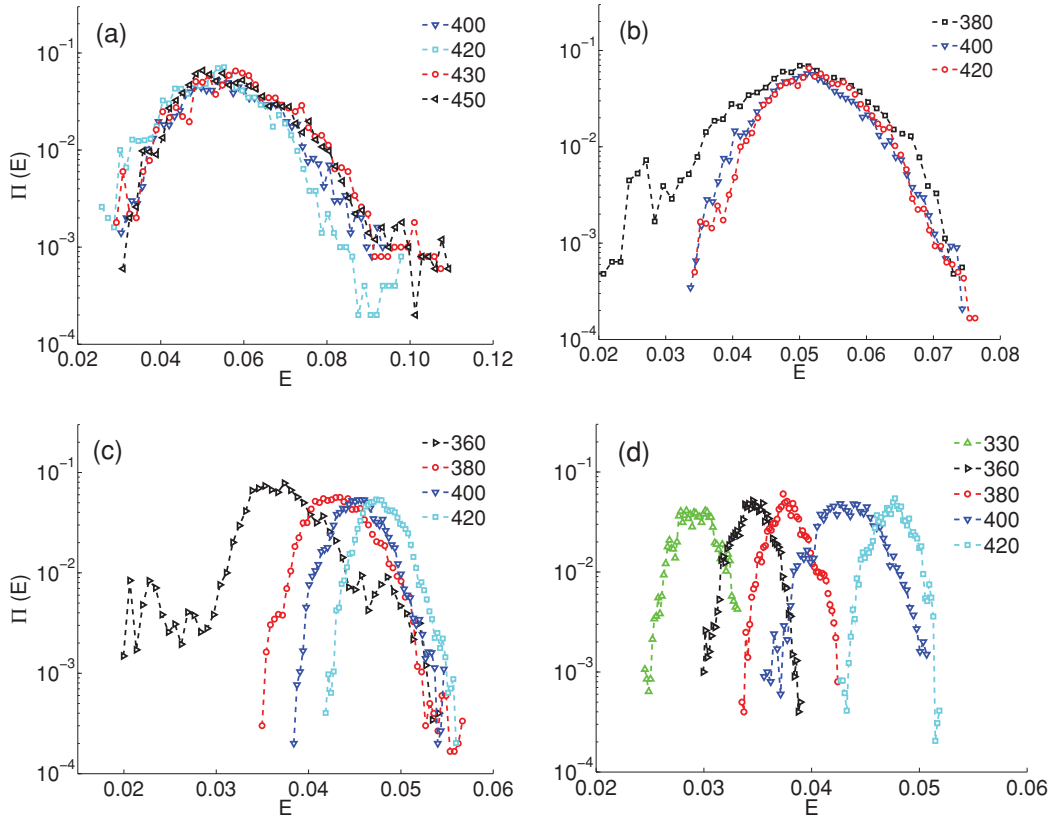


FIG. 8. (Color online) Probability distribution functions  $\Pi(E)$  as functions of  $E$  for different system sizes; values of  $R$  are indicated in the legends. (a)  $L = 16.9$ ; (b)  $L = 35.3$ ; (c)  $L = 76.2$ ; (d)  $L = 98.5$ . Notice the different scales for  $E$  on the horizontal axis.

From these curves, one main feature emerges: the position of the MPV may or may not be variable. Snapshots of the solutions show that the decrease of the MPV with  $R$  reflects the presence of a larger and larger region of the system which has returned to laminar flow, temporarily or persistently, and the PDFs tell us that the return is in a statistically significant way. We interpret this as the signature of the change in the dynamics from temporal to spatiotemporal and conclude that one can decide this issue blindly from the consideration of time series of  $E$  only. From the variation of the MPVs, one can locate the change for  $L$  around 76.2. A secondary feature is the presence or not of a low-end tail in the PDF of  $E$ , which is an indication of the robustness of the state considered. In the absence of a tail, the distribution is essentially Gaussian and the system is not at risk to decay at the given value of  $R$ . If an exponential tail is present, it means that the decay probability is small but significant, which means that if the experiment is long enough, the flow will decay.

Let us now consider the featureless turbulent regime at  $R = 420$  where the PDFs displayed in Fig. 8 are all nicely one-humped. A quantitative characterization of their shapes is obtained by fitting  $\ln \Pi(E)$  against a polynomial in the form  $aE^2 + bE + c$ . The width of the distribution can be defined from  $a$  as  $\sigma := |a|^{-1/2}$ . By eye, it can be seen in Fig. 8 that  $\sigma$  decreases as  $L$  increases, which can be understood as a consequence of averaging over wider domains. Assuming local random behavior at the scale of the MFU, one can view the system as an assembly of independent subsystems (which is of

course not the case but may serve as a template), in which case one expects the standard deviation of the fluctuations to vary as the inverse square root of their number, i.e., as the inverse of the square root of the system’s surface. Accordingly, in Fig. 9 we plot  $\sigma$  compensated by its presumed variation with the size, i.e.,  $\sigma \sqrt{L_x L_z}$  as a function of  $\sqrt{L_x L_z}$ . The fact that this quantity is indeed approximately constant supports the underlying assumption but, by virtue of contrast, also suggests that it will have to be reexamined when the pattern sets in as a result of the interaction between MFUs at lower  $R$ .

**C. Correlation lengths and the temporal-spatiotemporal issue**

In order to gain further insight into the temporal→spatiotemporal transition at a “microscopic”

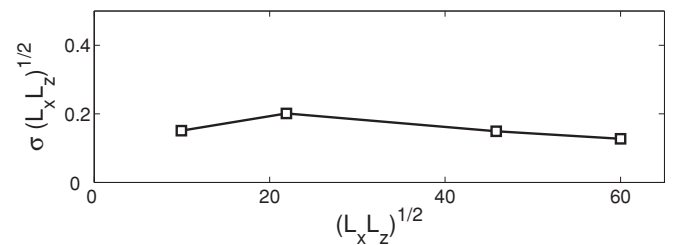


FIG. 9. Width  $\sigma$  of the PDFs of  $E$  compensated for the presumed extensive behavior of the featureless turbulent regime at  $R = 420$  for  $L = 16.9, 35.3, 76.2,$  and  $98.5$ , from data presented in Fig. 8.



level, we now study the changes in the correlation functions upon domain size variation. Here we focus on the streamwise perturbation velocity component obtained upon subtraction of the base flow profile,  $\tilde{u} = u - y$ . We consider the streamwise and spanwise time-averaged correlation functions in the mid-plane  $y = 0$  where the base flow is strictly zero. They are defined as

$$C_x := \frac{\langle \tilde{u}(\mathbf{x} + x\hat{\mathbf{x}}, t)\tilde{u}(\mathbf{x}, t) \rangle}{\langle \tilde{u}(\mathbf{x}, t)\tilde{u}(\mathbf{x}, t) \rangle}, \quad (4)$$

$$C_z := \frac{\langle \tilde{u}(\mathbf{x} + z\hat{\mathbf{z}}, t)\tilde{u}(\mathbf{x}, t) \rangle}{\langle \tilde{u}(\mathbf{x}, t)\tilde{u}(\mathbf{x}, t) \rangle},$$

where  $\mathbf{x}$  is the in-plane running point while  $\langle \rangle$  and the overbars denote averaging over space and time, respectively. Owing to the periodic boundary conditions in  $z$  and  $x$ , the correlation functions are periodic with periods  $L_x$  and  $L_z$ . Furthermore, symmetry considerations lead one to expect them to be symmetric with respect to the origin, which is approximately the case. Accordingly, we only display one-sided symmetry-averaged correlations profiles over  $[0, L_z/2]$  or  $[0, L_x/2]$  for the different domains that we have considered. They are presented for  $R = 410$  in Fig. 10 which shows  $C_z$  and  $C_x$ , in panels (a),(c) and (b),(d), respectively.

Due to the constraints caused by the boundary conditions, both  $C_z$  and  $C_x$  show that small domains are highly correlated. It should however be noticed that  $C_z$  passes zero even for the smallest domain, which is consistent with the presence of a pair of streaks (see Fig. 3). Information about processes at the scale of the streak, such as the regeneration mechanism of turbulence, can thus be studied in such domains. That the process depends much more on the velocity profile variation in  $z$  than in  $x$  can be understood from the high level of correlation along  $x$  [Fig. 10(b),  $L = 16.9$ ]. With increasing domain size  $L$ ,  $C_z$  oscillates with a period typical of the streaks. Oscillations seem to persist even at  $L = 143.1$ . On the other hand, the streamwise correlation function  $C_x$  decreases much more slowly and may reach zero, testifying to the very elongated character of these structures.

The above discussion shows that  $L = 76.2\text{--}87.3$  forms some kind of a boundary between the two distinct regions which exhibit temporal and spatiotemporal dynamics. This boundary will be further explored in Sec. III D below. It is suggested that only domains able to accommodate these naturally existing elongated streaks are those that will exhibit banded patterns at lower  $R$ . In this connection let us notice that, in their work, Barkley and Tuckerman were implicitly taking this feature into account by using their tilted domains since periodic conditions were correlating streaks that were

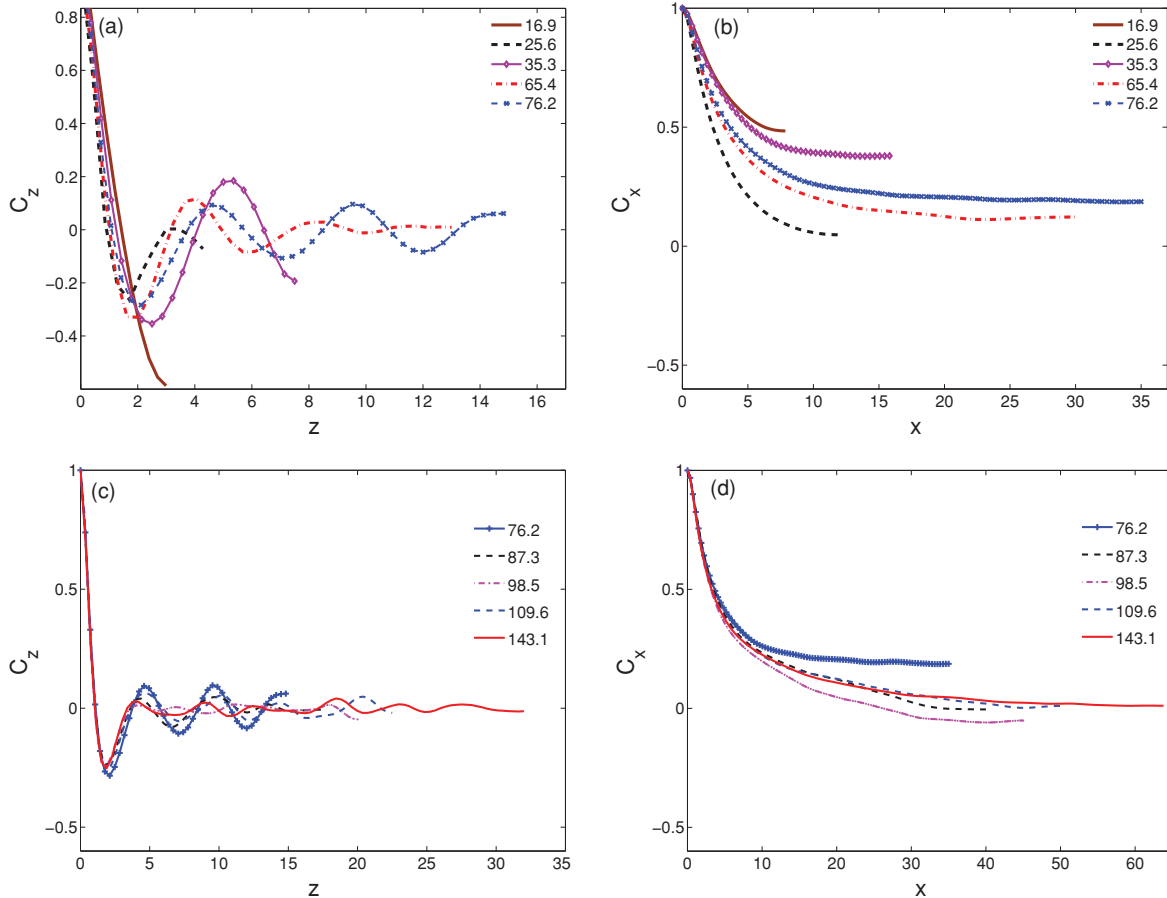


FIG. 10. (Color online) Time-averaged streamwise velocity correlations at  $R = 410$  for various domain sizes as indicated in the legends. (a),(c) Along the direction  $\hat{\mathbf{z}}$ . (b),(d) Along the streamwise direction  $\hat{\mathbf{x}}$ . Averaging over 1000 successive snapshots taken every  $\delta t = 1$  is performed.

shifted by one spanwise MFU width  $\lambda_z$  so that their streamwise amplitude could be modulated on a scale much longer than the period imposed by their pseudostreamwise conditions at  $L_x' = \lambda_z / \sin \theta$ , where  $\theta$  is the angle between their domain short direction and the  $x$  axis [12]. In the simulation corresponding to their Fig. 1, modulation took place over nine periods, corresponding to simulations in a periodic box of size  $L_x = 97$  and  $L_z = 43$  aligned with the flow. The limitation of their approach is that correlation in the spanwise direction is somewhat enhanced by the shift condition, which ends in patterns that look much more regular than those one obtains in boxes like our largest ones,  $L = 109$  ( $L_x = 100$ ,  $L_z = 45$ , close to their effective dimensions) or  $L = 143.1$  (see snapshots in Fig. 7).

**D. Bifurcation diagram of transition in plane Couette flow**

Bifurcation diagrams for PCF at different values of  $L$  are displayed in Fig. 11, left panel. In the right panel we show them unfolded according to the system size, i.e., in a  $R$ - $L$ - $D$  coordinate system, the presentation adopted for Fig. 2. The diagrams are all obtained following the same adiabatic protocol with  $\Delta R = 10$  and  $\Delta T = 10^3$ , starting from states prepared at  $R = 420$ , except for systems with  $L = 16.9$  and  $25.6$  which are started at  $R = 450$ . The distance  $D$  used to characterize the state of the system is  $U_{rms}$  averaged over the last 600 time units. In all cases, an abrupt transition from a sustained turbulent regime to laminar flow is observed as  $R$  is decreased. It should however be stressed that the exact quantitative position of the jump depends on the protocol:

(a) When  $L$  is small, the transition is probabilistic [21,37] but a single trajectory is followed. A better determination would necessitate the determination of PDFs of transient lifetimes and the value of  $R$  at which the mean lifetime is larger than some value beyond which the flow regime would be considered as sustained.

(b) At larger  $L$ , the relaxation of turbulence also has probabilistic features and choosing  $\Delta T$  too small may not

ensure us that the system has explored a sufficiently large part of its accessible phase space so that the result is still sensitive to the initial state at the value of  $R$  considered, which is the state at the end of the simulation at  $R + \Delta R$ . On the other hand, when  $\Delta R$  is too large, setting the system at  $R$  from  $R + \Delta R$  can be a large perturbation, which may place the initial condition outside the attraction basin of the turbulent state at the considered  $R$ , leading to an overestimation of the  $R$  corresponding to the jump in the bifurcation diagram for that  $L$ . This case corresponds to quench experiments in which the initial state is systematically taken to be fully turbulent [6]. The risk is more limited if  $\Delta R$  is small enough as in the adiabatic protocol that we are following.

We are confident that the decrease of the Reynolds number at which decay to laminar flow occurs seen in Fig. 11 as  $L$  increases is not an artifact of the protocol. This decrease in  $R$  means that, when  $L$  is increased, the flow needs to be forced less vigorously to remain turbulent because its effective phase space has enlarged so that it has more freedom to evolve nontrivially in a spatiotemporal manner, rather than strictly temporally when it is confined by the lateral boundary conditions at small distances. The increase in the region of nonlaminar flow with increasing domain size can also be inferred from the plot in Fig. 12 where colors from blue = zero to red show  $U_{rms}$  in increasing values. Also shown in this figure are black-and-white (BW) coded snapshots of the system for a series of sizes and Reynolds numbers. The corresponding cases are indicated by white dots in the left panel. These images are obtained by coarse-graining  $\|\tilde{v}\|^2$  from the final state of each simulation at the corresponding  $R$  in cells of size  $1 \times 1 \times 1$ , following a procedure described in [40]. The top ( $y \geq 0$ ) and bottom ( $y \leq 0$ ) cells are separately coarse grained to take the lateral shifts of the laminar-turbulent regions in both halves into account [2,34,40]. BW thresholding is then performed, a pixel being termed “turbulent” and B colored when the mean of the energy of the two corresponding stacked cells is larger than half the average energy in the whole system, “laminar” and W colored otherwise. This automated cutoff criterion has been

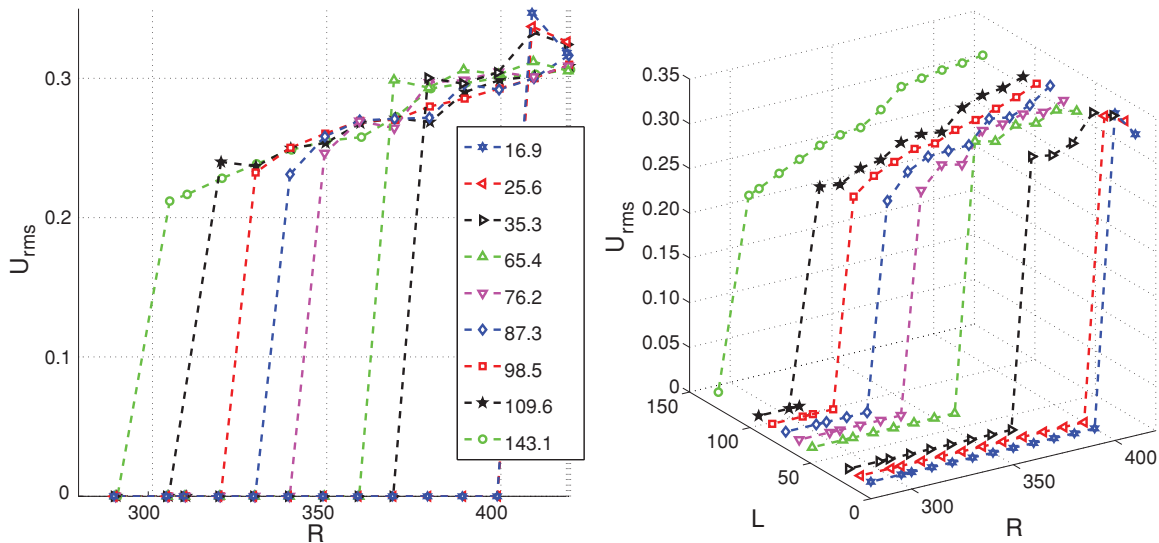


FIG. 11. (Color online) (a) Bifurcation diagrams in the  $R$ - $D$  plane for the different system sizes indicated in the legend, with  $D \equiv U_{rms}$ . (b) Three-dimensional unfolding of (a) according to system size  $L$ .

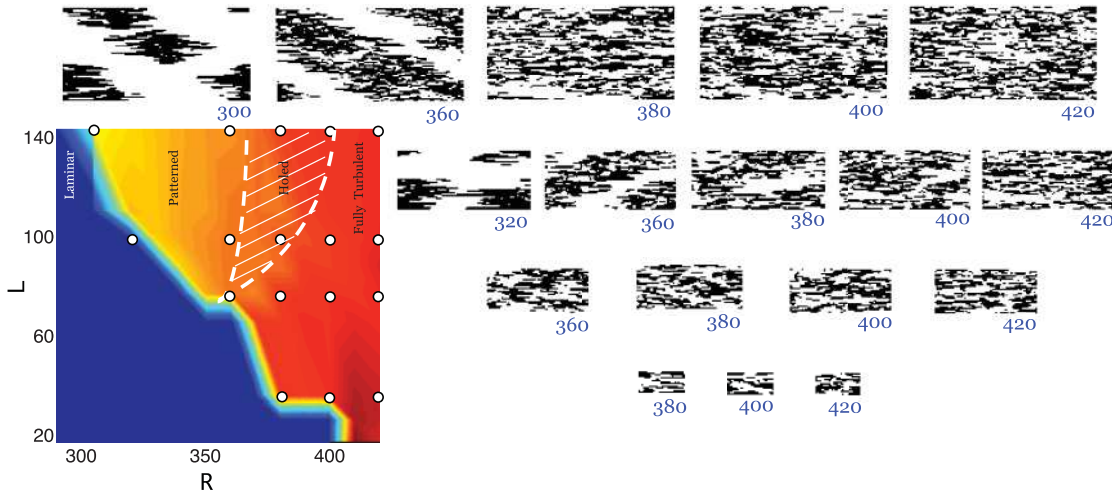


FIG. 12. (Color online) Left: Bifurcation diagram in the  $R$ - $L$  plane with color coded values of  $D \equiv U_{rms}$ ; red (rendered medium gray) corresponds to the largest value of  $D$  (turbulent at large  $L$ , chaotic at small  $L$ ); blue (rendered dark gray) is for laminar flow where  $D = 0$ ; patterns and rigged states have intermediate values of  $D$  from yellow to orange (rendered light to medium gray). Above and on the right: BW representation of turbulent-laminar patches for  $L = 143.1$  (top),  $98.5$ ,  $76.2$ , and  $35.3$  (bottom). Corresponding Reynolds numbers are indicated at the bottom right corner of each image. White dots in the left panel show the location of the states corresponding to the BW plots. Cases ( $L = 143.1, R = 300$ ) and ( $L = 98.5, R = 320$ ) are decaying and eventually become laminar.

found suitable across the whole ranges of  $R$  and domain sizes studied, yielding pictures visually similar to their  $y$ -averaged, non-coarse-grained counterparts.

The observation of the bifurcation diagrams in Fig. 11 (left) does not lend itself to clear differentiation of the regions where well-oriented patterns occur and where they do not, though for domains  $L = 65.4$  and smaller,  $U_{rms}$  is seen not to vary much before decay, whereas in larger domains a gradual change is observed. However, the BW energy plots in Fig. 12, e.g., ( $L = 143.1, R = 400$ ) or ( $L = 98.5, R = 380$ ), show that apart from the patterned region, there exists a parameter region where the surface of the system is “moth eaten” or “riddled” with fluctuating laminar troughs. This can also be realized from the changing magnitude of  $U_{rms}$  in the color plot if its slow decrease with  $R$  is attributed to a concomitant increase of the laminar fraction. The hatched domain limited by a white dashed line in the left part of Fig. 12 roughly indicates the presence of these riddled states. This particular regime thus appears as a precursor to the banded regime when the patterns are approached by increasing  $L$  or decreasing  $R$ , situated in the bifurcation diagram like the intermittent regime described by Prigent *et al.* [4] and Barkley and Tuckerman [12] and to which it corresponds closely. A possible equivalent of it in pipe flow seems to be the intermittent laminar-flash regime described in [17] near the transition to uniform turbulence that we call featureless. In our numerical configuration, the bifurcation diagram reaches its eventual large-aspect-ratio limit “featureless-riddled-banded-laminar” for systems of sizes beyond  $L = 76.2$ .

Further visualization in Fig. 13 shows systems with  $L \geq 76.2$  where one can visually observe the tendency to form a well-organized pattern as  $L$  is increased. Below this domain size, i.e.,  $L \leq 65.4$ , no pattern or troughs could be observed upon reducing  $R$  down to the final laminar state. Accordingly, patterns seems to need systems larger than some minimal size

to exist. However, this size should rather be considered to mark some crossover than to be “critical” in the usual sense because there cannot be any decisive criterion to decide whether one has more or fewer oblique, elongated, laminar troughs as for  $L = 76.2$ , or already well-formed bands, as for  $L = 87.3$ . As noted above, these laminar troughs are also found in very large domains at higher  $R$  and are precursors to the bands when, at given  $L$ ,  $R$  is reduced adiabatically from well above  $R_l$ . In fact, from the plots in Fig. 11 (left), one can see that  $R = 350$  is close to the transition to laminar flow for  $L = 76.2$  and  $87.3$ , and hence at the corner of the white hatched region in Fig. 12. Systems in the crossover region thus go from turbulent to laminar by skipping the patterned stage but still going through the intermittent-riddled regime.

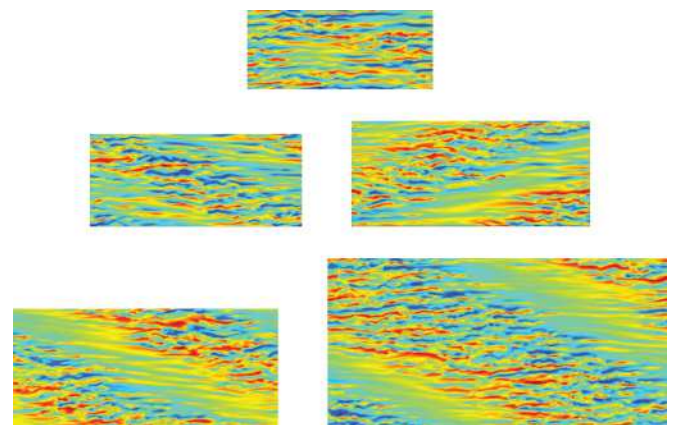


FIG. 13. (Color online) Streamwise velocity fluctuation  $u$  in the plane  $y = 0$  for different domains at  $R = 350$ :  $L = 76.2$ , ( $\theta = 23.2^\circ$ , top),  $87.3$  ( $\theta = 23.6^\circ$ , center left),  $98.5$  ( $\theta = 24.0^\circ$ , center right),  $109.6$  ( $\theta = 24.2^\circ$ , bottom left), and  $143.1$  ( $\theta = 26.6^\circ$ , bottom right).

#### IV. SUMMARY AND CONCLUSIONS

The formation of banded patterns in flows such as plane Couette flow, circular Couette flow, and plane Poiseuille flow is typically a spatiotemporal problem. And true enough, this phenomenon has been experimentally observed in domains with lateral dimensions that are more than two orders of magnitude larger than the wall-normal distance. Numerical simulations of the flow field in these large systems have become possible only recently, thanks to the less stringent resolution requirements to resolve all the scales of low- $R$  turbulent flow and to our ever-increasing computational capabilities. Despite these favorable circumstances, simulations cannot be performed over long enough durations to give definite answers about the statistics of the transitional regime in the large-aspect-ratio limit. Previously, with fully developed wall-bounded turbulence in mind (high  $R$ ), numerical computations and theory were more focused on small domains. In the moderate- $R$  range of interest to the problem of transition, these small systems are best analyzed within the framework of finite-dimensional dynamical systems theory. The present work stays in between these two types of studies, wherein we start with low- $R$  turbulence in small domains where temporal dynamics takes place, and increase the domain size gradually to reach the spatiotemporal regime. An adiabatic decrease of  $R$  for each domain then gives information about the different regimes visited by the system from featureless turbulence to laminar flow.

Upon decreasing  $R$ , starting from a featureless fully turbulent flow, we have obtained the result that, in small systems, the mean value of the perturbation energy remains roughly constant as a function of  $R$  down to the point where the chaotic regime breaks down into laminar flow, whereas it is regularly decreasing in larger systems. Furthermore, visualization of the flow field indicates that the mean energy variation corresponds to the system entering a spatiotemporal regime that at first (high  $R$ ) presents fluctuating laminar troughs and later (low  $R$ ) steady oblique patterns of bands alternately laminar and turbulent, but absent in the small systems in which spatial coherence implies a mostly temporal dynamics.

In the featureless regime, fluctuations of the mean perturbation energy have distribution probabilities with a single marked hump around the mean for all domain sizes. Their variance decreases with increasing system size, and fluctuations in the widest domains are close to normal, which can be understood as a result of the additivity of local (MFU scale) fluctuations that remain little correlated as long as the system is sufficiently far from laminar breakdown, expressing the extensive character of the featureless regime.

A study of the spanwise and streamwise dependence of the streamwise velocity component correlation function as functions of the system size has also been performed. The spanwise variation accounts for the self-sustaining process by displaying a periodic dependence at the scale expected for the streaks. More importantly, the slow streamwise variation expresses correlations reinforced by the periodic boundary conditions in the smallest systems. The ability

to take into account this streamwise dependence properly seems an important ingredient in order to explain the absence of patterning noticed in these systems. Indirectly, this also explains the observation of the pattern in the Barkley-Tuckerman tilted but short domains, since their domain width was chosen to fulfill a commensurability condition ensuring the periodic continuation of streaks at the tilt angle observed in the experiments, thus mimicking longer domains in the streamwise direction. In our computations, patterns were found for  $L > 76.2$ , i.e.,  $L_x > 70$ .

Inspection of flow fields (e.g., Fig. 13 or the BW insets in Fig. 12) indicates that, in accordance with the information gained from correlation functions, one can only observe intermittent laminar troughs for  $L = 76.2$ , and see any organized pattern of laminar-turbulent oblique bands only for  $L = 87.3$  and beyond.

In Fig. 2, a conjecture was presented about the bifurcation diagram of PCF, connecting systems of MFU size exhibiting temporal dynamics [37] to large-aspect-ratio systems displaying spatiotemporal dynamics and patterns [4]. Substantiating this conjecture at a quantitative level, Figs. 11 and 12 display the bifurcation diagrams obtained for various system sizes. The smallest domains follow the direct route chaotic flow  $\rightarrow$  laminar flow (via chaotic transients), whereas in very large domains one has turbulent flow  $\rightarrow$  riddled regime  $\rightarrow$  oblique pattern  $\rightarrow$  laminar flow. For  $L$  in the range 75–85 the oblique pattern stage is skipped, which marks the crossover from temporal to spatiotemporal dynamics. Furthermore, the threshold at which the pattern decays,  $R_g$ , is shown to decrease with increasing system size, seemingly tending to a constant in the large-aspect-ratio limit. A precise quantitative estimate of this limit was, however, outside the scope of this paper since the final turbulence breakdown still keeps probabilistic features that require statistics (longer time series, large number of independent realizations), especially in regard to the occurrence of turbulent patches issued from the fragmented bands and next turned into turbulent spots closer to  $R_g$ . At any rate the exact value is of little interest, all the more that periodic boundary conditions tend to stabilize the pattern, which thus artificially decreases  $R_g$  at moderate aspect ratios. The observed trends (decrease of  $R_g$  as  $L$  is increased, shrinking of the band regime to the benefit of the intermittent riddled regime), however, go in the same direction as the experimental findings, showing that at intermediate aspect ratio, the transitional range is pushed to higher  $R$  and that patterns can hardly be observed—see [10] and [7, Sec. 4.4]—though no quantitative link can be made in view of the differences in the lateral boundary conditions.

All in all, the recognition of a crossover size beyond which the transition to or from turbulence in PCF is undoubtedly a spatiotemporal process, and the need for a faithful account of streamwise correlations at this scale, either directly or indirectly via the tilted-domain trick, seem our most important observations. They might help us to unravel the physical mechanism behind the organization of low- $R$  turbulence in wall-bounded flows, which still largely remains an enigma.



- [1] D. Coles, *J. Fluid Mech.* **21**, 385 (1965).
- [2] D. Coles and C. Van Atta, *AIAA J.* **4**, 1969 (1966).
- [3] C. Andereck, S. Liu, and H. Swinney, *J. Fluid Mech.* **164**, 155 (1986).
- [4] A. Prigent, G. Grégoire, H. Chaté, and O. Dauchot, *Physica D* **174**, 100 (2003).
- [5] P. Manneville, *Theor. Comput. Fluid Dyn.* **18**, 169 (2004).
- [6] S. Bottin, F. Daviaud, P. Manneville, and O. Dauchot, *Europhys. Lett.* **43**, 171 (1998).
- [7] S. Bottin, Ph.D. thesis, Université Paris 11 Orsay, 1998, [[tel.archives-ouvertes.fr/tel-00001111/en/](http://tel.archives-ouvertes.fr/tel-00001111/en/)].
- [8] F. Waleffe, *Phys. Fluids* **15**, 1517 (2003).
- [9] P. Manneville, *Instabilities, Chaos and Turbulence*, 2nd ed. (Imperial College Press, London, 2010).
- [10] N. Tillmark and H. Alfredsson, *J. Fluid Mech.* **235**, 89 (1992).
- [11] A. Prigent, Ph.D. thesis, Université Paris 11 Orsay, 2001, [[tel.archives-ouvertes.fr/tel-00261190/en/](http://tel.archives-ouvertes.fr/tel-00261190/en/)].
- [12] D. Barkley and L. S. Tuckerman, *Phys. Rev. Lett.* **94**, 014502 (2005).
- [13] Y. Duguet, P. Schlatter, and D. S. Henningson, *J. Fluid Mech.* **650**, 119 (2010).
- [14] A. Meseguer, F. Mellibovsky, M. Avila, and F. Marques, *Phys. Rev. E* **80**, 046315 (2009).
- [15] S. Dong, *Phys. Rev. E* **80**, 067301 (2009).
- [16] T. Tsukahara, Y. Seki, H. Kawamura, and D. Tochio, in *Turbulence and Shear Flow Phenomena 4*, edited by J.A.C. Humphrey *et al.* (Williamsburg, 2005), p. 935.
- [17] D. Moxey and D. Barkley, *Proc. Natl. Acad. Sci. USA* **107**, 8091 (2010).
- [18] J. Jimenez and P. Moin, *J. Fluid Mech.* **225**, 213 (1991).
- [19] J. M. Hamilton, J. Kim, and F. Waleffe, *J. Fluid Mech.* **287**, 317 (1995).
- [20] M. Nagata, *J. Fluid Mech.* **217**, 519 (1990).
- [21] B. Eckhardt, H. Faisst, A. Schmiegel, and T. M. Schneider, *Philos. Trans. R. Soc. London, Ser. A* **366**, 1297 (2008).
- [22] J. F. Gibson, J. Halcrow, and P. Cvitanovic, *J. Fluid Mech.* **611**, 107 (2008).
- [23] Y. Duguet, P. Schlatter, and D. S. Henningson, *Phys. Fluids* **21**, 111701 (2009).
- [24] T. M. Schneider, D. Marinc, and B. Eckhardt, *J. Fluid Mech.* **646**, 441 (2010).
- [25] J. Burke and E. Knobloch, *Chaos* **17**, 037102 (2007).
- [26] T. M. Schneider, J. F. Gibson, and J. Burke, *Phys. Rev. Lett.* **104**, 104501 (2010).
- [27] M. Cross and P. Hohenberg, *Rev. Mod. Phys.* **65**, 851 (1993).
- [28] D. Barkley, L. S. Tuckerman, and O. Dauchot, *J. Phys.: Conf. Ser.* **137**, 012029 (2008).
- [29] M. Lagha and P. Manneville, *Eur. Phys. J. B* **58**, 433 (2007).
- [30] P. Manneville, *Phys. Rev. E* **79**, 025301 (2009); **79**, 039904 (2009).
- [31] P. Manneville and J. Rolland, *Theor. Comput. Fluid Dyn.* doi:10.1007/s00162-010-0215-5 (2010).
- [32] E. Ott, *Scholarpedia* **1**, 1700 (2006).
- [33] J. Gibson, computer code CHANNELFLOW, a spectral Navier-Stokes simulator in C++ (2010), [[www.channelflow.org](http://www.channelflow.org)].
- [34] D. Barkley and L. S. Tuckerman, *J. Fluid Mech.* **576**, 109 (2007).
- [35] J. Komminaho, A. Lundbladh, and A. Johansson, *J. Fluid Mech.* **320**, 259 (1996).
- [36] A. Schmiegel and B. Eckhardt, *Europhys. Lett.* **51**, 395 (2000).
- [37] T. M. Schneider, F. DeLillo, J. Buehrle, B. Eckhardt, T. Dörnemann, K. Dörnemann, and B. Freisleben, *Phys. Rev. E* **81**, 015301(R) (2010).
- [38] A. Lundbladh and A. V. Johansson, *J. Fluid Mech.* **229**, 409 (1991).
- [39] P. Manneville (unpublished).
- [40] J. Rolland and P. Manneville (unpublished).