



HAL
open science

Rare event simulation related to financial risks: efficient estimation and sensitivity analysis

Ankush Agarwal, Stefano de Marco, Emmanuel Gobet, Gang Liu

► To cite this version:

Ankush Agarwal, Stefano de Marco, Emmanuel Gobet, Gang Liu. Rare event simulation related to financial risks: efficient estimation and sensitivity analysis. 2015. hal-01219616v1

HAL Id: hal-01219616

<https://polytechnique.hal.science/hal-01219616v1>

Preprint submitted on 22 Oct 2015 (v1), last revised 28 Dec 2017 (v2)

HAL is a multi-disciplinary open access archive for the deposit and dissemination of scientific research documents, whether they are published or not. The documents may come from teaching and research institutions in France or abroad, or from public or private research centers.

L'archive ouverte pluridisciplinaire **HAL**, est destinée au dépôt et à la diffusion de documents scientifiques de niveau recherche, publiés ou non, émanant des établissements d'enseignement et de recherche français ou étrangers, des laboratoires publics ou privés.

Rare event simulation related to financial risks: efficient estimation and sensitivity analysis

Ankush Agarwal*

Stefano De Marco[†]

Emmanuel Gobet[‡]

Gang Liu[§]

Centre de Mathématiques Appliquées (CMAP)
Ecole Polytechnique, CNRS
Université Paris-Saclay
Route de Saclay, 91128 Palaiseau Cedex, France.

This version: October 21st, 2015

Abstract

In this paper, we develop the reversible shaking transformation methods on path space of Gobet and Liu [GL15] to estimate the rare event statistics arising in different financial risk settings which are embedded within a unified framework of isonormal Gaussian process. Namely, we combine splitting methods with both Interacting Particle System (IPS) technique and ergodic transformations using Parallel-One-Path (POP) estimators. We also propose an adaptive version for the POP method and prove its convergence. We demonstrate the application of our methods in various examples which cover usual semi-martingale stochastic models (not necessarily Markovian) driven by Brownian motion and, also, models driven by fractional Brownian motion (non semi-martingale) to address various financial risks. Interestingly, owing to the Gaussian process framework, our methods are also able to efficiently handle the important problem of sensitivities of rare event statistics with respect to the model parameters.

Key words: Rare event, Monte Carlo simulation, Markov chains, ergodic properties, interacting particle systems, Malliavin calculus, sensitivity analysis, fractional Brownian motion, credit default swaps, model misspecification, deep out-of-the-money options

AMS subject classifications (2010): 65C05, 60G15, 65C40, 65C35, 60H07

1 Introduction

Context and applications. During the last thirty years, financial crises and shocks have repeatedly occurred, ranging from the Black Monday in 1987 to the recent Chinese stock market crash in 2015, passing through the financial crisis of 2007-2008 triggered by over-valuated subprime mortgages. As a consequence, banks, insurance companies and regulators are paying more and more attention to the quantification of risk in all its forms (market risk, credit risk, operational risk) and to its management, in particular in the tails and extremes. In the 90's, the value at risk (VaR) appeared as a unanimous choice of metric to measure the risk in the tails at a given probability (typically 95%) and has been promoted by the Basel committee. Then, convex risk measures, like Expected Shortfall, have emerged to better account for the severity of potential losses and not only for their frequency. Increasingly, attention has

*Email: ankush.agarwal@polytechnique.edu. The author research is part of the Chair *Financial Risks* of the *Risk Foundation*.

[†]Email: stefano.demarco@polytechnique.edu. The author research is part of the Chair *Financial Risks* of the *Risk Foundation*.

[‡]Email: emmanuel.gobet@polytechnique.edu. The author research is part of the Chair *Financial Risks* of the *Risk Foundation* and the *Finance for Energy Market Research Centre*.

[§]Email: gang.liu1988@gmail.com. The author research is part of the Chair *Financial Risks* of the *Risk Foundation*.

also been paid to stress tests which are extreme scenarios used to evaluate the resilience of individual banks or entire banking system in case of pre-specified unlikely events. This justifies the recent increased interest in analysis of extreme events in finance.

More precisely, rare event analysis usually comes into play in different areas of finance and risk management. Far from being exhaustive, we discuss a few examples that, in our opinion, are of primary importance and that are diverse enough to cover a wide range of possible situations. For instance, the market risk is mandatorily evaluated using the VaR or Expected Shortfall. Another relevant issue is model risk [Con06], i.e. the impact of using a misspecified model for hedging financial positions. We consider such a problem related to model robustness in Subsection 4.1 following the analysis of [EJS98, CM01]. Regarding credit risk, a typical problem is to estimate certain default probabilities required for pricing Credit Default Swaps. Such an example inspired from [CFV09, CC10] is considered in Subsection 4.2. Models based on fractional fields are now popular in physics, natural sciences, economics among the many fields (see [CI13]) and are also used in financial modeling (see [CR98]). In the recent work [GJR14], the authors model the volatility of S&P 500 index by fractional Brownian motion (fBM). In Subsection 4.3, to demonstrate the application of our method in the case of fBM based stochastic models, we consider the problem of estimating far-from-the-money implied volatilities (IV) of an underlying process following fSABR model [GJ14], and then discuss the impact of parameters in view of calibration issues using the tails of IV. Another example of market risk comes from the evaluation of deep out-of-the-money options. We devote Subsection 4.4 to this case by considering options written on a portfolio of assets and estimate sensitivities with respect to different portfolio and model parameters. For other results and approximations related to deep out-of-the-money options, see for instance [GT13, FGG+15]. Some numerical tests on these examples have been previously performed in the literature and we refer to them in our description. In all the above examples, crude Monte-Carlo simulations naturally fail to be efficient since the events of interest have small probabilities. Thus, specific numerical methods are needed. Actually, to allow more challenging issues, we consider rather extreme cases, i.e. associated to probabilities smaller than 10^{-4} .

Gaussian Hilbert space modeling. An important observation is that financial models are often built on Gaussian noise to account for market risk and other financial risks. Some examples include models based on finite dimensional Gaussian variables, standard or fractional Brownian motion, multi-dimensional Brownian Stochastic Differential Equations (SDE) and so on. In order to provide a unified treatment, we embed our study in the framework of a general isonormal Gaussian process where the random process is $X := (X(h) : h \in \mathcal{H})$ in association to a real separable Hilbert space \mathcal{H} (see Subsection 2.1 for a precise description). This setting is also referred as Gaussian Hilbert space. As explained later, such a framework has several advantages, in particular, we are able to leverage reversible shakers and establish convergence results for the subsequent algorithms. Also, the sensitivity analysis can be handled nicely using Malliavin calculus (Subsection 2.4).

Background results on rare event simulations. To sample extreme scenarios in order to compute statistics of a rare event, several numerical methods have been developed.

Among them, the Importance Sampling (IS) technique [RK08] transforms the distribution of random variables to be simulated in order to make the event not rare anymore (or less rare). However, it is known that the method relies heavily on the particularity of the model to obtain a feasible transformation. For example, IS technique has been designed by [GHS00] for computing the 10 days-VaR of a portfolio of options using small-time linearization in the context of lognormal models. See also the recent work by [GT13] for IS transformation to price deep out-of-the-money basket options in lognormal models.

Another approach is based on Interacting Particle System (IPS) (see for instance [Del04, DG05, CDLL06]). Usually, it is designed when the rare event is related to the terminal value of a discrete-time Markov chain in \mathbb{R}^d . In this approach, a large number of particles representing the underlying state evolve with interactions at every time step till the terminal time where the rare event statistics are evaluated using Feynman-Kac formulas and are computed on the empirical measure associated to these particles. This approach requires to embed the rare event problem into a Markovian setting, which causes some difficulties, for instance, when the model is not Markovian. The statistical errors increase as the number of time steps gets larger, which makes the efficiency of the method questionable. For related numerical experiments, see [CFV09, CC10]. Recently in [GL15], the IPS method has been revisited using another point of view by designing a Markov chain taking values in a path space, for instance the set of continuous functions from \mathbb{R}^+ to \mathbb{R}^q , using reversible transformations

(also called *shakers*). This approach turns out to be more suitable and natural for problems involving stochastic processes. In this work, we follow this point of view but directly at the level of the isonormal Gaussian path $X = (X(h) : h \in \mathcal{H})$.

Lastly, the splitting techniques initiated in [VV91] decompose the problem of rare event in a sequence of n increasingly rare events (n is of the order of the log-probability of the rare event, thus it is often smaller than 10). Usually, a particle-based approach (similar to IPS) is used to implement the method. In [GL15], the authors use tools from ergodic theory to compute each conditional expectation (from one set to the next one) by taking advantage, again, of the reversible shakers. It leads to the Parallel One-Path (POP) method since each statistic is computed in parallel using a single particle evolving over a long path. The required memory is much smaller than using a full particle system and the standard deviation appears to be often smaller than IPS. The current work is elaborated in this direction.

Sensitivity analysis of rare events. Another issue which is not often addressed in the rare event literature is the analysis of sensitivities of rare event statistics with respect to (w.r.t.) model parameters. We believe that this is an important issue especially because the rare events statistics are known to be strongly dependent on the model parameters (see the limit (2.14)). Moreover, if the parameters are estimated from the observed data, they typically constitute some error, thus, relating the sensitivity analysis to the concept of model risk. To the best of our knowledge, there are very few contributions on this subject in the rare event setting. We refer to [AR99] where such study is handled in the case of compound Poisson process using the score function method coupled with the IS method. Our aim here is to extend the IPS and POP methods to encompass sensitivity analysis. As we consider Gaussian based models, for the sensitivity analysis we rely on the machinery of Malliavin calculus to derive elegant representations of derivatives of expectations of general Gaussian functionals (see e.g. [FLL+99, Gob04, GM05, KY09]). We argue that this approach suits the POP algorithm based on path configuration since there is no need to Markovianize the sensitivity weights. The details are given in Subsection 2.4. We note that in order to derive these results, we do not need any semimartingale models and Itô calculus framework.

Outline of the work. The paper is organized as follows. We define the generic isonormal Gaussian model under study in Section 2. We define shakers and prove their related convergence properties in Subsection 2.2. A brief reminder on IPS and POP algorithms is provided in Subsection 2.3 and accounting for sensitivity analysis is performed in Subsection 2.4. In Section 3, complementary convergence and consistency results for adaptive POP method are studied. Section 4 is devoted to applications and experiments in various financial risk problems, namely: model misspecification risk, default probabilities in credit portfolios, estimation of small strike asymptotics in fractional Brownian motion models and parameter sensitivity estimation for deep out-of-the money options. We conclude by summarizing our contributions in Section 5.

2 Generic model, reversible Gaussian transformation and related rare event algorithms

2.1 Isonormal Gaussian process and rare event modeling

We adopt the framework in [Nua06] of an isonormal Gaussian process associated with a general Hilbert space \mathcal{H} (a.k.a. the framework of Gaussian Hilbert spaces, see [Jan97]). Namely, we assume that \mathcal{H} is a real separable Hilbert space with scalar product $\langle \cdot, \cdot \rangle_{\mathcal{H}}$ and we consider the probability space $(\Omega, \mathcal{F}, \mathbb{P})$ such that the stochastic process $X = (X(h) : h \in \mathcal{H})$ is a centered Gaussian family of scalar random variables with

$$\mathbb{E}[X(h)X(g)] = \langle h, g \rangle_{\mathcal{H}} \quad \text{for any } h, g \in \mathcal{H}.$$

We may refer to X as a path indexed by $h \in \mathcal{H}$. The norm of an element $h \in \mathcal{H}$ is denoted by $\|h\|_{\mathcal{H}}$. The mapping $h \mapsto X(h)$ is linear. Some important examples are as following:

Example 1 (Finite dimensional Gaussian space). *Let $q \in \mathbb{N}^*$, set $\mathcal{H} := \mathbb{R}^q$ and $\langle h, g \rangle_{\mathcal{H}} := \sum_{j=1}^q h_j g_j$ for any $h, g \in \mathbb{R}^q$, denote by $e^i = (\mathbf{1}_{\{j=i\}} : 1 \leq j \leq q)$ the i -th element of the canonical basis of \mathbb{R}^q . Then $(X(e^1), \dots, X(e^q))$ is a vector with independent standard Gaussian components.*

Example 2 (Multidimensional Brownian motion (BM)). Let $q \in \mathbb{N}^*$, denote by \mathcal{H} the \mathbf{L}_2 -space $\mathcal{H} := \mathbf{L}_2(\mathbb{R}^+ \times \{1, \dots, q\}, \mu)$, where the measure μ is the product of the Lebesgue measure times the uniform measure which gives mass one to each point $1, \dots, q$, and set

$$\langle h, g \rangle_{\mathcal{H}} := \int_{\mathbb{R}^+ \times \{1, \dots, q\}} h(x)g(x)\mu(dx) \quad \text{for any } h, g \in \mathcal{H}.$$

Define

$$X_t^i := X(\mathbf{1}_{[0,t] \times \{i\}}) \quad \text{for any } t \geq 0, \quad 1 \leq i \leq q.$$

Then the process $(X_t^1, \dots, X_t^q : t \geq 0)$ is a standard q -dimensional Brownian motion.

Example 3 (Fractional Brownian motion (fBM)). The fBM with Hurst exponent $H \in (0, 1)$ is a \mathbb{R} -valued Gaussian process, centered with covariance function

$$\mathbb{E}(X_t^{(H)} X_s^{(H)}) = \frac{1}{2} (t^{2H} + s^{2H} - |t - s|^{2H}) := R_H(t, s), \quad \text{for any } s, t \geq 0.$$

For any fixed $T > 0$, $(X_t^{(H)} : 0 \leq t \leq T)$ can also be defined within our framework (see [Nua06, Chapter V]). Denote by \mathcal{H}^0 the set of step functions on $[0, T]$, and let \mathcal{H} be the Hilbert space defined as the closure of \mathcal{H}^0 w.r.t. the scalar product $\langle \mathbf{1}_{[0,t]}, \mathbf{1}_{[0,s]} \rangle_{\mathcal{H}} = R_H(t, s)$. Denote by X the Gaussian process on \mathcal{H} and $(X(\mathbf{1}_{[0,t]})) : 0 \leq t \leq T$ defines a fBm $(X_t^{(H)} : 0 \leq t \leq T)$ with Hurst exponent H .

Of course, we can mix these examples by defining for instance simultaneously standard BM and fBM. On top of this Gaussian model on \mathcal{H} , we can define more sophisticated models frequently used in finance for modeling risk. For the sake of convenience of the reader, here we mention two of them and refer to Section 4 for further developments.

- Local volatility models [Dup94]:

$$dS_t = b(t, S_t)dt + \sigma(t, S_t)dX_t$$

where X is a standard q -dimensional BM and S stands for the price process of d tradable assets.

- Fractional Brownian Motion (fBM) volatility models [CR98, GJR14]:

$$dS_t = \mu_t S_t dt + \sigma_t S_t dW_t$$

where S stands for the price and the random volatility σ_t is defined through a fractional Brownian Motion. To have mean-reverting volatility, we may model σ as a fractional Ornstein-Uhlenbeck process, see [CKM03, GVZ15]. In Subsection 4.3, we rather consider the fractional SABR model of [GJ14] where the volatility takes the form

$$\sigma_t = \bar{\sigma} \exp\left(-\frac{1}{2}\alpha^2 t^{2H} + \alpha X_t^{(H)}\right), \quad t \in [0, T]$$

where $\bar{\sigma}$ and α are positive parameters, and $X^{(H)}$ as in Example 3.

From now on, we assume that the probability space at hand $(\Omega, \mathcal{F}, \mathbb{P})$ is such that the σ -field \mathcal{F} is generated by $\{X(h) : h \in \mathcal{H}\}$ and for notational simplification, we often identify \mathcal{H} with its orthonormal basis $\mathfrak{b}\mathcal{H} = (\bar{h}_1, \bar{h}_2, \dots)$. To allow rather great generality, we assume that the rare event is defined through two components, some Rare-event Explanatory Variables (REV) and a level-set function, which are parametrized as follows:

- We consider a random variable taking values in a general metric space $(\mathbf{Z}, \mathcal{Z})$, i.e.

$$Z : \omega \in (\Omega, \mathcal{F}) \mapsto Z(\omega) := \Psi_Z(X(\omega)) \in (\mathbf{Z}, \mathcal{Z}) \quad (2.1)$$

where Ψ_Z is a measurable mapping from $\mathbb{R}^{\mathcal{H}}$ to \mathbf{Z} . The random variable Z stands for the REV whose aim is to model the stochasticity of the rare-event.

- The above REV will be evaluated along a level-set function φ , which completes the definition of the rare event:

$$\varphi : (z, a) \in \mathbf{Z} \times (-\infty, +\infty] \mapsto \varphi(z, a) \in [-\infty, +\infty).$$

As we will see, non-positive values of $\varphi(z, a)$ correspond to rare-event scenarios whose probabilities we aim to compute. Furthermore, we assume that for any a , $\varphi(\cdot, a)$ is a measurable map in the first component and that $\varphi(\cdot)$ is non-increasing w.r.t. the second variable, i.e.

$$\varphi(z, a) \geq \varphi(z, a') \text{ for any } -\infty < a \leq a' \leq +\infty \text{ and any } z \in \mathbf{Z}. \quad (2.2)$$

We take the convention $\varphi(z, +\infty) = -\infty$ for any $z \in \mathbf{Z}$. The property (2.2) is crucial for the splitting approach in order to define nested subsets of increasingly rare scenarios (see Equation (2.5) later).

- c) The rare event under study is described by the critical paths of Z in set A of the form

$$A := \{z \in \mathbf{Z} : \varphi(z, \bar{a}) \leq 0\}$$

for a given level parameter $\bar{a} \in \mathbb{R}$ such that the probability $\mathbb{P}(Z \in A)$ is small. To avoid a degenerate problem, we assume from now on that $\mathbb{P}(Z \in A) > 0$.

- d) There is an integrable random variable $\Phi : \Omega \mapsto \mathbb{R}$ modeling the output, for which we wish to evaluate the statistics restricted to the event $\{Z \in A\}$, i.e. to compute

$$\mathbb{E}[\Phi \mathbf{1}_{Z \in A}]. \quad (2.3)$$

Our approach is based on the principle of splitting A in a sequence of $n \geq 2$ nested subsets $(A_k)_{k=1}^n$. Consider level parameters $\bar{a} := a_n < \dots < a_k < \dots < a_0 := +\infty$ and set

$$A_k := \{z \in \mathbf{Z} : \varphi(z, a_k) \leq 0\} \quad (2.4)$$

so that, owing to (2.2) we have

$$A := A_n \subset \dots \subset A_k \subset \dots \subset A_0 := \mathbf{Z}. \quad (2.5)$$

Note that for describing a given rare-event A , there are many possible couples (level set function φ , level set parameter \bar{a}). The choice made by the user has an impact on the performance of the methods (see the example on credit-risk in Subsection 4.2). This choice should be made according to the knowledge of the model at hand. Later, we will often refer to $(a_k)_{k=1}^n$ as acceptance level parameters, this terminology is justified by the subsequent Monte-Carlo schemes of Subsection 2.3. The choice of acceptance levels is discussed later and can be done adaptively (see Subsection 3.2).

The above splitting approach justifies the decompositions

$$\mathbb{E}[\Phi \mathbf{1}_{Z \in A}] = \mathbb{E}[\Phi \mathbf{1}_{Z \in A} \mid Z \in A_{n-1}] \prod_{k=1}^{n-1} \mathbb{P}(Z \in A_k \mid Z \in A_{k-1}) \quad (2.6)$$

$$= \mathbb{E}[\Phi \mid Z \in A_n] \prod_{k=1}^n \mathbb{P}(Z \in A_k \mid Z \in A_{k-1}). \quad (2.7)$$

2.2 Gaussian Shaker

The subsequent algorithms make use of reversible transformations on the Gaussian path X , as defined below.

Definition 1 (Shaker). Let $\rho := (\rho_h : h \in \mathfrak{b}\mathcal{H}) \in [-1, 1]^{\mathfrak{b}\mathcal{H}}$ and define

$$K : \begin{cases} \mathbb{R}^{\mathcal{H}} \times \mathbb{R}^{\mathcal{H}} & \mapsto \mathbb{R}^{\mathcal{H}} \\ (x, x') := (x_h : h \in \mathfrak{b}\mathcal{H}, x'_h : h \in \mathfrak{b}\mathcal{H}) & \rightarrow (\rho_h x_h + \sqrt{1 - \rho_h^2} x'_h : h \in \mathfrak{b}\mathcal{H}). \end{cases} \quad (2.8)$$

Whenever useful, we will write K_ρ to insist on the dependence on the so-called shaking parameter ρ .

If $X' = (X'(h) : h \in \mathcal{H})$ is an independent copy of X , we simply denote by \mathcal{K} the random transformation from $\mathbb{R}^{\mathcal{H}} \mapsto \mathbb{R}^{\mathcal{H}}$ as

$$\mathcal{K}(x) = K(x, X').$$

In the stochastic analysis literature, the above parametrized transformation for a constant parameter $\rho_h = \text{constant} \in (0, 1)$ is associated to the Ornstein-Uhlenbeck (or Mehler) semigroup (see [Nua06, Section 1.4]) and simply writes

$$K(x, x') = \rho x + \sqrt{1 - \rho^2} x', \quad (2.9)$$

independently of the choice of the basis $\mathfrak{b}\mathcal{H}$.

We call the transformation (2.8) *shaker* and it satisfies the following reversibility property.

Proposition 1 (Reversible shaker). *The following identity holds in distribution:*

$$(X, K(X, X')) \stackrel{d}{=} (K(X, X'), X).$$

This type of reversibility property is well-known in the Markov Chain Monte-Carlo literature when studying the convergence of Markov chains in large time. Thus, the shaker (2.8) preserves the distribution of X (seen now as a stationary measure) and by iterating the transformations and averaging out the outputs in time, we may obtain a numerical evaluation of related expectations (Birkhoff Law of Large Numbers). Actually, we can prove the convergence in \mathbf{L}_2 with an explicit error bound. Our proof relies on the generalized Gebelein inequality [Geb41] for the maximal correlation between Gaussian subspaces [Jan97, Chapter 10].

Theorem 2. *Let $f : \mathbf{Z} \mapsto \mathbb{R}$ be a measurable function and assume that $f(Z) \in \mathbf{L}_2$ where $Z = \Psi_Z(X)$ as in (2.1). Define $X_0 = X, X_{k+1} = K_\rho(X_k, X'_k)$ and $Z_k = \Psi_Z(X_k)$ where the X'_k are independent copies of X . Then, for $|\rho|_\infty := \sup_{h \in \mathfrak{b}\mathcal{H}} |\rho_h| < 1$,*

$$\left| \frac{1}{N} \sum_{k=1}^N f(Z_k) - \mathbb{E}[f(Z)] \right|_{\mathbf{L}_2}^2 \leq \frac{\text{Var}(f(Z))}{N} \left(\frac{1 + |\rho|_\infty}{1 - |\rho|_\infty} \right), \quad \forall N \geq 1. \quad (2.10)$$

Proof. Denote by e_N the l.h.s. of the above inequality. We have

$$e_N = \frac{1}{N^2} \left[\sum_{1 \leq k \leq N} \text{Var}(f(Z_k)) + 2 \sum_{1 \leq k < l \leq N} \text{Cov}(f(Z_k), f(Z_l)) \right].$$

By the reversible shaker property, Z_k and Z have the same law, thus $\sum_{k=1}^N \text{Var}(f(Z_k)) = N \text{Var}(f(Z))$. On the other hand, for $l > k$, we have

$$|\text{Cov}(f(Z_k), f(Z_l))| \leq \rho_{X_k, X_l} \sqrt{\text{Var}(f(Z_k))} \sqrt{\text{Var}(f(Z_l))} = \rho_{X_k, X_l} \text{Var}(f(Z))$$

where ρ_{X_k, X_l} is the so-called *Renyi maximal correlation coefficient* between X_k and X_l , i.e. the supremum of the correlation between a function g_k of X_k and a function g_l of X_l , the supremum being taken over all functions (g_k, g_l) with squared integrability properties. We claim that

$$\rho_{X_k, X_l} \leq |\rho|_\infty^{l-k}. \quad (2.11)$$

The proof is provided at the end. With (2.11) at hand, we deduce

$$\left| \sum_{1 \leq k < l \leq N} \text{Cov}(f(Z_k), f(Z_l)) \right| \leq N \frac{|\rho|_\infty}{1 - |\rho|_\infty} \text{Var}(f(Z)).$$

Finally, we get

$$e_N \leq \frac{\text{Var}(f(Z))}{N} \left[1 + 2 \frac{|\rho|_\infty}{1 - |\rho|_\infty} \right],$$

which finishes the proof of (2.10).

It remains to justify (2.11). This is a consequence of [Jan97, Theorem 10.11]. Indeed, assume without loss of generality that $k = 1$ (for notational convenience). Now define a Gaussian Hilbert space \mathcal{G} for all the variables from shaker iteration $k = 1$ to $l > 1$. For this, set $\mathfrak{H} := \{\mathfrak{h} = (h_1, \dots, h_l) \in \mathcal{H}^l\}$: endowed with the scalar product $\langle \mathfrak{h}, \mathfrak{g} \rangle_{\mathfrak{H}} = \sum_{i=1}^l \langle h_i, g_i \rangle_{\mathcal{H}}$, \mathfrak{H} is a Hilbert space to which we associate the Gaussian process $\mathfrak{X} = \{\mathfrak{X}(\mathfrak{h}) : \mathfrak{h} \in \mathfrak{H}\}$. Let \mathcal{G} denote the Gaussian Hilbert space spanned by $\{\mathfrak{X}(\mathfrak{h}) : \mathfrak{h} \in \mathfrak{H}\}$.

In view of (2.8) we observe that (X_1, X_l) can be realized jointly as follows:

$$\begin{aligned} X_1 &= \left\{ \mathfrak{X}(\mathfrak{h}) : \mathfrak{h} = (h, 0, \dots, 0), h \in \mathfrak{b}\mathcal{H} \right\}, \\ X_l &= \left\{ \mathfrak{X}(\mathfrak{h}) : \mathfrak{h} = (\rho_h^{l-1} h, \rho_h^{l-2} \sqrt{1 - \rho_h^2} h, \dots, \sqrt{1 - \rho_h^2} h), h \in \mathfrak{b}\mathcal{H} \right\}. \end{aligned}$$

Let \mathcal{G}_1 denote the Gaussian subspace spanned by $\{\mathfrak{X}(\mathfrak{h}) : \mathfrak{h} = (h, 0, \dots, 0), h \in \mathcal{H}\}$ and similarly for \mathcal{G}_l . Then, [Jan97, Theorem 10.11] states that ρ_{X_1, X_l} is equal to the norm of the operator $P_{\mathcal{G}_l, \mathcal{G}_1}$ which is defined as the orthogonal projection of \mathcal{G} onto \mathcal{G}_l and then restricted to \mathcal{G}_1 . This is now an easy exercise to check that $\|P_{\mathcal{G}_l, \mathcal{G}_1}\| \leq |\rho|_\infty^{l-1}$. The proof of (2.11) is complete. \square

2.3 Reminder of IPS and POP on path space

In this section, we briefly recall IPS and POP methods on the path space developed in [GL15]. Here the state values of X that serves to model the REV Z in (2.1) lies in the path space $\mathbb{R}^{\mathcal{H}}$. Both the methods use approximations of conditional distribution of X to estimate $\mathbb{E} [\Psi_{\Phi}(X) \mathbf{1}_{\Psi_Z(X) \in A_k} | \Psi_Z(X) \in A_{k-1}]$ where (Ψ_{Φ}, Ψ_Z) are measurable mappings which transform the path X to the rare-event model (Φ, Z) (defined in (2.1) and (2.3)). Recall the definitions of A_k in Equation (2.4). The IPS method is based on the interaction of a large number of particles (average in space) whereas the POP method is based on the ergodic property of Markov chain (average in time). In both techniques we need the following shaking with rejection transformation

$$M_k^K : \begin{cases} \mathbb{R}^{\mathcal{H}} \times \mathbb{R}^{\mathcal{H}} \rightarrow \mathbb{R}^{\mathcal{H}}, \\ (x, x') \mapsto K(x, x') \mathbf{1}_{\Psi_Z(K(x, x')) \in A_k} + x \mathbf{1}_{\Psi_Z(K(x, x')) \notin A_k}. \end{cases} \quad (2.12)$$

Intuitively, the above transformation states that for starting state $x \in \mathbb{R}^{\mathcal{H}}$ and innovation $x' \in \mathbb{R}^{\mathcal{H}}$, we apply the transformation and keep it as the next state if $\Psi_Z(K(x, x')) \in A_k$ for $x' \in \mathbb{R}^{\mathcal{H}}$. Otherwise, we restart from the current state x . Define $\mathcal{M}_k^K(\cdot) := M_k^K(\cdot, X')$ where X' is the generic isonormal Gaussian path.

2.3.1 IPS method

We recall the algorithm to compute rare event probability $\mathbb{P}(\Psi_Z(X) \in A)$. To this end, we define a Markov chain as follows:

Definition 2. $(X_i)_{0 \leq i \leq n-1}$ is a $\mathbb{R}^{\mathcal{H}}$ -valued Markov chain, such that

$$X_0 \stackrel{d}{=} X, \quad X_i := \mathcal{M}_i^K(X_{i-1}) = M_i^K(X_{i-1}, X'_{i-1}) \quad \text{for } 1 \leq i \leq n-1,$$

where $(X'_i)_{0 \leq i \leq n-2}$ is a sequence of independent copies of X and independent of X_0 .

With the above definition we obtain the following result (see [GL15, Theorem 2.4]).

Theorem 3. For any bounded measurable function $\varphi : \mathbb{R}^{\mathcal{H}} \rightarrow \mathbb{R}$ we have

$$\begin{aligned} \mathbb{E} [\varphi(X) \mathbf{1}_{\Psi_Z(X) \in A}] &= \mathbb{E} \left[\varphi(X_{n-1}) \prod_{i=0}^{n-1} \mathbf{1}_{A_{i+1}}(\Psi_Z(X_i)) \right], \\ \mathbb{E} [\varphi(X) | \Psi_Z(X) \in A] &= \frac{\mathbb{E} [\varphi(X_{n-1}) \prod_{i=0}^{n-1} \mathbf{1}_{A_{i+1}}(\Psi_Z(X_i))]}{\mathbb{E} [\prod_{i=0}^{n-1} \mathbf{1}_{A_{i+1}}(\Psi_Z(X_i))]} \end{aligned}$$

The interpretation of rare event probability as an expectation related to a Markov chain, i.e. in a Feynman-Kac measure way, enables the use of IPS method, as described precisely in the following algorithm:

Initialization:

Draw $(X_0^{(M,m)}, m = 1, \dots, M)$ which are M independent copies of X ;

$p_0^{(M)} = \frac{1}{M} \sum_{m=1}^M \mathbf{1}_{A_1}(\Psi_Z(X_0^{(M,m)}))$;

for $i = 0$ **until** $n - 2$ **do**

$I_i := \{m \in \{1, \dots, M\} \text{ s.t. } \Psi_Z(X_i^{(M,m)}) \in A_{i+1}\}$;

for $m = 1$ **until** M **do**

Selection step:

if $\Psi_Z(X_i^{(M,m)}) \in A_{i+1}$ **then**

$\hat{X}_i^{(M,m)} = X_i^{(M,m)}$;

else

$\hat{X}_i^{(M,m)} = X_i^{(M,\hat{m})}$ where \hat{m} is drawn independently of everything else
 and uniformly in the set I_i ;

end

Mutation step:

$X_{i+1}^{(M,m)} = M_{i+1}^K(\hat{X}_i^{(M,m)}, X_i'^{(m)})$;

end

$p_{i+1}^{(M)} = \frac{1}{M} \sum_{m=1}^M \mathbf{1}_{A_{i+2}}(\Psi_Z(X_{i+1}^{(M,m)}))$;

end

Result: $p^{(M)} = \prod_{i=0}^{n-1} p_i^{(M)}$

Algorithm 1: Interacting Particle System (IPS) algorithm for computing $\mathbb{P}(\Psi_Z(X) \in A)$.

The idea behind this algorithm is to imitate the evolutionary selection and mutation process by the interaction of a large number of particles such that each generation approximates particular conditional distribution of X . A complete discussion of IPS algorithm can be found in [Del04].

2.3.2 POP method

Unlike IPS method where all $\mathbb{P}(\Psi_Z(X) \in A_{k+1} \mid \Psi_Z(X) \in A_k)$ are estimated using the evolution the same particle system, thus dependently, POP method estimates each conditional probability separately. The key observation for this technique is that the conditional distribution $X \mid \Psi_Z(X) \in A_k$ is invariant with respect to the shaking with rejection $\mathcal{M}_k^K(\cdot)$.

Proposition 4 ([GL15, Proposition 2.2]). *Let $k \in \{0, 1, \dots, n-1\}$. The distribution of X conditionally on $\{\Psi_Z(X) \in A_k\}$ is invariant w.r.t. the random transformation \mathcal{M}_k^K , i.e. for any bounded measurable $\varphi: \mathbb{R}^d \rightarrow \mathbb{R}$ we have*

$$\mathbb{E}[\varphi(\mathcal{M}_k^K(X)) \mid \Psi_Z(X) \in A_k] = \mathbb{E}[\varphi(X) \mid \Psi_Z(X) \in A_k].$$

Then, we define a Markov chain based on the transformation \mathcal{M}_k^K which has the above conditional distribution as invariant measure.

Definition 3. *For each $k = 0, \dots, n-1$, given a starting point $X_{k,0} \in \Psi_Z^{-1}(A_k)$, define*

$$X_{k,i} := \mathcal{M}_k^K(X_{k,i-1}) = M_k^K(X_{k,i-1}, X'_{k,i-1}) \quad \text{for } i \geq 1 \quad (2.13)$$

where $(X'_{k,i})_{i \geq 0}$ is a sequence of independent copies of X' and independent of $X_{k,0}$.

If the above defined Markov chain is ergodic, we have the following approximation:

$$\mathbb{E}[\varphi(\Psi_Z(X)) \mid \Psi_Z(X) \in A_k] \approx \frac{1}{N} \sum_{i=0}^{N-1} \varphi(\Psi_Z(X_{k,i})), \quad \text{as } N \rightarrow +\infty.$$

Taking $\varphi \equiv \mathbf{1}_{A_{k+1}}$ yields an approximation of $\mathbb{P}(\Psi_Z(X) \in A_{k+1} \mid \Psi_Z(X) \in A_k)$ and therefore the product of all the estimators gives an estimation of the rare event probability $\mathbb{P}(\Psi_Z(X) \in A)$ due to (2.6). The following algorithm gives a way to automatically initialize each Markov chain. Since the initialization is not done according to the stationary distribution, some burn-in time could be added.

```

Initialization: ;
X0,0 is a copy of X ;
for k = 0 until n - 1 do
  for i = 1 until N - 1 do
    | Xk,i = MkK(Xk,i-1, X'k,i-1) ;
  end
  pk(N) =  $\frac{1}{N} \sum_{i=0}^{N-1} \mathbf{1}_{A_{k+1}}(\Psi_Z(X_{k,i}))$  ;
  ik = arg min{j : ΨZ(Xk,j) ∈ Ak+1} ;
  Xk+1,0 = Xk,ik
end
Result: p(N) =  $\prod_{k=0}^{n-1} p_k^{(N)}$ 

```

Algorithm 2: Parallel One-Path (POP) algorithm for computing $\mathbb{P}(\Psi_Z(X) \in A)$.

Among all the features of this algorithm, we mention that the POP method is especially suitable for parallel implementation (since the n Markov chains run in parallel independently) and is very economical in terms of the required computer memory (order $O(n)$ for storing the running states of the n Markov chains) compared to the IPS method (order $O(M)$ for storing the full particle systems).

2.4 Sensitivity analysis in the Gaussian space

Assume that the model at hand depends on a real-valued parameter θ , through the definition of Z and Φ so that $\mathbb{E}[\Phi \mathbf{1}_{Z \in A}]$ now should be written as $\mathbb{E}[\Phi^\theta \mathbf{1}_{Z^\theta \in A}]$. The sensitivity of the above quantity w.r.t. θ is an important issue to account for because the errors in model calibration and estimation procedures could have a significant impact. This concerns the evaluation of model risk (see e.g. [Con06]). This question is even more delicate when combined with rare-event analysis since it is known that tails are very sensitive to parameter shocks [AS12]. For instance, if $G_\sigma \stackrel{d}{=} \mathcal{N}(0, \sigma^2)$ then

$$\lim_{x \rightarrow +\infty} \frac{\mathbb{P}(G_\sigma \geq x)}{\mathbb{P}(G_{\sigma'} \geq x)} = \begin{cases} 0 & \text{if } 0 < \sigma < \sigma' \\ +\infty & \text{if } \sigma > \sigma' > 0 \end{cases}, \quad (2.14)$$

i.e. a small change of parameters may cause a large change of tail-probabilities.

To quantify the impact of θ on $\mathbb{E}[\Phi^\theta \mathbf{1}_{Z^\theta \in A}]$, we may evaluate the derivative w.r.t. θ whenever it exists. However, this quantity may be uninformative in practice since in our rare-event setting, the above expectation is small and likely its derivative too. Alternatively, we suggest to evaluate the relative sensitivity defined by

$$\frac{\partial_\theta \mathbb{E}[\Phi^\theta \mathbf{1}_{Z^\theta \in A}]}{\mathbb{E}[\Phi^\theta \mathbf{1}_{Z^\theta \in A}]}$$

provided that $\mathbb{E}[\Phi^\theta \mathbf{1}_{Z^\theta \in A}]$ is differentiable in θ and non zero.

Regarding the computational aspects, the derivative $\partial_\theta \mathbb{E}[\Phi^\theta \mathbf{1}_{Z^\theta \in A}]$ can be estimated by the resimulation method as follows: Take two values of θ which are close to each other, approximate expectation for each value of θ by Monte-Carlo simulations and form the finite difference as an estimator of the derivative. This is known to be not well suited to the case where the functional inside the expectation is irregular in θ which is typically our case because of the indicator function. A better strategy is to represent the derivative as an expectation (known as the likelihood method in the case of explicit distributions, or based on Integration-By-Parts formula in the Malliavin calculus setting [FLL+99]) and then evaluate it by simulations. This is our approach which we formulate as an assumption.

(IBP) There exists an open set $\Theta \subset \mathbb{R}$ such that $\theta \mapsto \mathbb{E}[\Phi^\theta \mathbf{1}_{Z^\theta \in A}]$ is differentiable on Θ and for any $\theta \in \Theta$, there is an integrable random variable $\mathcal{I}(Z^\theta, \Phi^\theta)$ such that

$$\partial_\theta \mathbb{E}[\Phi^\theta \mathbf{1}_{Z^\theta \in A}] = \mathbb{E}[\mathcal{I}(Z^\theta, \Phi^\theta) \mathbf{1}_{Z^\theta \in A}].$$

Combining this with the splitting approach of Equation (2.7) gives a simple representation of the relative sensitivity.

Proposition 5. Assume **(IBP)**. For any $\theta \in \Theta$ such that $\mathbb{E}[\Phi^\theta \mathbf{1}_{Z^\theta \in A}] \neq 0$, we have

$$\frac{\partial_\theta \mathbb{E}[\Phi^\theta \mathbf{1}_{Z^\theta \in A}]}{\mathbb{E}[\Phi^\theta \mathbf{1}_{Z^\theta \in A}]} = \frac{\mathbb{E}[\mathcal{I}(Z^\theta, \Phi^\theta) \mid Z^\theta \in A]}{\mathbb{E}[\Phi^\theta \mid Z^\theta \in A]}.$$

It is important to observe that this can be directly evaluated by the POP method using the ratio of two time-average approximations of $\mathcal{I}(Z^\theta, \Phi^\theta)$ and Φ^θ respectively, along only one Markov chain defined by applying shaking with rejection with respect to $Z^\theta \in A$. The computations at intermediate levels are unnecessary which very much simplifies the numerical evaluation. When we are concerned by the sensitivity of the rare-event probability, it takes the simple form

$$\partial_\theta [\log (\mathbb{P}(Z^\theta \in A))] := \frac{\partial_\theta \mathbb{P}(Z^\theta \in A)}{\mathbb{P}(Z^\theta \in A)} = \mathbb{E} [\mathcal{I}(Z^\theta, 1) \mid Z^\theta \in A].$$

In full generality on the probabilistic setting, the determination of $\mathcal{I}(Z^\theta, \Phi^\theta)$ is difficult but in our Gaussian noise setting, it can be achieved using the Integration by Parts formula of Malliavin calculus. There are numerous situations where one can obtain such a representation for sensitivities (see [FLL⁺99, Gob04, GM05, KY09] among others, and [Nua06, Section 6.2] for more references). We establish such a result in the case Z^θ takes values in \mathbb{R}^d , and Z^θ, Φ^θ are smooth in θ . Hereafter, we adopt and follow the notation of [Nua06] for the derivative operator D , for the space $\mathbf{D}^{1,2}$ of random variables that are one time Malliavin differentiable with \mathbf{L}_2 -integrability, and for the divergence operator δ . We say that a family of random variables $(U^\theta : \theta \in \Theta)$ is in \mathbf{L}_p^{loc} ($p \geq 1$) if for any $\theta \in \Theta$, there is a open set $V_\theta \subset \Theta$ containing θ such that $\sup_{\theta' \in V_\theta} |U^{\theta'}|$ is bounded by a random variable in \mathbf{L}_p .

Theorem 6. Consider $\mathbf{Z} = \mathbb{R}^d$ and let $q > d$. Assume the following conditions:

- (a) $(\Phi^\theta, \theta \in \Theta)$ is in \mathbf{L}_2^{loc} and Z^θ has a \mathbf{L}_q -norm bounded locally uniformly in θ ;
- (b) Φ^θ and Z^θ are continuous and differentiable on Θ and their derivatives $(\dot{\Phi}^\theta, \dot{Z}^\theta : \theta \in \Theta)$ are respectively in \mathbf{L}_1^{loc} and \mathbf{L}_2^{loc} ;
- (c) for any $\theta \in \Theta$, $Z^\theta \in \mathbf{D}^{1,2}$ and the Malliavin covariance matrix $\gamma_{Z^\theta} := (\langle D.Z_i^\theta, D.Z_j^\theta \rangle_{\mathcal{H}})_{1 \leq i, j \leq d}$ is invertible a.s.;
- (d) for any $\theta \in \Theta$, $\Phi^\theta \sum_{j=1}^d (\gamma_{Z^\theta}^{-1} \dot{Z}^\theta)_j D.Z_j^\theta$ is in the domain of δ and $\dot{\Phi}^\theta + \delta(\Phi^\theta \sum_{j=1}^d (\gamma_{Z^\theta}^{-1} \dot{Z}^\theta)_j D.Z_j^\theta)$ has a \mathbf{L}_2 -norm bounded locally uniformly in θ ;
- (e) for any $\theta \in \Theta$ and any $i \in \{1, \dots, d\}$, $\sum_{j=1}^d (\gamma_{Z^\theta}^{-1})_{j,i} D.Z_j^\theta$ is in the domain of δ and $\delta(\sum_{j=1}^d (\gamma_{Z^\theta}^{-1})_{j,i} D.Z_j^\theta)$ has a \mathbf{L}_q -norm bounded locally uniformly in θ .

Then (IBP) is satisfied on Θ and

$$\mathcal{I}(Z^\theta, \Phi^\theta) := \dot{\Phi}^\theta + \delta \left(\Phi^\theta \sum_{j=1}^d (\gamma_{Z^\theta}^{-1} \dot{Z}^\theta)_j D.Z_j^\theta \right).$$

Proof. The proof follows a standard routine inspired by [FLL⁺99, Gob04, GM05, KY09] but it requires a careful analysis because of the indicator function. Firstly, properly mollify the indicator function $z \rightarrow \mathbf{1}_{\varphi(z, \bar{a}) \leq 0}$. Secondly, compute the derivative of the expectation for the mollified function, then, integrate by parts and take the limit w.r.t. the mollified parameter. Mollifying and passing to the limit is the critical part. In [KY09, Section 6], it has been done for functions which are almost everywhere continuous. Here we do not impose such restrictions.

Step 1. Let us define the measure $\bar{\mu}(dz) = (1 + |z|)^{-q} dz$ on \mathbb{R}^d with q as in the statement and as $q > d$, this is a finite measure. Since $\mathbf{1}_A$ is in $\mathbf{L}_4(\mu)$, there is a sequence $(\xi_k)_{k \in \mathbb{N}}$ of smooth functions with compact support, such that

$$\int_{\mathbb{R}^d} |\mathbf{1}_{z \in A} - \xi_k(z)|^4 (1 + |z|)^{-q} dz \xrightarrow[k \rightarrow +\infty]{} 0. \quad (2.15)$$

W.l.o.g. we assume that $0 \leq \xi_k \leq 1$. Now, define

$$\begin{aligned} u_k(\theta) &:= \mathbb{E} [\Phi^\theta \xi_k(Z^\theta)], & u(\theta) &:= \mathbb{E} [\Phi^\theta \mathbf{1}_{Z^\theta \in A}], \\ v_k(\theta) &:= \mathbb{E} [\mathcal{I}(Z^\theta, \Phi^\theta) \xi_k(Z^\theta)], & v(\theta) &:= \mathbb{E} [\mathcal{I}(Z^\theta, \Phi^\theta) \mathbf{1}_{Z^\theta \in A}]. \end{aligned}$$

Going forward, we shall establish three results. Firstly, $u_k(\theta) \xrightarrow[k \rightarrow +\infty]{} u(\theta)$ for any $\theta \in \Theta$, then, $u'_k(\theta) = v_k(\theta)$ for any $\theta \in \Theta$, and finally, v_k converges to v locally uniformly on Θ . By [Die90, Statement (8.6.4) Chap. VIII], this proves that u is differentiable on Θ and its derivative is v .

Step 2: Proof of $u'_k(\theta) = v_k(\theta)$. We can show

$$u'_k(\theta) = \partial_\theta \mathbb{E} [\Phi^\theta \xi_k(Z^\theta)] = \mathbb{E} [\dot{\Phi}^\theta \xi_k(Z^\theta)] + \mathbb{E} \left[\Phi^\theta \sum_{i=1}^d \partial_{z_i} \xi_k(Z^\theta) \dot{Z}_i^\theta \right],$$

from the dominated convergence theorem using the boundedness of $\xi_k, \nabla \xi_k$ and the uniform controls in the assumptions (a)-(b). Further, by the chain rule property, $\xi_k(Z^\theta) \in \mathbf{D}^{1,2}$ with $D[\xi_k(Z^\theta)] = \sum_{i=1}^d \partial_{z_i} \xi_k(Z^\theta) D.Z_i^\theta$. Moreover by definition of δ as the adjoint operator of D , we have

$$\begin{aligned} v_k(\theta) &= \mathbb{E} \left[\dot{\Phi}^\theta \xi_k(Z^\theta) + \left\langle \sum_{i=1}^d \partial_{z_i} \xi_k(Z^\theta) D.Z_i^\theta, \Phi^\theta \sum_{j=1}^d (\gamma_{Z^\theta}^{-1} \dot{Z}^\theta)_j D.Z_j^\theta \right\rangle_{\mathcal{H}} \right] \\ &= \mathbb{E} \left[\dot{\Phi}^\theta \xi_k(Z^\theta) + \Phi^\theta \sum_{i=1}^d \partial_{z_i} \xi_k(Z^\theta) \sum_{j=1}^d (\gamma_{Z^\theta})_{i,j} (\gamma_{Z^\theta}^{-1} \dot{Z}^\theta)_j \right] \\ &= \mathbb{E} \left[\dot{\Phi}^\theta \xi_k(Z^\theta) + \Phi^\theta \sum_{i=1}^d \partial_{z_i} \xi_k(Z^\theta) \dot{Z}_i^\theta \right] = u'_k(\theta). \end{aligned}$$

Step 3: Proof of $(u_k, v_k) \xrightarrow[k \rightarrow +\infty]{} (u, v)$ locally uniformly on Θ . Assume for a while the \mathbf{L}_2 -convergence

$$\mathbb{E} [|\xi_k(Z^\theta) - \mathbf{1}_{Z^\theta \in A}|^2] \xrightarrow[k \rightarrow +\infty]{} 0 \quad \text{locally uniformly in } \theta \in \Theta. \quad (2.16)$$

Then from above and (d), we deduce that for any $\theta \in \Theta$, there is an open set $V \subset \theta$ such that

$$|v_k(\theta) - v(\theta)| \leq \sup_{\theta \in V} \left| \dot{\Phi}^\theta + \delta \left(\Phi^\theta \sum_{j=1}^d (\gamma_{Z^\theta}^{-1} \dot{Z}^\theta)_j D.Z_j^\theta \right) \right| \sup_{\theta \in V} |\xi_k(Z^\theta) - \mathbf{1}_{Z^\theta \in A}|_{\mathbf{L}_2} \xrightarrow[k \rightarrow +\infty]{} 0.$$

The same arguments apply for $u_k - u$. Consequently, it remains to justify (2.16).

Under the assumption (e), we have the integration by parts formula at order 1 (derived as in the proof of Step 2), i.e. for any smooth function ζ with compact support and any $i \in \{1, \dots, d\}$,

$$\mathbb{E} [\partial_{z_i} \zeta(Z^\theta)] = \mathbb{E} \left[\zeta(Z^\theta) \delta \left(\sum_{j=1}^d (\gamma_{Z^\theta}^{-1})_{j,i} D.Z_j^\theta \right) \right].$$

Therefore, from [Shi04, Theorem 5.4] the distribution of Z^θ has a continuous density $p_{Z^\theta}(\cdot)$ w.r.t. the Lebesgue measure, which is uniformly bounded by a function depending only on the \mathbf{L}_q -norms of $\delta \left(\sum_{j=1}^d (\gamma_{Z^\theta}^{-1})_{j,i} D.Z_j^\theta \right)$, $1 \leq i \leq d$. In view of (a)-(e), we deduce that for any $\theta \in \Theta$, there is a neighborhood $V \subset \Theta$ of θ such that $\sup_{\theta' \in V} |p_{Z^{\theta'}}|_\infty := C_V < +\infty$, and

$$\begin{aligned} \mathbb{E} [|\xi_k(Z^{\theta'}) - \mathbf{1}_{Z^{\theta'} \in A}|^2] &\leq \left(\mathbb{E} [|\xi_k(Z^{\theta'}) - \mathbf{1}_{Z^{\theta'} \in A}|^4 (1 + |Z^{\theta'}|)^{-q}] \right)^{1/2} \left(\mathbb{E} [(1 + |Z^{\theta'}|)^q] \right)^{1/2} \\ &\leq \left(\int_{\mathbb{R}^d} |\xi_k(z) - \mathbf{1}_{z \in A}|^4 (1 + |z|)^{-q} C_V dz \right)^{1/2} \sup_{\theta' \in V} \left(\mathbb{E} [(1 + |Z^{\theta'}|)^q] \right)^{1/2}. \end{aligned}$$

Owing to (2.15), the above converges to 0 as $k \rightarrow +\infty$, uniformly w.r.t. $\theta' \in V$, and (2.16) is proved. \square

3 Convergence discussion for POP method

3.1 Convergence with fixed intermediate levels

Using the Gebelein maximal correlation inequality in Gaussian Hilbert spaces, we have proven the convergence result for reversible Gaussian shaking transformation in Theorem 2. However, further work is needed to see how to use similar techniques in the case of shaking with rejection. In this subsection, we will summarize some existing results about the ergodicity of Markov chains and explain how to apply them in the case of shaking with rejection. The discussion in this subsection applies not only to Gaussian variables but also to other kinds of variables mentioned in [GL15].

It is a classical result that the occupation measure of an irreducible and stationary Markov chain will converge in some sense to its invariant measure. A short proof for such result using the ergodic theorem and martingale techniques can be found in [AG11].

Theorem 7 ([AG11]). *Let S be a measurable space. Assume that X is an S -valued Markov chain, starting at a given x , which is η -irreducible for some measure η and has a stationary distribution π . Then, for $f : S \rightarrow \mathbb{R}_+$*

$$\frac{1}{N} \sum_{j=0}^{N-1} f(X_j) \rightarrow \int_S f(y) \pi(dy) \quad \mathbb{P}_x - a.s. \quad (3.1)$$

as $N \rightarrow +\infty$ for π -a.a. $x \in S$. If in addition, the one step transition kernel can be written either as

$$\mathbb{P}_x(X_1 \in dy) = p(x, y) \eta(dy)$$

or as

$$\mathbb{P}_x(X_1 \in dy) = (1 - a(x)) \delta_x(dy) + a(x, y) p(x, y) \eta(dy) \quad (3.2)$$

with $a(x) > 0$ for each $x \in S$, then X is a positive recurrent Harris chain and the convergence (3.1) holds for all $x \in S$.

Using the above results, we can show that the POP method with $|\rho|_\infty < 1$ converges almost surely in all the finite dimensional cases (i.e. $S = \mathcal{H} = \mathbb{R}^q$ of Example 1). Firstly, we explain how the transformation with shaking and rejection at level k (defined in (2.12)) can be interpreted in the form (3.2), which is well-known as *Metropolis-Hastings sampler*. Unlike usual Metropolis-Hastings sampler where explicit transition densities and acceptance functions are used, we use implicit transition densities and acceptance functions. Namely, in the case of shaking for standard q -dimensional normal variable, i.e. $K(x, X') = (\rho_i x_i + \sqrt{1 - \rho_i^2} X'_i)_{1 \leq i \leq q}$ with i.i.d. standard Gaussian variables $(X'_i)_{1 \leq i \leq q}$, the measure η can be taken as the Lebesgue measure on \mathbb{R}^q and the transition density is given by

$$p(x, y) = \exp\left(-\sum_{i=1}^q \frac{|y_i - \rho_i x_i|^2}{2(1 - \rho_i^2)}\right) (2\pi)^{-q/2} \prod_{i=1}^q (1 - \rho_i^2)^{-1/2}$$

(here we use $\sup_{1 \leq i \leq q} |\rho_i| = |\rho|_\infty < 1$). Then the acceptance function corresponds to $a(x, y) = 1_{\Psi_Z(y) \in A_k}$ and the local mean acceptance rate to $a(x) = \int_{\mathbb{R}^q} a(x, y) p(x, y) dy$.

Secondly, the assumption $a(x) > 0$ writes in our rare event setting as $\mathbb{P}(\Psi_Z(K(x, X')) \in A_k) > 0$ for any x s.t. $\Psi_Z(x) \in A_k$. This inequality holds true since we assume $0 < \mathbb{P}(Z \in A) \leq \mathbb{P}(\Psi_Z(X) \in A_k)$, i.e. $\Psi_Z^{-1}(A_k)$ has a strictly positive Lebesgue measure.

Thirdly, notice that the existence of a stationary distribution has been shown previously (Proposition 4) and we can easily see that the Markov chain in POP method is η -irreducible, due to the strictly positive transition density p . Therefore, from Theorem 7 we easily deduce the almost sure convergence at each level, using the *random* initialization described in Algorithm 2, which finally leads to the following result.

Proposition 8. *POP method with $|\rho|_\infty < 1$ converges almost surely in the finite dimensional case $\mathcal{H} = \mathbb{R}^q$.*

Another well-known result for positive Harris recurrent Markov chain is that if the chain is in addition aperiodic, then its marginal distribution converges to its stationary distribution (see for example [MT09, Theorem 13.0.1]). The existence of an implicit positive transition density p ensures that our Markov chain is aperiodic and we have the following result.

Proposition 9. *For any fixed $k \in \{0, \dots, n-1\}$, denote by $\mathcal{L}(X_{k,N}^{x_{k,0}})$ the law of $X_{k,N}^{x_{k,0}}$ with initialization at a given point $X_{k,0} = x_{k,0} \in \Psi_Z^{-1}(A_k)$, and denote the distribution of X conditionally on $\{\Psi_Z(X) \in A_k\}$ by π_k . Then, for any $x_{k,0} \in \Psi_Z^{-1}(A_k)$ we have*

$$\|\mathcal{L}(X_{k,N}^{x_{k,0}}) - \pi_k\|_{\text{TV}} \rightarrow 0$$

as $N \rightarrow +\infty$, where $\|\cdot\|_{\text{TV}}$ denotes the total variation norm.

The convergence of marginal distributions may have interesting practical use. For example, let X denote the financial random environment that a banking system faces, and Z denote the related risk exposure. In order to test the system resilience, regulators usually design some stress test scenario which means imposing a presumably rare event in A on the banking system and then see how the system reacts to this event. Some references on the design of stress test can be found in [Eur08]. In most stress testing designs, regulators artificially construct one or a few elements in A . Using the POP method and Proposition 9, one can sample approximately according to the conditional distributions $X|Z \in A$ and/or $Z|Z \in A$, which gives a more relevant choice of stress test scenarios.

3.2 Convergence with adaptive intermediate acceptance levels

3.2.1 Algorithm

For good numerical performance, one may wish that the conditional probabilities at intermediate levels of POP method are of the same order (for example, in [Lag06] it is argued that the equiprobability choice minimizes the variance of splitting algorithms). However, the appropriate choice of intermediate levels to ensure this condition requires apriori knowledge about the nature of the rare event under consideration. In the absence of such knowledge, choosing appropriate intermediate levels is challenging. Here, we propose an adaptive POP method where at each level, except for the last, the conditional probability is fixed to a pre-decided value $p \in (0, 1)$ (typically 10%).

For the ease of exposition, let us suppose that Z takes values in $\mathbf{Z} = \mathbb{R}^d$ and that the rare event set is of the form $A = \{z \in \mathbb{R}^d : \varphi(z) \leq \bar{a}\}$ where $\varphi : \mathbb{R}^d \rightarrow \mathbb{R}$ is a measurable function and \bar{a} is a given finite threshold. The principle of the adapted version of POP is to set

$$A_k := \{z \in \mathbb{R}^d : \varphi(z) \leq a_k\} \quad (3.3)$$

with online computations of the acceptance level a_k . Notice that this choice of A_k corresponds to the notations (2.4)-(2.5), when defining $\varphi(z, a) := \varphi(z) - a$. For having constant conditional probabilities, we should take a_k as the quantile of $V := \varphi(\Psi_Z(X)) = \varphi(Z)$ at level p^k . This heuristics guides the following notation and definition.

We denote the p -quantile of the distribution of V as

$$Q_p^1 = F_V^{-1}(p) := \inf\{v \in \mathbb{R} : F_V(v) \geq p\}$$

where $F_V(\cdot)$ is the cumulative distribution function of V . We define the conditional quantile function $g_p(\cdot)$ of V in the following way:

$$g_p(q) := \inf\{v \in \mathbb{R} : \mathbb{P}(V \leq v \mid V \leq q) \geq p\}$$

and also recursively define

$$Q_p^{l+1} := g_p(Q_p^l), l \geq 1.$$

The above formula remains valid for $l = 0$ by setting $Q_p^0 := +\infty$. This is our convention from now on. Moreover, we define

$$r(q) := \mathbb{P}(V \leq \bar{a} \mid V \leq q),$$

then the true rare event probability $\alpha = \mathbb{P}(V \in A)$ can be written in a unique way as

$$\alpha = r(Q_p^{L^*})p^{L^*} \quad (3.4)$$

where $L^* \in \mathbb{N}$ and $r(Q_p^{L^*}) \in (p, 1]$. We are now in a position to define the POP algorithm with adaptive number of levels (approximation of L^*).

Initialization. We are given a common initialization point x_0 such that $\varphi(\Psi_Z(x_0)) \leq \bar{a}$ (we can follow the method given in [GL15, Algorithm 2]).

1st Markov chain. Simulate the first N iterations of the Markov chain based on Equation (2.13) with starting state x_0 . Then, sort the sample $(V_{N,1}^1, \dots, V_{N,N}^1)$ in ascending order as $V_{N,(1)}^1 \leq \dots \leq V_{N,(k)}^1 \leq \dots \leq V_{N,(N)}^1$ and take $k_p^1 \in \{1, \dots, N\}$ such that $k_p^1 - 1 < Np \leq k_p^1$. Denote by $\hat{Q}_{N,p}^1 = V_{N,(k_p^1)}^1$, the estimate for Q_p^1 based on N samples.

2nd Markov chain. Start the Markov chain in Equation (2.13) with initial state x_0 and with cascade event set A_1 corresponding to level $\hat{a}_1 := \hat{Q}_{N,p}^1$ (see (3.3)). Again, simulate the first N steps and sort the sample $(V_{N,1}^2, \dots, V_{N,N}^2)$ in ascending order as $V_{N,(1)}^2 \leq \dots \leq V_{N,(k)}^2 \leq \dots \leq V_{N,(N)}^2$. Take k_p^2 such that $k_p^2 - 1 < Np \leq k_p^2$ and denote by $\hat{a}_2 := \hat{Q}_{N,p}^2 = V_{N,(k_p^2)}^2$, the estimate for Q_p^2 based on N samples.

Iteration and stopping. Next, repeat the procedure until the $(L_N + 1)$ th step where we have $\hat{Q}_{N,p}^{L_N+1} \leq \bar{a}$ for the first time. The intermediate sets A_k in (3.3) are defined by the acceptance levels $\hat{a}_k = \hat{Q}_{N,p}^k$. Calculate $\hat{r}_N(\hat{Q}_{N,p}^{L_N+1})$, defined as the proportion of values $(V_{N,1}^{L_N+1}, \dots, V_{N,N}^{L_N+1})$ which are smaller than \bar{a} with the cascade event set corresponding to acceptance level $\hat{Q}_{N,p}^{L_N}$.

In the case $L_N = 0$, we set by convention $\hat{Q}_{N,p}^0 = +\infty$ (similarly to Q_p^0).

Outputs. Compute the probability estimate as

$$\hat{\alpha}_N := \hat{r}_N(\hat{Q}_{N,p}^{L_N}) p^{L_N}$$

as an approximation of the probability α written in (3.4).

Remark 3.1. In the following Theorem 10, we assume that the initial points of the above Markov chains are fixed (actually all equal to x_0). The deterministic initialization of Markov chain at each level, indeed, partly simplifies the convergence analysis. However in practice, we could advantageously start the l -th level Markov chain from a point close to the acceptance level, i.e. $X_{l,0}$ equal to the x -configuration of one of the $V_{N,(1)}^l, \dots, V_{N,(k_p^l)}^l$. The choice of $V_{N,(1)}^l$ is the simplest from algorithmic viewpoint, since we only need to update the smallest $V_{N,i}^l$ (with the corresponding X) during the algorithm run. Besides, we observe only a very small impact of initialization on the numerical results.

3.2.2 Convergence result

In order to prove the consistency of estimator $\hat{\alpha}_N$, we make the following assumptions. We discuss the applicability of these assumptions after the proof of estimator convergence.

Assumption 1. The distribution of V admits a density $q \mapsto f(q)$, which is continuous and strictly positive at $q = Q_p^l$ for all $l \in \{1, \dots, L^*\}$.

Assumption 2. For any $q \in (-\infty, +\infty]$, let $\hat{g}_{N,p}(q)$ denote the quantile estimator for $g_p(q)$ based on N iterations of the Markov chain based on the rejection set $\{x : \varphi(\Psi_Z(x)) > q\}$. For any $l \in \{0, \dots, L^* + 1\}$, there exist an open interval I_l containing Q_p^l (with the convention $Q_p^0 = +\infty$ and $I_0 = \{+\infty\}$) and a function $b : I_l \times \mathbb{N}^* \times (0, +\infty) \rightarrow [0, +\infty)$ such that for all $\varepsilon > 0$ and $q \in I_l$

$$\mathbb{P}(|\hat{g}_{N,p}(q) - g_p(q)| > \varepsilon) \leq b(q, N, \varepsilon).$$

We further assume

$$\sum_{N \geq 1} \sup_{q \in I_l} b(q, N, \varepsilon) < +\infty.$$

Assumption 3. For any $q \in (-\infty, +\infty]$, let $\hat{r}_N(q)$ denote the mean estimator for $r(q)$ based on N iterations of the Markov chain based on the rejection set $\{x : \varphi(\Psi_Z(x)) > q\}$. For any $l \in \{L^* - 1, L^*\} \cap \mathbb{N}$, there exist an open interval J_l containing Q_p^l (with the convention $J_0 = \{+\infty\}$) and a function $c : J_l \times \mathbb{N}^* \times (0, +\infty) \rightarrow [0, +\infty)$ such that for all $\varepsilon > 0$ and $q \in J_l$

$$\mathbb{P}(|\hat{r}_N(q) - r(q)| > \varepsilon) \leq c(q, N, \varepsilon).$$

We further assume

$$\sum_{N \geq 1} \sup_{q \in J_l} c(q, N, \varepsilon) < +\infty.$$

Theorem 10. Suppose that Assumptions 1, 2 and 3 hold. Then, $\hat{\alpha}_N$ converges almost surely to $\alpha = \mathbb{P}(Z \in A)$ as $N \rightarrow +\infty$.

3.2.3 Proof of Theorem 10

We split the proof in several steps.

Lemma 1. For any $l \in \{1, \dots, L^* + 1\}$ and any $\varepsilon > 0$, we have

$$\sum_{N \geq 1} \mathbb{P}\left(|\hat{Q}_{N,p}^l - Q_p^l| > \varepsilon\right) < +\infty. \quad (3.5)$$

Thus, $\hat{Q}_{N,p}^l$ converges to Q_p^l almost surely as $N \rightarrow +\infty$.

Proof. We proceed by induction on l . Assumption 2 with empty rejection ($Q_p^0 = +\infty$) ensures that (3.5) is true for $l = 1$. Now suppose that (3.5) is true for some $l \geq 1$ and let us prove it for $l + 1$. We have

$$\begin{aligned} \mathbb{P}\left(|\hat{Q}_{N,p}^{l+1} - Q_p^{l+1}| > \varepsilon\right) &\leq \mathbb{P}\left(|\hat{Q}_{N,p}^{l+1} - g_p(\hat{Q}_{N,p}^l)| > \varepsilon/2\right) + \mathbb{P}\left(|g_p(\hat{Q}_{N,p}^l) - g_p(Q_p^l)| > \varepsilon/2\right) \\ &\leq \mathbb{P}\left(|\hat{Q}_{N,p}^{l+1} - g_p(\hat{Q}_{N,p}^l)| > \varepsilon/2, \hat{Q}_{N,p}^l \in I_l\right) \\ &\quad + \mathbb{P}\left(\hat{Q}_{N,p}^l \notin I_l\right) + \mathbb{P}\left(|g_p(\hat{Q}_{N,p}^l) - g_p(Q_p^l)| > \varepsilon/2\right) \\ &:= \text{I} + \text{II} + \text{III}. \end{aligned} \quad (3.6)$$

From Assumption 2, on $\{\hat{Q}_{N,p}^l \in I_l\}$ we have

$$\mathbb{P}\left(|\hat{Q}_{N,p}^{l+1} - g_p(\hat{Q}_{N,p}^l)| > \varepsilon/2 \mid \hat{Q}_{N,p}^l \in I_l\right) \leq b(\hat{Q}_{N,p}^l, N, \varepsilon/2).$$

Thus, the term I in the right hand side of (3.6) is bounded by $\sup_{q \in I_l} b(q, N, \varepsilon/2)$, and still by Assumption 2, we get

$$\sum_{N \geq 1} \mathbb{P}\left(|\hat{Q}_{N,p}^{l+1} - g_p(\hat{Q}_{N,p}^l)| > \varepsilon/2, \hat{Q}_{N,p}^l \in I_l\right) < +\infty. \quad (3.7)$$

Furthermore, Assumption 1 implies that the function $g_p(q)$ is continuous at $q = Q_p^l$. This combined with the induction hypothesis at level l implies that the series with general terms given by II and III converge similarly to (3.7). Therefore, (3.5) is proved for $l + 1$ and the result follows. \square

Corollary 1. When $\frac{\log \alpha}{\log p}$ is not an integer, i.e. $Q_p^{L^*+1} < \bar{a} < Q_p^{L^*}$, we have

$$\mathbb{P}(L_N = L^* \text{ for } N \text{ large enough}) = 1.$$

Proof. This is a direct consequence from Lemma 1. \square

Lemma 2. Assume $L^* \neq 0$. When $\frac{\log \alpha}{\log p}$ is not an integer, we have for any $\epsilon > 0$,

$$\sum_{N \geq 1} \mathbb{P}\left(|\hat{Q}_{N,p}^{L_N} - Q_p^{L^*}| > \epsilon\right) < +\infty.$$

Proof. Firstly, we make a trivial decomposition:

$$\mathbb{P}\left(|\hat{Q}_{N,p}^{L_N} - Q_p^{L^*}| > \epsilon\right) = \mathbb{P}\left(\hat{Q}_{N,p}^{L_N} - Q_p^{L^*} > \epsilon\right) + \mathbb{P}\left(Q_p^{L^*} - \hat{Q}_{N,p}^{L_N} > \epsilon\right). \quad (3.8)$$

Recall, that $\hat{Q}_{N,p}^{L_N+1}$ is the first quantile estimation which lies below \bar{a} . In the first term in r.h.s of Equation (3.8), if $\hat{Q}_{N,p}^{L_N} > Q_p^{L^*} + \epsilon$ and $\hat{Q}_{N,p}^{L_N+1} \leq \bar{a}$, then there is no $\hat{Q}_{N,p}^l$ which lies in the interval $]Q_p^{L^*} - \delta, Q_p^{L^*} + \delta[$ with $\delta = \min\{\epsilon, Q_p^{L^*} - \bar{a}\} > 0$. So $\{\hat{Q}_{N,p}^{L_N} - Q_p^{L^*} > \epsilon\}$ implies $\{|\hat{Q}_{N,p}^{L_N} - Q_p^{L^*}| > \delta\}$ and we have

$$\mathbb{P}\left(\hat{Q}_{N,p}^{L_N} - Q_p^{L^*} > \epsilon\right) \leq \mathbb{P}\left(|\hat{Q}_{N,p}^{L_N} - Q_p^{L^*}| > \delta\right).$$

Next, we make another decomposition:

$$\mathbb{P}\left(Q_p^{L^*} - \hat{Q}_{N,p}^{L_N} > \epsilon\right) \leq \mathbb{P}\left(Q_p^{L^*} - \hat{Q}_{N,p}^{L_N} > \epsilon, |\hat{Q}_{N,p}^{L^*} - Q_p^{L^*}| \leq \epsilon\right) + \mathbb{P}\left(|\hat{Q}_{N,p}^{L^*} - Q_p^{L^*}| > \epsilon\right).$$

On the joint event in the first probability in the above r.h.s. inequality, we must have $\hat{Q}_{N,p}^{L_N} < \hat{Q}_{N,p}^{L^*}$, and consequently $\hat{Q}_{N,p}^{L^*+1} > \bar{a}$ (by definition of $\hat{Q}_{N,p}^{L_N}$ as the last quantile estimation above \bar{a}). Thus, it follows that

$$\mathbb{P}\left(Q_p^{L^*} - \hat{Q}_{N,p}^{L_N} > \epsilon, |\hat{Q}_{N,p}^{L^*} - Q_p^{L^*}| \leq \epsilon\right) \leq \mathbb{P}\left(|\hat{Q}_{N,p}^{L^*+1} - Q_p^{L^*+1}| > \bar{a} - Q_p^{L^*+1}\right).$$

We are able to conclude the proof by collecting the above results and using Lemma 1 with $l = L^*$, $l = L^* + 1$ and various $\epsilon > 0$. \square

Lemma 3. When $\frac{\log \alpha}{\log p}$ is not an integer, we have for any $\epsilon > 0$

$$\sum_{N \geq 1} \mathbb{P} \left(|\hat{r}_N(\hat{Q}_{N,p}^{L_N}) - r(Q_p^{L^*})| > \epsilon \right) < +\infty.$$

Consequently, $\hat{r}_N(\hat{Q}_{N,p}^{L_N})$ converges to $r(Q_p^{L^*})$ almost surely as $N \rightarrow +\infty$.

Proof. Assume first that $L^* \geq 1$. We decompose each probability using the notation of Assumption 3:

$$\begin{aligned} & \mathbb{P} \left(\left| \hat{r}_N(\hat{Q}_{N,p}^{L_N}) - r(Q_p^{L^*}) \right| > \epsilon \right) \\ & \leq \mathbb{P} \left(\left| \hat{r}_N(\hat{Q}_{N,p}^{L_N}) - r(\hat{Q}_{N,p}^{L_N}) \right| > \epsilon/2 \right) + \mathbb{P} \left(\left| r(\hat{Q}_{N,p}^{L_N}) - r(Q_p^{L^*}) \right| > \epsilon/2 \right) \\ & \leq \mathbb{P} \left(\left| \hat{r}_N(\hat{Q}_{N,p}^{L_N}) - r(\hat{Q}_{N,p}^{L_N}) \right| > \epsilon/2, \hat{Q}_{N,p}^{L_N} \in J_{L^*} \right) \\ & \quad + \mathbb{P} \left(\hat{Q}_{N,p}^{L_N} \notin J_{L^*} \right) + \mathbb{P} \left(\left| r(\hat{Q}_{N,p}^{L_N}) - r(Q_p^{L^*}) \right| > \epsilon/2 \right). \end{aligned} \tag{3.9}$$

The first term in the above r.h.s. is bounded by $\sup_{q \in J_{L^*}} c(q, N, \epsilon/2)$ (arguing as in the proof of Lemma 1), thus it forms a convergent series owing to Assumption 3; the second term gives also a convergent series in view of Lemma 2; the last term is handled as the second, by noting that $r(q)$ is continuous at $q = Q_p^{L^*}$ (Assumption 1). Now consider the case $L^* = 0$ and write

$$\mathbb{P} \left(\left| \hat{r}_N(\hat{Q}_{N,p}^{L_N}) - r(Q_p^{L^*}) \right| > \epsilon \right) \leq \mathbb{P} \left(\left| \hat{r}_N(\hat{Q}_{N,p}^0) - r(Q_p^0) \right| > \epsilon, L_N = 0 \right) + \mathbb{P}(L_N \neq 0).$$

The convergence of the series formed by the first probability term in the above r.h.s. directly follows from Assumption 3. Moreover, by definition of L_N and since $L^* = 0$, $\{L_N \neq 0\} \subset \{\hat{Q}_{N,p}^1 > \bar{a}\} \subset \{|\hat{Q}_{N,p}^1 - Q_p^1| > \bar{a} - Q_p^1 > 0\}$: then we conclude by Lemma 1 with $l = 1$. \square

Proof of Theorem 10, when $\log \alpha / \log p$ is not an integer. This is a direct result from Corollary 1 and Lemma 3. \square

Next, we prove the convergence when $\log \alpha / \log p$ is an integer. This case needs to be dealt with separately as we no longer have almost sure convergence of L_N to L^* . When $\alpha = p^{L^*}$, the estimator can be expressed as

$$\hat{\alpha}_N = 1_{\{L_N = L^* - 1\}} \hat{r}_N(\hat{Q}_{N,p}^{L^* - 1}) p^{L^* - 1} + 1_{\{L_N = L^*\}} \hat{r}_N(\hat{Q}_{N,p}^{L^*}) p^{L^*} + 1_{\{L_N \notin \{L^* - 1, L^*\}\}} \hat{r}_N(\hat{Q}_{N,p}^{L_N}) p^{L_N}.$$

Then, the error of our estimator is given as:

$$\begin{aligned} \hat{\alpha}_N - p^{L^*} &= 1_{\{L_N = L^* - 1\}} \left(\hat{r}_N(\hat{Q}_{N,p}^{L^* - 1}) - p \right) p^{L^* - 1} \\ & \quad + 1_{\{L_N = L^*\}} \left(\hat{r}_N(\hat{Q}_{N,p}^{L^*}) - 1 \right) p^{L^*} \\ & \quad + 1_{\{L_N \notin \{L^* - 1, L^*\}\}} \left(\hat{r}_N(\hat{Q}_{N,p}^{L_N}) p^{L_N} - p^{L^*} \right). \end{aligned} \tag{3.10}$$

Lemma 4. If $\alpha = p^{L^*}$, we have $\mathbb{P}(L_N \in \{L^* - 1, L^*\}, \text{ as } N \text{ is large enough}) = 1$.

Proof. In any case $Q_p^{L^* + 1} < \bar{a}$: since $\hat{Q}_{N,p}^{L^* + 1}$ converges a.s. to $Q_p^{L^* + 1}$ (Lemma 1), by the definition of L_N we have $L_N + 1 \leq L^* + 1$ as $N \rightarrow +\infty$. Similarly, provided that $L^* > 1$, $\hat{Q}_{N,p}^{L^* - 1}$ converges a.s. to $Q_p^{L^* - 1} > \bar{a}$, thus $L_N \geq L^* - 1$ as $N \rightarrow +\infty$. \square

Lemma 5. For $l \in \{L^* - 1, L^*\} \cap \mathbb{N}$ and any $\epsilon > 0$, we have

$$\sum_{N \geq 1} \mathbb{P} \left(\left| \hat{r}_N(\hat{Q}_{N,p}^l) - r(Q_p^l) \right| > \epsilon \right) < +\infty.$$

Thus for such l , $\hat{r}_N(\hat{Q}_{N,p}^l)$ converges to $r(Q_p^l)$ almost surely as $N \rightarrow +\infty$.

Proof. Similarly to (3.9), write

$$\begin{aligned} \mathbb{P}\left(\left|\hat{r}_N(\hat{Q}_{N,p}^l) - r(Q_p^l)\right| > \varepsilon\right) &\leq \mathbb{P}\left(\left|\hat{r}_N(\hat{Q}_{N,p}^l) - r(\hat{Q}_{N,p}^l)\right| > \varepsilon/2, \hat{Q}_{N,p}^l \in J_l\right) \\ &\quad + \mathbb{P}\left(\hat{Q}_{N,p}^l \notin J_l\right) + \mathbb{P}\left(\left|r(\hat{Q}_{N,p}^l) - r(Q_p^l)\right| > \varepsilon/2\right). \end{aligned}$$

If $l = 0$, the two last probabilities on the above r.h.s. are 0, since $\hat{Q}_{N,p}^0 = Q_p^0 = +\infty$, while the first probability forms a convergent series in view of Assumption 3.

If $l > 0$, we argue as in the proof of Lemma 1, applying Assumption 3, Lemma 1 and the local continuity of $r(\cdot)$. \square

Proof of Theorem 10, when $\log \alpha / \log p$ is an integer. In the r.h.s. of Equation (3.10), applying Lemma 5 for $l = L^* - 1$ and $l = L^*$, we get that $\hat{r}_N(\hat{Q}_{N,p}^{L^*-1}) - p = \hat{r}_N(\hat{Q}_{N,p}^{L^*-1}) - r(Q_p^{L^*-1})$ converges to zero almost surely and that $\hat{r}_N(\hat{Q}_{N,p}^{L^*}) - 1 = \hat{r}_N(\hat{Q}_{N,p}^{L^*}) - r(Q_p^{L^*})$ converges to zero almost surely, respectively. Thus, applying Lemma 4 completes the proof. \square

Finally, we provide some discussion on the assumptions made to prove Theorem 10.

- Assumption 1 is required for the continuity of $g_p(\cdot)$ and $r(\cdot)$ at quantile levels Q_p^l . In [DFJN14], this type of condition is also required for Assumption 2 to hold under some conditions.
- The first parts of Assumptions 2 and 3 are related to deviation inequalities of various statistics of ergodic Markov chains. Such inequalities have been shown for instance in [GO02, KLM05, DFJN14] for uniformly geometrically, or high order polynomially ergodic Markov chains, when the starting point of the underlying Markov chain is either fixed or distributed with the stationary distribution. Whereas we always initialize the Markov chain at hand at a fixed point x_0 , we believe that these assumptions are still reasonable because the marginal distribution of Markov chain converges to the stationary distribution (Proposition 9).
- The second halves of Assumption 2 and 3 are satisfied as soon as some exponential-type inequalities hold locally uniformly. Such exponential-type inequalities hold true under some assumptions, see for instance [GO02, Theorem 2], [KLM05, Theorem 1] or [DFJN14, Theorems 2 and 3]. We require some local uniformity w.r.t. the parameters defining the Markov chain which is valid in the aforementioned references. Thus, we argue that our assumptions appear to be reasonable but it still requires some extra work to check these conditions for the general (possibly infinite-dimensional) Gaussian shaker.

4 Applications

In this section, we discuss the application of POP and IPS methods as presented in Subsection 2.3 to various important problems in stochastic finance. Among others, we compare the POP scheme with adaptive intermediate acceptance levels and the IPS scheme with similar adaptive levels (the IPS adaptive method is exposed in details in [CMFG12, Section 3]). We refer to them as adaptive POP and adaptive IPS. In all the following examples, to simplify the exposure and experiments, we assume that the shaking parameter ρ_h is constant w.r.t. h (see (2.8) and (2.9)). We denote this common value¹ by $\rho \in (-1, 1)$.

4.1 Model misspecification and robustness

To address the issue of model risk, we consider the Profit&Loss (PL) when the trader uses a Black-Scholes (BS) model to hedge a European call option while the true dynamics of the underlying S is given by a path-dependent volatility model. Let us suppose that there are two volatility levels $\sigma_-, \sigma_+ \in \mathbb{R}_+ \setminus \{0\}$ such that $\sigma_- < \sigma_+$. We propose a discrete-time path-dependent volatility model based on a monitoring period Δ_t (say 1 week) and monitoring dates $t_i = i\Delta_t$, wherein, if the underlying spot price drops below the average of previous four monitored prices, the level of volatility becomes σ_+ , otherwise it remains

¹The choice of non-constant ρ_h may be guided by the apriori knowledge that some Gaussian components of X may have more or less importance on the rare event occurrence. We do not elaborate further in this direction and leave it for future research.

constant at σ_- . The asset price is given as

$$S_t = S_0 \exp\left(-\frac{1}{2}\sigma_-^2 t + \sigma_- W_t\right), \quad t < t_4, \quad (4.1)$$

$$S_t = \begin{cases} S_{t_i} \exp\left(-\frac{1}{2}\sigma_-^2 (t - t_i) + \sigma_- (W_t - W_{t_i})\right) \\ \quad \text{if } S_{t_i} \geq \frac{1}{4} \sum_{k=1}^4 S_{t_i-k} \text{ and } t_i \leq t < t_{i+1}, \\ S_{t_i} \exp\left(-\frac{1}{2}\sigma_+^2 (t - t_i) + \sigma_+ (W_t - W_{t_i})\right) \\ \quad \text{if } S_{t_i} < \frac{1}{4} \sum_{k=1}^4 S_{t_i-k} \text{ and } t_i \leq t < t_{i+1}, \end{cases} \quad \text{when } t \geq t_4.$$

This model corresponds to the usual empirical observation that the underlying volatility is higher when price falls. This is a discrete version of the continuous time model proposed by [Guy14]. Furthermore, we assume the risk-free interest rate to be zero. The resulting model is complete in the sense that any square integrable payoff written on S can be replicated by a self-financing strategy (see [HR98] for complete models with stochastic volatility). The above model is directly written under the risk-neutral measure \mathbb{P} .

Meanwhile, we assume that the trader uses a BS model in which the volatility is constant and equal to σ_- . The call option maturity is $T > 0$, and $[0, T]$ is the trading period under consideration. As the trader assumes a BS model, he/she uses the BS formula to perform delta hedging. For our numerical study, we take $T = 1, n = 50$ Δ_t is s.t. $n\Delta_t = T$) and assume that the trader makes a rebalancing after every period of $5\Delta_t$. At times $t_{5\Delta_t j}, 0 \leq j < 10$, the trader holds δ_j assets, so at the maturity his/her PL is given by

$$PL_{\text{trader}} := \mathbb{E}_{\text{trader}}[(S_T - K_{\text{strk}})_+] + \sum_{j=0}^9 \delta_j (S_{5\Delta_t(j+1)} - S_{5\Delta_t j}) - (S_T - K_{\text{strk}})_+$$

where δ_j is given from the BS-Delta formula with volatility σ_- and spot $S_{5\Delta_t j}$.

Since the realized volatility is higher than the one used for hedging, the trader may underhedge the option (in continuous time hedging, see [EJS98] for precise results) and may incur large losses due to the model risk. Thus, we wish to estimate the probability $\mathbb{P}(PL_{\text{trader}} \leq L)$. In the model of (4.1), we set $S_0 = K_{\text{strk}} = 10, \sigma_- = 0.2, \sigma_+ = 0.27$ and take $L = -2.4$. In our IPS and POP methods, we create the intermediate levels as $L_k := kL/5, k = 1, 2, 3, 4, 5$. The crude Monte Carlo method with 5×10^8 simulations provides a 99% confidence interval for this probability as $[2.93, 3.34] \times 10^{-6}$. The mean estimates and empirical standard deviations of non-adaptive and adaptive estimators based on IPS and POP methods using 100 macro-runs are given in Tables 4.1.1-4.1.2. The adaptive algorithms are performed with parameter $p = 10\%$ for the intermediate conditional probability. From Table 4.1.1, it is clear that POP based estimators provide accurate estimates with a lower standard deviation than IPS based estimators, both schemes being in their non-adaptive versions. In Table 4.1.2, results with adaptive algorithms are compared, here again POP method yields smaller variances in the estimation.

When comparing standard deviations of Table 4.1.1 and Table 4.1.2, we observe that they are similar (for a given shaker parameter ρ). The reader may think that seemingly adaptive versions do not provide any benefit. One should recall that, the non-adaptive versions require a priori choices of levels (here we choose them by preliminary experiments to have roughly equal conditional probabilities) while with the adaptive version we do not need this kind of a priori knowledge and still we obtain efficient estimators. Actually the advantage really stems from the fully adaptive tuning of levels, which is made possible without deteriorating the variances.

In Figure 4.1.1 (top), we investigate the dependence of the standard deviation (of each conditional probability computed with POP method) w.r.t. the shaking parameter ρ and the level l . We do not report results for $l = 1$ (no rejection) since independent sampling ($\rho = 0$) is obviously the best. We observe that the impact of ρ on the variance is significant: the optimal parameter ρ_l^* minimizing the variance changes from one level to another and ρ_l^* increases with l (the shaking has to become slighter with increasing rarity of the event). These features are easily explained heuristically. Complementary to this, we plot in Figure 4.1.1 (bottom) the rejection rate, which also depends on ρ and l . It appears that ρ_l^* depends very much on l whereas the associated rejection rate remains rather stable and ranges from 60% to 80%. Since we observe a quick explosion of standard deviation when ρ is too close to 1, we recommend to take ρ such that the rejection rate is above 60% rather than below 60%, to be on the safe side when a finer optimization of ρ is not possible. We shall take it as a rule of thumb for further experiments.

Lastly, in Figure 4.1.2 we report statistics on standard deviation and rejection rate for the adaptive POP method. We observe similar features as in Figure 4.1.1. Since different intermediate levels in the adaptive POP method are correlated, we first run the beginning level to get corresponding value of ρ

minimizing the standard deviation. Then, we use this fixed value for the corresponding level in the search of optimal ρ of the next level and so on. We can see in Figure 4.1.2 that with all the values of ρ chosen in this way, the best standard deviation among the final estimators is around 1.5×10^{-7} , which is about 62.5% of standard deviation of the estimator with a constant $\rho = 0.9$ for all the levels.

	IPS			POP		
	mean ($\times 10^{-6}$)	std. ($\times 10^{-7}$)	std./mean	mean ($\times 10^{-6}$)	std. ($\times 10^{-7}$)	std./mean
$\rho = 0.9$	3.10	5.29	0.17	3.13	2.07	0.07
$\rho = 0.7$	3.23	13.3	0.41	3.11	3.98	0.13
$\rho = 0.5$	2.79	25.9	0.93	3.18	8.44	0.27

Table 4.1.1: Estimators of $\mathbb{P}(PL_{trader} \leq L)$ (mean) for $L = -2.4$ with empirical standard deviation (std.) for non-adaptive IPS and POP methods based on 100 algorithm macro-runs. Each intermediate level estimator in both methods is based on $M = N = 10^5$ simulations.

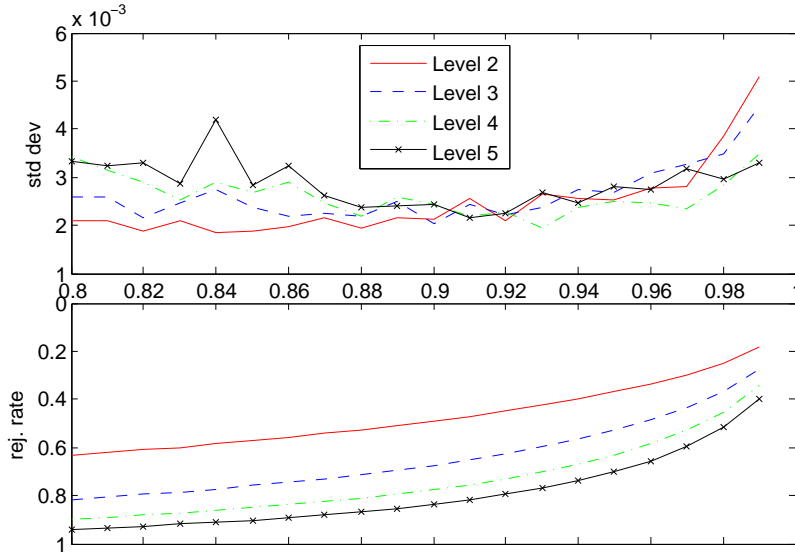


Figure 4.1.1: POP method, standard deviation (std. dev.) of each conditional probability estimator and corresponding rejection rate (rej. rate), based on 100 macro-runs, for different values of ρ .

	Adaptive IPS			Adaptive POP		
	mean ($\times 10^{-6}$)	std. ($\times 10^{-7}$)	std./mean	mean ($\times 10^{-6}$)	std. ($\times 10^{-7}$)	std./mean
$\rho = 0.9$	3.06	4.95	0.16	3.18	2.42	0.08
$\rho = 0.7$	2.98	11.1	0.37	3.10	3.71	0.12
$\rho = 0.5$	2.45	23.6	0.96	3.06	7.27	0.24

Table 4.1.2: Estimators of $\mathbb{P}(PL_{trader} \leq L)$ (mean) for $L = -2.4$ with empirical standard deviation (std.) for adaptive IPS and POP methods ($p = 10\%$) based on 100 algorithm macro-runs. Each intermediate level estimator in both methods is based on $M = N = 10^5$ simulations.

4.2 Measuring default probabilities in credit portfolios

In this subsection, we consider a credit portfolio based on asset values of N_0 different firms. Let us suppose $(\Omega, \mathcal{F}, \mathbb{P})$ is a probability space where $\{W_1, W_2, \dots, W_{N_0}, W\}$ are \mathbb{P} -standard Brownian motions with constant correlations. We denote by $\{\mathcal{F}_t, t \geq 0\}$ the \mathbb{P} -augmentation of the filtration generated by $\{W_1, W_2, \dots, W_{N_0}, W\}$. As in [CFV09], we assume that the dynamics of asset values is given by the following system of stochastic differential equations

$$dS_i(t) = rS_i(t)dt + \sigma(t)S_i(t)dW_i(t), \quad i = 1, \dots, N_0, \quad (4.2)$$

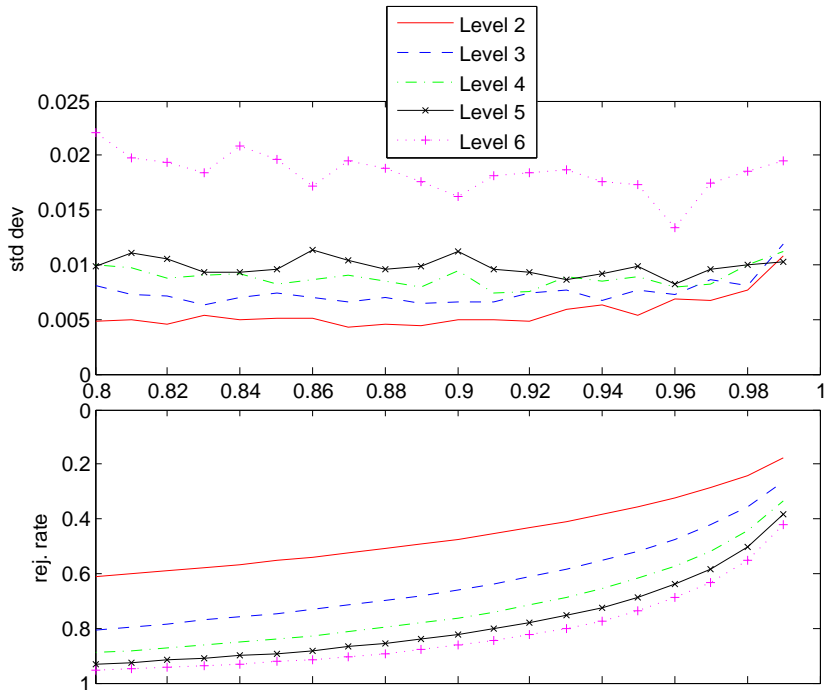


Figure 4.1.2: Adaptive POP method ($p = 10\%$). Standard deviation (*std dev.*) and corresponding rejection rate (*rej. rate*), based on 100 macro-runs, of each quantile estimator $(\hat{Q}_{N,p}^l)_{1 \leq l \leq L^* - 1}$ and last level occupation measure estimator $\hat{r}_N(\hat{Q}_{N,p}^{L^*})$, for different values of ρ .

where r is the risk-free interest rate, the common stochastic volatility factor $\sigma(t)$ is modeled by a Cox-Ingersoll-Ross model satisfying

$$d\sigma(t) = \kappa(\bar{\sigma} - \sigma(t))dt + \gamma\sqrt{\sigma(t)}dW_t, \quad (4.3)$$

where $\kappa, \bar{\sigma}$ and γ are positive constants. Brownian motions are correlated as follows:

$$d\langle W_i, W_j \rangle_t = \rho^W dt, i \neq j, \quad d\langle W_i, W \rangle_t = \rho^\sigma dt, \quad i = 1, \dots, N_0.$$

Next, we consider the default boundary for each firm i to be a fixed value $B_i \in \mathbb{R}_+$. The time of default for firm i in the portfolio is defined as

$$\tau_i(B_i) := \inf \{t \geq 0 : S_i(t) \leq B_i\}.$$

The current methods would directly adapt to the case where the default level B_i is replaced by a time-dependent deterministic function.

In order to evaluate different tranches in a credit portfolio, we are interested to calculate the probability that at least L defaults occur before T , i.e.

$$P(L) = \mathbb{P} \left(\sum_{i=1}^{N_0} \mathbf{1}_{\{\tau_i(B_i) \leq T\}} > L \right) = \mathbb{P} \left(\sum_{i=1}^{N_0} \mathbf{1}_{\{\min_t S_i(t) \leq B_i\}} > L \right), \quad 0 < L < N_0.$$

Due to the path dependency of the default scheme and of the stochastic volatility model, it is not clear how to find the optimal change of measure to perform importance sampling to estimate $P(L)$, which motivates the use of alternative simulation techniques.

A different IPS-based method has been proposed by Carmona et al. [CFV09] in order to compute $P(L)$ (see also [CC10] for application of this method in other models). We would like to emphasize the main difference between the former IPS approach and our work. The underlying Markov chain for their IPS method is simply the time-discretization of the $(2N_0 + 1)$ -dimensional process $(S_i, \min S_i, \sigma, 1 \leq i \leq N_0)$. This poses several difficulties for the authors. Firstly, one needs to exhibit a *good* potential function for the selection of particles which is very delicate because of the high-dimensionality of the problem. Secondly, one needs to choose an appropriate discretization time step Δ_t . This is also intricate, since on the one hand a large number of time steps may help in better selection of the particles in rarer and

rarer regions, but on the other hand it slows down the statistical convergence of IPS (the resampling adds noise in the estimation). In our case, we directly consider Markov chains valued on path space, thus avoiding the delicate problem of choosing the time step Δ_t and the high-dimensional potential function (in our numerical experiments, we have observed that Δ_t has no significant impact on the convergence of our versions of IPS-POP methods when it is small enough). Thus, our approach and results are rather different from those of Carmona et al. [CFV09]. These differences are mainly due to the fact that our method does not require any Markovian assumption on $(S_i, \min S_i, \sigma, 1 \leq i \leq N_0)$ and could be directly applied to path-dependent models (whenever useful).

In order to express $P(L)$ in the form of (2.6), we need to create a cascade of decreasing sets $\{A_k\}_{1 \leq k \leq n}$. We define $Z \in \mathbb{R}^{N_0}$ whose i -th component is the minimum of $(S_i(t)/S_i(0))_t$ and we set

$$A_k := \left\{ z \in \mathbb{R}^{N_0} : \sum_{i=1}^{N_0} \mathbf{1}_{\{z_i \times (B_i + \frac{k}{n}(S_i(0) - B_i) \leq B_i\}} > L \right\}, \quad 1 \leq k \leq n,$$

which consists in progressively decreasing the default trigger levels. The nested set condition (2.5) is then fulfilled. Then, we apply POP and IPS methods to compute all the conditional probabilities $\mathbb{P}(Z \in A_{k+1} | Z \in A_k)$.

Remark 4.1. *Another natural way to create the nested sequence of sets is to progressively increase the number of defaults:*

$$\tilde{A}_k := \left\{ z \in \mathbb{R}^{N_0} : \sum_{i=1}^{N_0} \mathbf{1}_{\{z_i S_i(0) \leq B_i\}} > \frac{k}{n} L \right\}, \quad 1 \leq k \leq n.$$

We empirically observe that the choice is in general less accurate. Although we have proven that POP method will eventually converge in all the finite-dimensional cases, how to construct intermediate sets to achieve the best convergence rate remains to be explored.

To perform numerical experiments in the considered model of (4.2)-(4.3), we fix the parameter values as in Table 4.2.1. Further, we fix the total number of firms $N_0 = 125$ and threshold level $B_i = B$ for

$S_i(0)$	r	ρ^W	$\sigma(0)$	κ	$\bar{\sigma}$	γ	ρ^σ
90	0.06	0.10	0.4	3.5	0.4	0.7	-0.06

Table 4.2.1: *Parameters for credit portfolio model*

some $B > 0$. Next, we estimate the default probability $P(L)$ for different values of L over $T = 1$ with 50 time steps per year in the Euler discretization scheme of Deelstra and Delbaen [DD98]. For $L = 100$ and $B = 36$, the crude Monte Carlo estimator of default probability with 3×10^9 sample paths has a 99% confidence interval as $[4.92, 5.13] \times 10^{-6}$. In Table 4.2.2, we report the results for IPS and POP based estimators for fixed $n = 5$ levels. For different values of the shaking parameter ρ , it is clear that POP based estimator provides more accurate results than IPS method. In Figure 4.2.3, using POP based estimator with fixed number of levels $n = 20$ and 10^4 simulations at each level, we also report $P(L)$ for different levels of default threshold B based on different values of L . Remarkably, it allows to compute very low probabilities (up to 10^{-24}).

Next, we implement IPS and POP based estimators with an adaptive number of levels as discussed in Section 3.2. To estimate $P(L)$, we fix the conditional probability $\mathbb{P}(Z \in A_{k+1} | Z \in A_k)$ of each, except the last, intermediate level (to be estimated) to $p = 10^{-1}$. In Table 4.2.3, we can see that both IPS and POP based estimates are within the reported confidence interval of the true value for $\rho = 0.9$. However, the corresponding POP based estimator has a lower standard deviation. When comparing with Table 4.2.2, variances are roughly unchanged by using the adaptive scheme, but the advantage of this version is to have a fully simulation-based scheme where we do not need to pre-specify the acceptance threshold levels.

In Figures 4.2.1 and 4.2.2, we report different detailed statistics w.r.t. the level and the shaking parameter (non-adaptive POP method: standard deviation and rejection rate; adaptive POP method: standard deviation of quantile and occupation measure along with rejection rate). We observe similar behaviors as in the first example of Subsection 4.1. For rare regions (levels $l = 3, 4, 5$), the parameter ρ_l^* minimizing the standard deviation of the l -th conditional probability seems to be associated to rejection rate of 70%. We believe that this (so far empirical) invariance relation between best shaking parameters

(for minimal variances) and rejection rate of about 70% – 80% should give a way to adaptively choose ρ . This will be further investigated in the future. Again we see that for the adaptive POP method, with different values of ρ minimizing standard deviation in each intermediate level, the standard deviation of the final adaptive estimator of the rare event probability is about 60% of that with a constant $\rho = 0.9$.

The above methodology can also be applied directly to better account for the systemic risk and the illiquidity issues, for example, in the settings of [FI14] where inter-bank lending is modeled by a system of coupled diffusion processes in a mean-field regime.

	IPS			POP		
	mean ($\times 10^{-6}$)	std. ($\times 10^{-6}$)	std./mean	mean ($\times 10^{-6}$)	std. ($\times 10^{-6}$)	std./mean
$\rho = 0.9$	5.82	4.37	0.75	5.01	0.80	0.16
$\rho = 0.7$	4.92	1.56	0.32	4.99	1.02	0.20
$\rho = 0.5$	4.79	3.80	0.79	5.02	1.94	0.39

Table 4.2.2: Estimators of default probability (mean) for $L = 100$ and $B = 36$ with empirical standard deviation (std.) for non-adaptive IPS and POP methods based on 100 algorithm macro-runs. Each intermediate level estimator in both methods is based on $M = N = 10^4$ simulations.

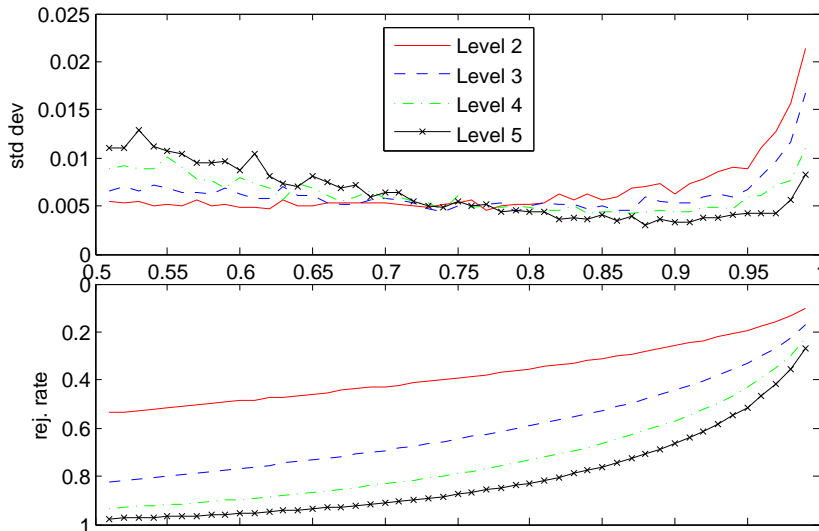


Figure 4.2.1: POP method, standard deviation (std. dev.) of each conditional probability estimator and corresponding rejection rate (rej. rate), based on 100 macro-runs, for different values of ρ .

	Adaptive IPS			Adaptive POP		
	mean ($\times 10^{-6}$)	std. ($\times 10^{-6}$)	std./mean	mean ($\times 10^{-6}$)	std. ($\times 10^{-6}$)	std./mean
$\rho = 0.9$	4.93	1.91	0.39	5.16	0.85	0.16
$\rho = 0.7$	5.42	1.58	0.29	4.98	1.02	0.20
$\rho = 0.5$	6.40	5.00	0.78	5.35	2.05	0.38

Table 4.2.3: Estimators of default probability (mean) for $L = 100$ and $B = 36$ with empirical standard deviation (std.) for adaptive IPS and POP methods ($p = 10\%$) based on 100 algorithm macro-runs. Each intermediate level estimator in both methods is based on $M = N = 10^4$ simulations.

4.3 Fractional Brownian motion for modeling volatility

The fractional Brownian motion (fBM) $(B_t^{(H)})_{t \in \mathbb{R}}$ with Hurst exponent $H \in (0, 1)$ was defined in Example 3. For $H \neq 1/2$, it is well known that $B^{(H)}$ is not a semimartingale. In order to represent fBM, we make use of the Mandelbrot and van Ness representation of $B^{(H)}$ as an integral w.r.t. a standard Brownian

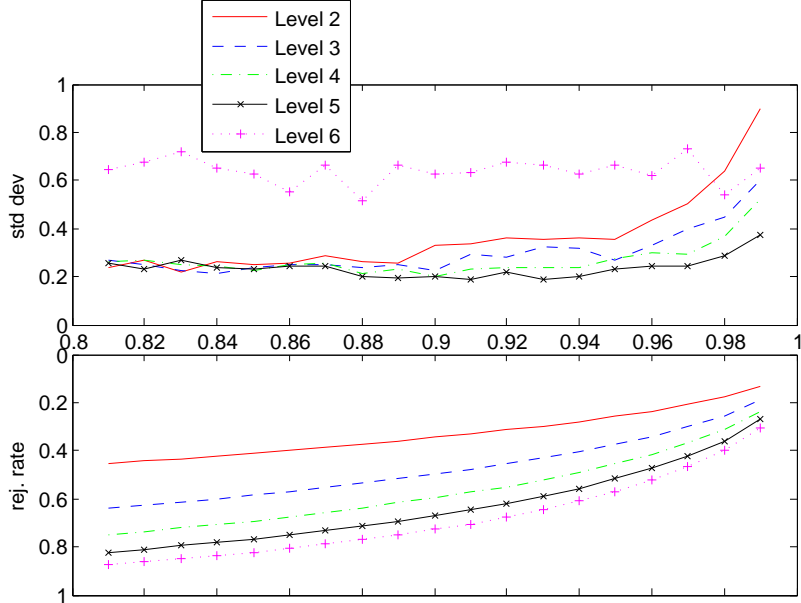


Figure 4.2.2: Adaptive POP method ($p = 10\%$). Standard deviation (std. dev.) and corresponding rejection rate (rej. rate), based on 100 macro-runs, of each quantile estimator $(\hat{Q}_{N,p}^l)_{1 \leq l \leq L^* - 1}$ and last level occupation measure estimator $\hat{r}_N(\hat{Q}_{N,p}^{L^*})$, for different values of ρ . The std. dev. of occupation measure estimator has been scaled by 10 for easier comparison.

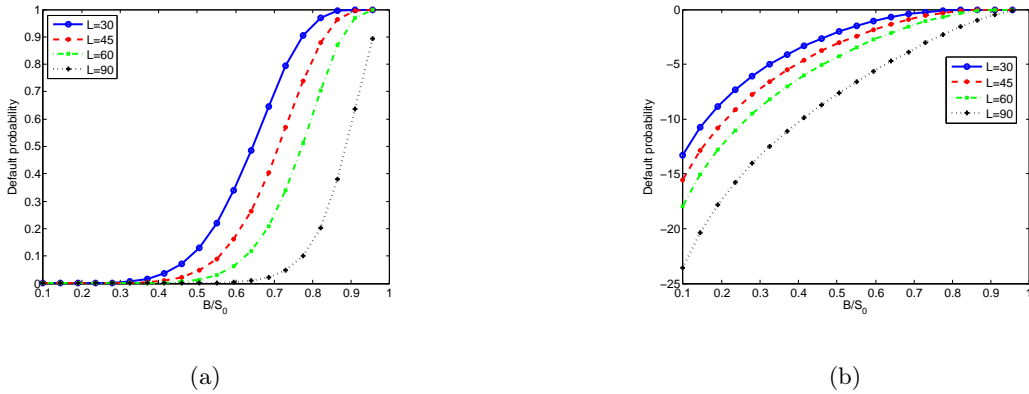


Figure 4.2.3: Plot (a) and log-plot (b) of default probabilities for varying B/S_0 .

motion B :

$$B_t^{(H)} = C_H \left[\int_{-\infty}^t [(t-s)^{H-\frac{1}{2}} - (-s)_+^{H-\frac{1}{2}}] dB_s \right] \quad \text{with} \quad C_H = \sqrt{\frac{2H\Gamma(3/2-H)}{\Gamma(H+1/2)\Gamma(2-2H)}}.$$

Recently, Gatheral and co-authors [GJR14] have successfully employed fBM to model the market observed volatility of stock indexes. In order to demonstrate the application of POP method for models which are not necessarily based on semimartingales, we consider the fractional SABR (fSABR) model proposed by Gatheral et al. [GJ14]. In fSABR, the underlying asset dynamics are given by

$$\frac{dS_t}{S_t} = \sigma_t dZ_t, \quad \sigma_t = \bar{\sigma} \exp\left(-\frac{1}{2}\alpha^2 t^{2H} + \alpha B_t^{(H)}\right), \quad (4.4)$$

where Z_t is a standard Brownian motions with instantaneous correlation ρ^{BZ} with B_t (i.e. $d\langle B, Z \rangle_t = \rho^{BZ} dt$). Under the model (4.4), we use POP method to estimate the small-strike tail asymptotic slope of implied variance

$$\beta_L := \limsup_{x \rightarrow -\infty} \frac{I^2(x)T}{|x|} \quad (4.5)$$

ρ^{BZ}	$\alpha = 0.5$				$\alpha = 1.0$			
	$H = 0.15$	$H = 0.25$	$H = 0.75$	$H = 0.9$	$H = 0.15$	$H = 0.25$	$H = 0.75$	$H = 0.9$
-0.3	2.6133	2.5515	2.8058	2.9753	0.8251	0.8267	0.9211	0.9632
-0.5	2.4222	2.3823	2.6733	2.8715	0.7905	0.7913	0.8950	0.9449
-0.7	2.2593	2.2042	2.5465	2.7918	0.7597	0.7591	0.8686	0.9277
-0.9	2.1235	2.0653	2.4339	2.6919	0.7325	0.7297	0.8449	0.9113

Table 4.3.1: Estimates of critical negative moment \tilde{q} in fSABR model (4.4) using POP method.

where $I(x)$ is the BS implied volatility of a Vanilla option on S with log-moneyness $x = \log K/S_0$ and maturity T . The estimate of the slope can be, in turn, used to obtain estimate of the critical negative moment $\tilde{q} := \sup\{q : \mathbb{E}[S_T^{-q}] < \infty\}$ from the well-known moment formula [Lee04, Theorem 3.4]

$$\tilde{q} = 1/2\beta_L + \beta_L/8 - 1/2. \quad (4.6)$$

We work with the following parameter values: $S_0 = 40, \bar{\sigma} = 0.235, r = 0, T = 1.0$ and $\alpha = 0.5, 1.0$. We use intermediate levels at $[32.5, 25, 19.5, 14, 10.5, 7, 5, 3, 2, 1]$ in the POP method (shaking parameter value = 0.9) with 10^5 simulations² at each level in order to estimate the implied volatility at different values of the log-moneyness. The output values are based on 100 independent algorithm macro-runs. We observe on Figure 4.3.1 that the squared implied volatilities seemingly behave linearly for large negative values of the log-moneyness, which suggests that the lim sup in (4.5) is presumably a limit (see Remark 4.2 below for a related discussion).

In light of (4.5), we could use the most extreme value of the implied variance $I^2(x_{\min})$ (corresponding to $x_{\min} = -3.75$ in Figure 4.3.1) in order to evaluate β_L . Instead of doing so, we compute the slope β_L by linear interpolation of the two most extreme implied variances $I^2(x_{\min})$ and $I^2(x_{\min} + \Delta x)$. We observe that following one or the other procedure has no significant impact on the results. This yields the estimates of \tilde{q} in Table 4.3.1. From our numerical results, we can observe that \tilde{q} increases with the value of the correlation ρ^{BZ} in the model. Conversely, \tilde{q} decreases with the value of the parameter α . There is no global monotonicity appearing from the relationship between \tilde{q} and value of $H \in (0, 1)$. On the other hand, one does see (as expected) the emergence of two different regimes for $H < 1/2$ and $H > 1/2$. These observations suggest that it is possible - at least in theory - to calibrate the value of one of these model parameters from extreme implied volatility estimates, for example by using POP method. Moreover, the plots in 4.3.1 indicate a ‘tilting’ effect of the correlation parameter ρ^{BZ} on the whole smile curve, analogous to that in standard stochastic volatility models based on Brownian motion. This indicates that under the fractional model (4.4), too, the appropriate value of the correlation parameter can be reasonably inferred from market implied volatilities by observing the slopes of the left- and right hand sides of the smile.

Remark 4.2. While the formulas (4.5)-(4.6) always hold when β_L is defined via a lim sup, it is interesting to notice that there is a (large) class of models for which the limsup can actually be updated to a true limit, thus providing the full asymptotic equivalence $I^2(x)T \sim |x|$ as $x \rightarrow -\infty$. This class is fully characterized in Gulisashvili [Gul12, Theorem 3.5]. Recall that a positive measurable function f defined on some neighborhood of infinity is said to be regularly varying with index $\alpha \in \mathbb{R}$ if for every $\lambda > 0$, $\frac{f(\lambda x)}{f(x)} \rightarrow \lambda^\alpha$ as $x \rightarrow +\infty$. Furthermore, the class of Pareto-type functions is introduced in [Gul12]. Let g be positive measurable functions defined on $(0, c)$ for some $c > 0$: if there exist two functions g_1 and g_2 that are regularly varying with index α and such that $g_1(x^{-1}) \leq g(x) \leq g_2(x^{-1})$ for all $0 < x < c$, then we say that the function g is of weak Pareto-type near zero with index α .

Gulisashvili [Gul12] proves the following: under the assumption $0 < \tilde{q} < \infty$, the asymptotic formula

$$\lim_{x \rightarrow -\infty} \frac{I^2(x)T}{|x|} = \beta_L \quad (4.7)$$

holds if and only if the following condition is satisfied:

- i) The put price function $P(K) = \mathbb{E}[(K - S_T)^+]$, $K > 0$, is of weak Pareto type near zero with index $\alpha_1 = -\tilde{q} - 1$.

²We exactly simulate the skeleton of Z, B and B^H (with a step length of $T/100$) as a correlated Gaussian vector since the covariance matrix of this vector can be computed explicitly.

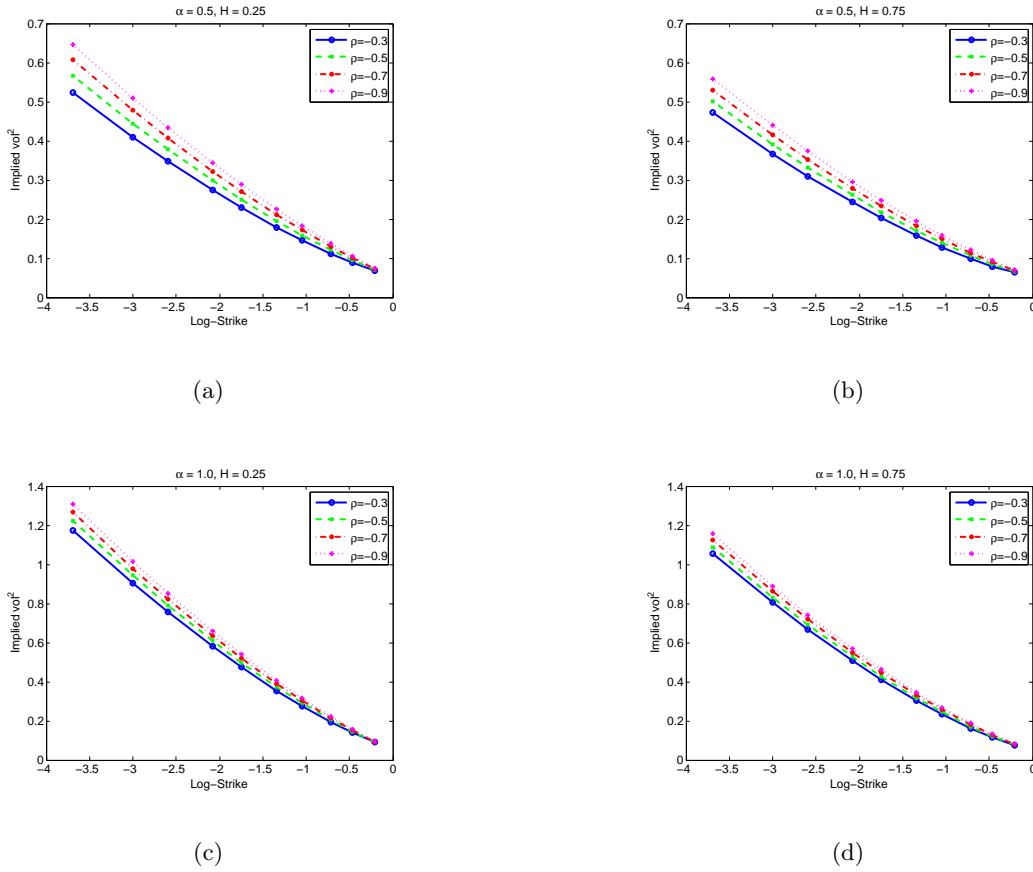


Figure 4.3.1: Squared implied volatility as a function of log-strike in the fSABR model (4.4).

It is possible to relate the property *i*) in a more direct way to the distribution of the stock price: condition *i*) holds for the put price if one of the following two conditions is satisfied:

- ii*) The cdf of the stock price $F(K) = \mathbb{P}(S_T \leq K)$ is of weak Pareto type near zero with index $\alpha_2 = -\tilde{q}$.
- iii*) The density $p_T(\cdot)$ of the stock price S_T (if it exists) is of weak Pareto type near zero with index $\alpha_3 = -\tilde{q} + 1$.

The implication *iii*) \Rightarrow *i*) is proven in [Gul12], Theorem 3.11. The implication *ii*) \Rightarrow *i*) can be proven following the lines of the proofs of Theorems 3.11 and 3.7 in [Gul12].

Figure 4.3.1 suggests that squared implied volatilities behave asymptotically linearly with log-moneyness, and we can therefore conjecture that equation (4.7) holds for the fSABR model (4.4). An analysis of the cdf or the density function of the stock price, as performed in [GVZ15] for a class of models with Gaussian self-similar stochastic volatility, would allow to show that properties *ii*) and *iii*) hold true in the fSABR model. We leave such kind of investigation for future research.

4.4 Estimating sensitivities for out-of-the money options and insurance contracts for asset managers

In this example, we consider a d -dimensional Black-Scholes model in which the asset price vector $S = (S^1, S^2, \dots, S^d)$ is given as

$$\frac{dS_t^i}{S_t^i} = \mu^i dt + \sigma^i d(LW_t)^i \quad (4.8)$$

where $\sigma^i > 0$ for all $i = 1, \dots, d$, W is an d -dimensional standard Brownian motion, and L is the symmetric square root of a d -dimensional correlation matrix C , so that $LL^* = C$ (here $L = L^*$). Hereafter we assume

that the matrix C (therefore L) is invertible. Denoting by Z^i the log of S^i , one has

$$Z_T^i = Z_0^i + \left(\mu^i - \frac{1}{2}(\sigma^i)^2 \right) T + \sigma^i (LW_T)^i \quad (4.9)$$

with $Z_0^i = \log(S_0^i)$. Equation (4.8) allows to model separately the individual volatility σ^i of each asset and the correlation between the driving Brownian factors. The introduction of a volatility smile on each asset can be achieved simply by switching from constant to local volatility functions $\sigma^i(t, \cdot)$ (which can be separately calibrated to option data on each asset).

We consider a digital-style payoff written on a generalized basket, whose financial evaluation is defined by

$$\mathcal{P} := \mathbb{P}(\varphi(Z_T, \bar{a}) \geq 0)$$

where

$$\varphi(z, \bar{a}) := \sum_{i=1}^d \varepsilon_i p_i e^{z^i} - \bar{a} \quad (4.10)$$

with $p_i > 0, \varepsilon_i \in \{-1, 1\}$ and $\bar{a} \in \mathbb{R}$. This setting can cover the situation of risk management of an insurance contract (when each asset evolves with its own drift coefficient μ^i), and of course the pricing of a digital option on the basket, which corresponds to set $\mu^i = r$, where r is a risk-free interest rate. We are interested in computing the sensitivities of \mathcal{P} with respect to different model parameters, such as

- p_i in order to assess the influence of the individual weights, possibly in order to reweight the portfolio and lower the risk,
- σ^i in order to quantify the impact of individual volatilities on the tails of the basket,
- $C_{i,j} = (LL^*)_{i,j}$ for $i < j$, in order to study the effect of pair-wise correlations on the product.

In order to obtain explicit sensitivity formulas, we apply Theorem 6 with $\Phi^\theta = 1, Z^\theta = Z_T$ in the context of multidimensional Brownian motion (Example 2), where θ plays the role of one the model parameters or payoff parameters above. A direct computation shows

$$(D_t Z_T)_{i,j} = \sigma^i L_{i,j} \mathbf{1}_{t \leq T} = \Sigma_{i,j} \mathbf{1}_{t \leq T} \quad \gamma_{Z_T} = T \Sigma \Sigma^*,$$

where we denote Σ the matrix $\Sigma = \text{diag}(\sigma)L$, where $\text{diag}(\sigma)_{i,j} = \sigma^i \delta_{i,j}$. Under our assumption, the matrices Σ and γ_{Z_T} are invertible.

In what follows, we denote $A_{i,\cdot}$ (respectively $A_{\cdot,i}$) the i -th row (respectively i -th column) of the matrix A .

Sensitivity w.r.t. p_i . In view of (4.10) we have $\partial_{p_i} \mathcal{P} = \partial_{Z_0^i} \mathcal{P} \frac{1}{p_i}$ and it suffices to compute sensitivity w.r.t. $\theta = Z_0^i$. Clearly $\partial_{Z_0^i} Z_T = e^i$ where e^i is the i -th element of the canonical basis of \mathbb{R}^d , therefore the weight $\mathcal{I}(Z^\theta, 1)$ in Theorem 6 becomes

$$\begin{aligned} \mathcal{I}(Z^\theta, 1) &= \delta \left(\sum_{j=1}^d \left(\gamma_{Z_T}^{-1} \partial_{Z_0^i} Z_T \right)_j D \cdot Z_T^j \right) \\ &= \delta \left(\sum_{j=1}^d (\gamma_{Z_T}^{-1})_{j,i} (\Sigma \mathbf{1}_{[0,T]})_{j,\cdot} \right) = \delta \left(\sum_{j=1}^d (\gamma_{Z_T}^{-1})_{i,j} (\Sigma \mathbf{1}_{[0,T]})_{j,\cdot} \right) \\ &= \frac{1}{T} \delta \left((\Sigma \Sigma^*)^{-1} \Sigma \mathbf{1}_{[0,T]} \right)_{i,\cdot} \\ &= \frac{1}{T} \delta \left((\Sigma^*)^{-1} \right)_{i,\cdot} \mathbf{1}_{[0,T]} = \frac{1}{T} \Sigma^{-1} e^i \cdot W_T. \end{aligned}$$

The computation of the sensitivities with respect to σ^i and $C_{i,j}$ involves quantities of the form $\delta((AW_T)^i \times u^* \mathbf{1}_{[0,T]}(\cdot))$, where A is a $d \times d$ matrix and u a (constant) vector in \mathbb{R}^d . We will therefore make use of the following formula

$$\delta((AW_T)^i u^* \mathbf{1}_{[0,T]}(\cdot)) = (AW_T)^i u \cdot W_T - T (Au)^i \quad (4.11)$$

Equation (4.11) can be proven using the identity $\delta(FU) = F\delta(U) - \langle DF, U \rangle$ which holds for $U \in \text{dom}(\delta)$ and $F \in \mathbf{D}^{1,2}$, where we denote $\langle V, U \rangle = \sum_{j=1}^d \int_0^T V_t^j U_t^j dt$.

Sensitivity w.r.t. $\theta = \sigma^i$. We have $\partial_{\sigma^i} Z_T = (-\sigma^i T + (LW_T)^i)e^i$. Since $\partial_{\sigma^i} Z_T$ and e^i are collinear, the computations are very similar to the previous ones, and we obtain

$$\begin{aligned} \mathcal{I}(Z^\theta, 1) &= \delta \left(\sum_{j=1}^d (\gamma_{Z_T}^{-1} \partial_{\sigma^i} Z_T)_j D \cdot Z_T^j \right) \\ &= \frac{1}{T} \delta \left((-\sigma^i T + (LW_T)^i) ((\Sigma^*)^{-1})_{i,\cdot} \mathbf{1}_{[0,T]} \right) \\ &= -\sigma^i \delta \left(((\Sigma^*)^{-1})_{i,\cdot} \mathbf{1}_{[0,T]} \right) + \frac{1}{T} \delta \left((LW_T)^i ((\Sigma^*)^{-1})_{i,\cdot} \mathbf{1}_{[0,T]} \right) \\ &= \Sigma^{-1} e^i \cdot W_T \left(-\sigma^i + \frac{1}{T} (LW_T)^i \right) - (L\Sigma^{-1})_{i,i} \end{aligned}$$

where we have applied the identity (4.11) with $A = L$ and $u^* = ((\Sigma^*)^{-1})_{i,\cdot}$ in the last step.

Sensitivity w.r.t. $\theta = C_{i,j}$, $i < j$. We wish to take partial derivatives of functions defined on the set of correlation matrices $\mathcal{C} = \{(C_{i,j})_{i,j} : C \in \mathcal{S}_{\geq 0}^d, C_{i,i} = 1, C \text{ invertible}\}$ with respect to each of the entries $C_{i,j}$, $i < j$, where $\mathcal{S}_{\geq 0}^d$ denotes the set of symmetric and positive matrices. This is possible under the invertibility assumption because, given a matrix $C \in \mathcal{C}$ and fixed $i < j$, the whole set $\{C_\varepsilon := C + \varepsilon e^{i,j} + \varepsilon e^{j,i}, \varepsilon \in \mathbb{R}\}$ is contained in \mathcal{C} for ε small enough, where $e^{i,j}$ denotes the matrix such that $(e^{i,j})_{i,j} = 1$ and with zero entries elsewhere.³

In particular, for the symmetric square root $L = \sqrt{C}$, its partial derivative $\dot{L} := \partial_{C_{i,j}} L$ solves the Sylvester equation [Hig08, p.58]

$$\dot{L} L + L \dot{L} = e^{i,j} + e^{j,i} := \dot{C}.$$

From (4.9), we derive $\partial_{C_{i,j}} Z_T = \partial_{C_{i,j}} [\text{diag}(\sigma) LW_T] = \text{diag}(\sigma) \dot{L} W_T$. This yields

$$\begin{aligned} \mathcal{I}(Z^\theta, 1) &= \delta \left(\sum_{l=1}^d (\gamma_{Z_T}^{-1} \partial_{C_{i,j}} Z_T)_l D \cdot Z_T^l \right) \\ &= \frac{1}{T} \delta \left(\sum_{l=1}^d \left((\Sigma \Sigma^*)^{-1} \text{diag}(\sigma) \dot{L} W_T \right)_l \Sigma_{l,\cdot} \mathbf{1}_{[0,T]} \right) \\ &= \frac{1}{T} \sum_{l=1}^d \left((\Sigma \Sigma^*)^{-1} \text{diag}(\sigma) \dot{L} W_T \right)_l \Sigma_{l,\cdot}^* \cdot W_T - \sum_{l=1}^d \left((\Sigma \Sigma^*)^{-1} \text{diag}(\sigma) \dot{L} \Sigma_{l,\cdot}^* \right)_l \end{aligned}$$

(using (4.11) with $A = (\Sigma \Sigma^*)^{-1} \text{diag}(\sigma) \dot{L}$ and $u^* = \Sigma_{l,\cdot}$)

$$\begin{aligned} &= \frac{1}{T} W_T \cdot (\Sigma^* (\Sigma \Sigma^*)^{-1} \text{diag}(\sigma) \dot{L} W_T) - \text{Tr} \left((\Sigma \Sigma^*)^{-1} \text{diag}(\sigma) \dot{L} \Sigma^* \right) \\ &= \frac{1}{T} W_T \cdot L^{-1} \dot{L} W_T - \text{Tr} (L^{-1} \dot{L}). \end{aligned}$$

Since $W_T \cdot L^{-1} \dot{L} W_T$ is a scalar, it is equal to its transpose $W_T \cdot \dot{L} L^{-1} W_T$, and thus to its average $\frac{1}{2} W_T \cdot (L^{-1} \dot{L} + \dot{L} L^{-1}) W_T$. Similarly, $\text{Tr} (L^{-1} \dot{L}) = \frac{1}{2} \text{Tr} (L^{-1} \dot{L} + \dot{L} L^{-1})$. We claim that

$$L^{-1} \dot{L} + \dot{L} L^{-1} = L^{-1} \dot{C} L^{-1}, \quad (4.12)$$

which gives the final representation

$$\begin{aligned} \mathcal{I}(Z^\theta, 1) &= \frac{1}{2T} W_T \cdot (L^{-1} (e^{i,j} + e^{j,i}) L^{-1}) W_T - \frac{1}{2} \text{Tr} (L^{-1} (e^{i,j} + e^{j,i}) L^{-1}) \\ &= \frac{1}{T} (L^{-1} W_T)^i (L^{-1} W_T)^j - (C^{-1})_{i,j} \end{aligned}$$

where the final formula follows from standard manipulations.

³The matrices C_ε are clearly symmetric and satisfy $(C_\varepsilon)_{i,i} = 1$. The invertibility of C_ε for ε small enough follows from the continuity of the smallest eigenvalue λ_{\min} from $\mathcal{S}_{\geq 0}^d$ into \mathbb{R} , $A \mapsto \lambda_{\min}(A)$ (with respect to, say, the topology induced by the Hilbert-Schmidt norm), see [HJ90, Hoffman and Wielandt's theorem, p.368].

To prove (4.12), write the derivative of C_ε and $L_\varepsilon = \sqrt{C_\varepsilon}$ w.r.t. ε : it gives (using the notation $\dot{A} = \partial_\varepsilon A_\varepsilon|_{\varepsilon=0}$)

$$-C^{-1}\dot{C}C^{-1} = \partial_\varepsilon C_\varepsilon^{-1}|_{\varepsilon=0} = \partial_\varepsilon L_\varepsilon^{-2}|_{\varepsilon=0} = \partial_\varepsilon L_\varepsilon^{-1}|_{\varepsilon=0}L^{-1} + L^{-1}\partial_\varepsilon L_\varepsilon^{-1}|_{\varepsilon=0} = -L^{-1}\dot{L}L^{-2} - L^{-2}\dot{L}L^{-1}.$$

Now multiplying by L on the left and right we obtain (4.12).

In order to illustrate the application of POP method to estimate model sensitivity in the setting of (4.8), we consider a two-dimensional example which is similar to the example discussed in [GT13, Pg. 10]. We take interest rate $r = \mu^i = 0.01$ and for the other parameters $K = 100$, $T = 1$, $\sigma^1 = 0.25$, $\sigma^2 = 0.225$, correlation parameter $C_{1,2} = 0.9$, $p_1 = 10$, $S_0^1 = 10$, $p_2 = 5$, $S_0^2 = 20$ and estimate the sensitivities of the rare event statistics $\mathbb{E}(K - p_1 S_T^1 - p_2 S_T^2)_+$ with respect to p_1 , σ^1 and $C_{1,2}$. Observe that we choose $\sigma^2 = C_{1,2}\sigma^1$, which corresponds to the critical case described in [GT13, Theorem 1] where the asymptotics of the density of the basket undergoes a change of regime. It is thus arguably delicate to obtain a tractable analytical approximation via the derivation of the density.

In Table 4.4.1, we compare the results of finite difference method using simple Monte Carlo with common random numbers [GRZ84] to those of the POP method with the number of simulations as indicated.

	Sensitivity w.r.t.		
	p_1	σ^1	$C_{1,2}$
POP method (10^6) (mean/std)	-0.7155 (0.0046)	24.0078 (0.1760)	3.1058 (0.0253)
Finite difference (10^6) (mean/std)	-0.7120 (0.0157)	23.9252 (0.4838)	3.0866 (0.1128)
Finite difference (10^9) (99% conf. interval)	(-0.7155, -0.7129)	(23.9285, 24.0108)	(3.0801, 3.0990)

Table 4.4.1: *Estimates of relative sensitivity w.r.t. different model parameters.*

Here the rare event probability $\mathbb{P}(p_1 S_T^1 + p_2 S_T^2 \leq K)$ is around 1.7×10^{-3} . We deliberately choose such an example in order to show the application of our method in “not-so-rare” situations. Actually, when the rare event probability becomes smaller, the performance of POP method is considerably improved with respect to the simple Monte Carlo.

5 Conclusion

In this work, we have studied two algorithms to efficiently compute statistics of rare events when the model is embedded in a setting of Hilbert Gaussian spaces. One algorithm is based on average in space (IPS) and the other on average in time (POP). Both the algorithms are coupled with splitting techniques. We established various convergence results including the adaptive selection of intermediate events in the splitting scheme. The formalism of the Gaussian framework also allows to easily analyze the sensitivities with respect to the model parameters which is an important concern in risk management.

We demonstrate by developing various examples that this Gaussian space viewpoint is sufficiently large to encompass

- many important models in financial engineering and stochastic finance, ranging from Markovian to path-dependent models passing through fractional Brownian motion models,
- many risk management issues, such as model risk, credit risk, market risk.

Finally, the current methodology yields, for free, stress-tests scenarios at any degree of rarity. Our numerical experiments show better performance of the POP method compared to the IPS. Furthermore, the POP method requires considerably smaller computer memory and allows for parallel computations.

References

- [AG11] S. Asmussen and P.W. Glynn. A new proof of convergence of MCMC via the ergodic theorem. *Statistics & Probability Letters*, 81(10):1482–1485, 2011.
- [AR99] S. Asmussen and R.Y. Rubinstein. Sensitivity analysis of insurance risk models via simulation. *Management Science*, 45(8):1125–1141, 1999.
- [AS12] C. Alexander and J-M. Sarabia. Quantile uncertainty and value-at-risk. *Risk Analysis: An International Journal*, 32(8):1293–1308, 2012.

- [CC10] R. Carmona and S. Crépey. Particle methods for the estimation of credit portfolio loss distributions. *Int. J. Theor. Appl. Finance*, 13(4):577–602, 2010.
- [CDLL06] F. Cérou, P. Del Moral, F. Le Gland, and P. Lezaud. Genetic genealogical models in rare event analysis. *ALEA Lat. Am. J. Probab. Math. Stat.*, 1:181–203, 2006.
- [CFV09] R. Carmona, J.P. Fouque, and D. Vestal. Interacting particle systems for the computation of rare credit portfolio losses. *Finance Stoch.*, 13(4):613–633, 2009.
- [CI13] S. Cohen and J. Istas. *Fractional fields and applications*. Springer, 2013.
- [CKM03] P. Cheridito, H. Kawaguchi, and M. Maejima. Fractional Ornstein-Uhlenbeck processes. *Electron. J. Probab*, 8(3):14, 2003.
- [CM01] P. Carr and D. Madan. Towards a theory of volatility trading. *Option Pricing, Interest Rates and Risk Management, Handbook in Mathematical Finance*, pages 458–476, 2001.
- [CMFG12] F. Cérou, P. Del Moral, T. Furon, and A. Guyader. Sequential Monte Carlo for rare event estimation. *Stat. Comput.*, 22(3):795–808, 2012.
- [Con06] R. Cont. Model uncertainty and its impact on the pricing of derivative instruments. *Mathematical finance*, 16(3):519–547, 2006.
- [CR98] F. Comte and E. Renault. Long memory in continuous-time stochastic volatility models. *Mathematical Finance*, 8(4):291–323, 1998.
- [DD98] G. Deelstra and F. Delbaen. Convergence of discretized stochastic (interest rate) processes with stochastic drift term. *Applied stochastic models and data analysis*, 14(1):77–84, 1998.
- [Del04] P. Del Moral. *Feynman-Kac Formulae: Genealogical and Interacting Particle Systems with Applications*. Springer, New-York, 2004.
- [DFJN14] C.R. Doss, J.M. Flegal, G.L. Jones, and R.C. Neath. Markov chain Monte Carlo estimation of quantiles. *Electronic Journal of Statistics*, 8(2):2448–2478, 2014.
- [DG05] P. Del Moral and J. Garnier. Genealogical particle analysis of rare events. *Annals of Applied Probability*, 15:2496–2534, 2005.
- [Die90] J. Dieudonné. *Eléments d’analyse*. Jacques Gabay, Paris, 1990. Tome 1, (chapitres I à XI), Fondements de l’Analyse moderne.
- [Dup94] B. Dupire. Pricing with a smile. *Risk*, 7(1):18–20, 1994.
- [EJS98] N. El Karoui, M. Jeanblanc-Picqué, and S.E. Shreve. Robustness of the Black and Scholes formula. *Math. Finance*, 8(2):93–126, 1998.
- [Eur08] European Central Bank. EU banks’ liquidity stress testing and contingency funding plans. *ECB Publications*, <http://www.ecb.europa.eu/pub/pdf/other/eubanksliquiditystresstesting200811en.pdf>, November 2008.
- [FGG⁺15] P.K. Friz, J. Gatheral, A. Gulisashvili, A. Jacquier, and J. Teichmann, editors. *Large Deviations and Asymptotic Methods in Finance*. Springer Proceedings in Mathematics and Statistics. Springer-Verlag, Berlin, 2015.
- [FI14] J-P. Fouque and T. Ichiba. Stability in a model of inter-bank lending. *SIAM Journal on Financial Mathematics*, 4(1):784–803, 2014.
- [FLL⁺99] E. Fournié, J.M. Lasry, J. Lebuchoux, P.L. Lions, and N. Touzi. Applications of Malliavin calculus to Monte Carlo methods in finance. *Finance and Stochastics*, 3(4):391–412, 1999.
- [Geb41] H. Gebelein. Das statistische Problem der Korrelation als Variations-und Eigenwertproblem und sein Zusammenhang mit der Ausgleichsrechnung. *ZAMM-Journal of Applied Mathematics and Mechanics/Zeitschrift für Angewandte Mathematik und Mechanik*, 21(6):364–379, 1941.

- [GHS00] P. Glasserman, P. Heidelberger, and P. Shahabuddin. Variance reduction techniques for estimating Value-at-Risk. *Management Science*, 46:1349–1364, 2000.
- [GJ14] J. Gatheral and T. Jaisson. Fractional volatility models. *Presentation at Bloomberg seminar*, <http://mfe.baruch.cuny.edu/wp-content/uploads/2012/09/FractionalVolatility2014BBQ.pdf>, June 2014.
- [GJR14] J. Gatheral, T. Jaisson, and M. Rosenbaum. Volatility is rough. *Preprint available at SSRN 2509457*, 2014.
- [GL15] E. Gobet and G. Liu. Rare event simulation using reversible shaking transformations. *SIAM Scientific Computing*, 37(5):A2295–A2316, 2015.
- [GM05] E. Gobet and R. Munos. Sensitivity analysis using Itô-Malliavin calculus and martingales. Application to stochastic control problem. *SIAM Journal of Control and Optimization*, 43:5:1676–1713, 2005.
- [GO02] P.W. Glynn and D. Ormoneit. Hoeffding’s inequality for uniformly ergodic markov chains. *Statistics & probability letters*, 56(2):143–146, 2002.
- [Gob04] E. Gobet. Revisiting the Greeks for European and American options. In J. Akahori, S. Ogawa, and S. Watanabe, editors, *Stochastic processes and applications to mathematical finance*, pages 53–71. World Scientific, 2004.
- [GRZ84] S. Gal, R.Y. Rubinstein, and A. Ziv. On the optimality and efficiency of common random numbers. *Mathematics and computers in simulation*, 26(6):502–512, 1984.
- [GT13] A. Gulisashvili and P. Tankov. Tail behavior of sums and differences of log-normal random variables. *ArXiv preprint arXiv:1309.3057*, 2013.
- [Gul12] A. Gulisashvili. Asymptotic equivalence in Lee’s moment formulas for the implied volatility, asset price models without moment explosions, and Piterbarg’s conjecture. *International Journal of Theoretical and Applied Finance*, 15:1–34, 2012.
- [Guy14] J. Guyon. Path-dependent volatility. *Preprint available at <http://ssrn.com/abstract=2425048>*, september 2014.
- [GVZ15] A. Gulisashvili, F. Viens, and X. Zhang. Extreme-strike asymptotics for general gaussian stochastic volatility models. *ArXiv preprint, arXiv:1502.05442*, 2015.
- [Hig08] N.J. Higham. *Functions of matrices: theory and computation*. Society for Industrial and Applied Mathematics (SIAM), Philadelphia, 2008.
- [HJ90] R. A. Horn and C. R. Johnson. *Matrix Analysis*. Cambridge Univ. Press, Cambridge, 1990.
- [HR98] D.G. Hobson and L.C.G. Rogers. Complete models with stochastic volatility. *Math. Finance*, 8(1):27–48, 1998.
- [Jan97] S. Janson. *Gaussian Hilbert spaces*, volume 129. Cambridge university press, 1997.
- [KLM05] I. Kontoyiannis, L.A. Lastras-Montano, and S.P. Meyn. Relative entropy and exponential deviation bounds for general markov chains. In *Information Theory, 2005. ISIT 2005. Proceedings. International Symposium on*, pages 1563–1567. IEEE, 2005.
- [KY09] A. Kohatsu-Higa and K. Yasuda. Estimating multidimensional density functions using the Malliavin-Thalmaier formula. *SIAM J. Numer. Anal.*, 47:1546–1575, 2009.
- [Lag06] A. Lagnoux. Rare event simulation. *Probab. Engrg. Inform. Sci.*, 20(1):45–66, 2006.
- [Lee04] R.W. Lee. The moment formula for implied volatility at extreme strikes. *Mathematical Finance*, 14(3):469–480, 2004.
- [MT09] S.P. Meyn and R.L. Tweedie. *Markov chains and stochastic stability*. Cambridge university press, 2009.

- [Nua06] D. Nualart. *Malliavin calculus and related topics*. Springer Verlag, second edition, 2006. (with corrections on the webpage of the author).
- [RK08] R.Y. Rubinstein and D.P. Kroese. *Simulation and the Monte Carlo method*. Wiley Series in Probability and Statistics. Wiley-Interscience [John Wiley & Sons], Hoboken, NJ, second edition, 2008.
- [Shi04] I. Shigekawa. *Stochastic analysis*, volume 224. American Mathematical Soc., 2004.
- [VV91] M. Villén-Altamirano and J. Villén-Altamirano. RESTART: a method for accelerating rare event simulations. In *Proceedings of the 13th International Teletraffic Congress, Copenhagen*, pages 71–76, 1991.