



HAL
open science

A phase-field model for ferroelectrics with general kinetics, Part I: Model formulation

Laurent Guin, Dennis M Kochmann

► **To cite this version:**

Laurent Guin, Dennis M Kochmann. A phase-field model for ferroelectrics with general kinetics, Part I: Model formulation. *Journal of the Mechanics and Physics of Solids*, 2023, 176, pp.105301. 10.1016/j.jmps.2023.105301 . hal-04097097

HAL Id: hal-04097097

<https://polytechnique.hal.science/hal-04097097>

Submitted on 14 May 2023

HAL is a multi-disciplinary open access archive for the deposit and dissemination of scientific research documents, whether they are published or not. The documents may come from teaching and research institutions in France or abroad, or from public or private research centers.

L'archive ouverte pluridisciplinaire **HAL**, est destinée au dépôt et à la diffusion de documents scientifiques de niveau recherche, publiés ou non, émanant des établissements d'enseignement et de recherche français ou étrangers, des laboratoires publics ou privés.



A phase-field model for ferroelectrics with general kinetics, Part I: Model formulation

Laurent Guin^{a,b}, Dennis M. Kochmann^{b,*}

^a LMS, CNRS, École polytechnique, Institut Polytechnique de Paris, 91128 Palaiseau, France

^b Mechanics & Materials Lab, Department of Mechanical and Process Engineering, ETH Zürich, 8092 Zürich, Switzerland

ARTICLE INFO

Keywords:

Ferroelectrics
Phase transformation
Phase-field model
Domain wall
Interface kinetics

ABSTRACT

When subjected to electro-mechanical loading, ferroelectrics see their polarization evolve through the nucleation and evolution of domains. Existing mesoscale phase-field models for ferroelectrics are typically based on a gradient-descent law for the evolution of the order parameter. While this implicitly assumes that domain walls evolve with linear kinetics, experiments instead indicate that domain wall kinetics is nonlinear. This, in turn, is an important feature for the modeling of rate-dependent effects in polarization switching. We propose a new multiple-phase-field model for ferroelectrics, which permits domain wall motion with nonlinear kinetics, with applications in other solid–solid phase transformation problems. By means of analytical traveling wave solutions, we characterize the interfacial properties (energy and width) and the interface kinetics of straight domain walls, as furnished by the general kinetics model, and compare them to those of the classical Allen–Cahn model. We show that the proposed model propagates domain walls with arbitrarily chosen nonlinear kinetic relations, which can be tuned to differ for the different types of domain walls in accordance with experimental evidence.

1. Introduction

Ferroelectrics are a prime example of multifunctional materials with electro-mechanical coupling. They are largely used as sensors and actuators for their piezoelectric properties Uchino (2018) as well as in ferroelectric random-access memory (Ishiwara et al., 2004), which uses the reversibility of spontaneous polarization states. Below a critical temperature, referred to as the Curie temperature, ferroelectric ceramics possess a polar structure with a *spontaneous electric polarization*, which can be reversed under the application of electro-mechanical loading. Polarization switching is accommodated by transformations between lattice variants of different orientations—e.g., the six orientations of the tetragonal variants for barium titanate (BaTiO_3) at room temperature—and between phases of distinct crystal symmetry types—e.g., the tetragonal and rhombohedral phases in some compositions of lead zirconate titanate (PZT).

At the mesoscale (tens of nanometers to hundreds of microns), polarization reversal occurs through the emergence and evolution of a *microstructure* formed by the different variants (and phases, where applicable) referred to as ferroelectric *domains* separated by *domain walls*. In defect-free ferroelectric single-crystals, the microstructure that develops during switching vanishes at the end of that process, which leads to a single polarization domain in the sample (Little, 1955). By contrast, in polycrystalline ferroelectric ceramics, grains with different orientations exert mechanical constraints, so that microstructural arrangements with multiple ferroelectric domains remain after polarization switching (Art and Sasko, 1980).

* Corresponding author.

E-mail address: dmk@ethz.ch (D.M. Kochmann).

<https://doi.org/10.1016/j.jmps.2023.105301>

Received 16 February 2023; Received in revised form 17 April 2023; Accepted 18 April 2023

Available online 26 April 2023

0022-5096/© 2023 The Author(s). Published by Elsevier Ltd. This is an open access article under the CC BY license (<http://creativecommons.org/licenses/by/4.0/>).

At the macroscale, a few representative curves are commonly used to characterize polarization switching. First, *bipolar measurements* are obtained by cycling the applied electric field between $\pm e_{\max}$. These yield the $p - e$ hysteresis curve and the strain butterfly curve, giving, respectively, the evolution of the average polarization and longitudinal strain (under stress-free conditions) as functions of the applied electric field. When bipolar measurements are performed at a sufficiently low rate (typically with frequency $\omega \lesssim 10^{-3}$ Hz), no rate dependence is observed, suggesting that the kinetics of domain evolution only plays a minor role. By contrast, at higher rates bipolar curves show a strong rate dependence, a consequence of the finite kinetics of domain evolution (see, e.g., [Wieder 1957](#), [Chen et al. 2011](#), [Wieder 1957](#), [Schmidt 1981](#), [Yin and Cao 2002](#), [Chen et al. 2011](#), and [Kannan et al. 2022](#) for rate-dependent hysteresis curves in single and polycrystals, respectively). Another type of experiment, referred to as *pulse experiment*, determines the time evolution of the average polarization and strain in response to an applied pulse of the electric field (see, e.g., [Merz 1954](#), [Merz 1956](#), and [Hubmann et al. 2016](#) for single crystals and [Genenko et al. 2012](#), [Schultheiß et al. 2018](#), and [Schultheiß et al. 2019](#) for polycrystals). While no significant polarization reversal occurs during the short rise time of pulse loading ($\sim 0.1 \mu\text{s}$), polarization switching does occur during the subsequent constant applied electric field. Overall, the profile of the time evolution of polarization and strain is a fingerprint at the macroscale of the sequence of switching mechanisms at the mesoscale, namely, the nucleation of domains and their subsequent evolution with finite kinetics. Hence, a proper modeling of the kinetics of domain evolution is crucial for understanding the macroscopic response of ferroelectrics as given by rate-dependent bipolar measurements or pulse experiments.

At the mesoscale, continuum models that resolve the time evolution of the domain microstructure together with the local distribution of electric and mechanical fields are of two sorts: (i) *sharp-interface models*, which describe domain walls as surfaces of discontinuity with zero thickness, and (ii) *diffuse-interface models* (also referred to as *phase-field models*), in which the electro-mechanical fields vary steeply but continuously across domain walls.

In sharp-interface models, the classical balance laws of electro-quasistatics and mechanics provide field equations within ferroelectric domains and jump conditions at the domain walls. These are completed by constitutive relations that account for the elastic, dielectric, and piezoelectric properties of the ferroelectric variants. Domain walls are twin interfaces or phase boundaries, for which it is known from the continuum theory of phase transitions that their velocity is, in the subsonic regime, not uniquely determined by the above system of equations ([Abeyaratne and Knowles, 2006](#)). Hence, the jump conditions are complemented by an additional relation termed the *kinetic relation*¹ between the normal velocity of the interface and the local *driving traction*. This framework, first developed in the mechanics literature within the thermo-mechanical setting ([Truskinovsky, 1987](#); [Abeyaratne and Knowles, 1990](#)), was later extended to include the interaction with electromagnetic fields ([Jiang, 1994b](#)) and applied to ferroelectrics in [Jiang \(1994a\)](#), [Rosakis and Jiang \(1995\)](#), [Loge and Suo \(1996\)](#), and [Kessler and Balke \(2006\)](#). Nevertheless, due to the presence of moving surfaces of discontinuity, the sharp-interface model does not lend itself to numerical simulations, which is why in practice its use is limited to analytical works.

In parallel, *diffuse-interface* approaches based on the *time-dependent Ginzburg–Landau* (TDGL) model were developed to simulate the evolution of the patterns formed by ferroelectric domains. Based on the early modeling of the structure of domains in ferromagnets by [Landau and Lifshitz \(1935\)](#), Ginzburg–Landau potentials—with multiwelled functions of the polarization vector supplemented with polarization gradient terms—were used to model the dependence on temperature of properties of ferroelectric domain walls, such as their thickness and energy, when close to the paraelectric–ferroelectric transition temperature ([Zhirmov, 1959](#); [Bulaevskii and Ginzburg, 1964](#); [Cao and Cross, 1991](#)). Later, and initially in the physics and material science literature, these works were extended by the TDGL formulation with the purpose of investigating the paraelectric–ferroelectric transition with a focus on the velocity of the paraelectric–ferroelectric interface ([Gordon, 1986](#)) and the formation and evolution of patterns formed by the different tetragonal variants. The latter arise in ferroelectrics quenched below the Curie temperature, as a consequence of the paraelectric–ferroelectric transition ([Nambu and Sagala, 1994](#); [Ahluwalia and Cao, 2001](#); [Yang and Chen, 1995](#); [Hu and Chen, 1997, 1998](#); [Li et al., 2001](#)). Afterwards, works in the mechanics literature dealt with the coupling of the TDGL equations—which were re-derived from variational principles ([Zhang and Bhattacharya, 2005a](#)) or microforce balance ([Su and Landis, 2007](#))—with electrostatic Gauss’ law and the mechanical balance equations to simulate the evolution of ferroelectric domain patterns in response to an applied electric field, i.e., *polarization switching* ([Zhang and Bhattacharya, 2005a,b](#); [Su and Landis, 2007](#); [Vidyasagar et al., 2017](#); [Indergand et al., 2020](#)).

While these later works successfully accounted for features of the quasistatic $p - e$ hysteresis and strain butterfly curves, the TDGL model reaches its limitations when it comes to modeling rate effects as well as the material response to pulse switching experiments. For instance, TDGL simulations of polarization switching in response to applied electric field pulses of magnitude e_{sw} yield a switching time τ_s that scales as $\tau_s \propto 1/e_{\text{sw}}$ ([Indergand, 2019](#)) in contradiction to the experimental scaling $\tau_s \propto e_{\text{sw}}^{1/2}$ ([Merz, 1956](#); [Schultheiß et al., 2019](#)), known as *Merz law*.

The above scaling that results from the TDGL model is expected, since the TDGL formulation postulates a linear relation between the time evolution of the order parameter (polarization p) and the (negative of the) variational derivative of the free-energy density Ψ , i.e.,

$$\mu \dot{p} = -\frac{\delta \Psi}{\delta p} \quad (1.1)$$

with the inverse mobility coefficient $\mu > 0$. As will be discussed in Section 3, when the TDGL model is viewed as the regularization of a sharp-interface model, the evolution law (1.1), also known as the *Allen–Cahn equation* ([Allen and Cahn, 1979](#)), amounts to

¹ In the remainder of this article the term *kinetic relation* refers to the relation, defined for sharp-interface models, between the normal velocity of the interface and the conjugate driving traction—the latter being defined as the quantity whose product with the normal velocity represents the dissipation rate ([Abeyaratne and Knowles, 2006](#)).

assuming a linear kinetic relation. As reviewed in the [Appendix](#), this point is precisely in contrast with experimental evidence, which shows that domain wall motion is governed by nonlinear kinetic relations. Hence, modeling time-dependent switching with a diffuse-interface approach requires a new phase-field formulation, one that permits nonlinear domain wall kinetics. This is the objective of the present work, which focuses on the theoretical foundation. Part II of this study will present numerical applications.

Domain evolution in ferroelectrics is a specific case of the general class of problems of structural phase transformations. These include, e.g., stress-induced phase transformations (such as the martensite–austenite transformation) and deformation twinning. In this more general setting, the question of how to formulate a regularized model that accounts for the nonlinear kinetics of interfaces in solids was considered before. [Hou et al. \(1999\)](#) used a level-set method based on the Hamilton–Jacobi equation ([Osher and Sethian, 1988](#)) to model interface propagation with nonlinear and anisotropic kinetics. [Alber and Zhu \(2013\)](#) proposed a phase-field model for two-phase solid–solid transformations—termed the *hybrid model* because it shares properties of a Hamilton–Jacobi and a parabolic equation—which permits nonlinear kinetics (see also [Alber and Zhu, 2005, 2007](#)). The model proposed in [Section 4](#) of this article may be interpreted as a reformulation of that of [Alber and Zhu \(2013\)](#), which is specialized for ferroelectrics and extended to transformations between multiple phases (as opposed to only two in the works of [Alber and Zhu 2005, 2007](#), and [Alber and Zhu 2013](#)). On a different front, [Agrawal and Dayal \(2015a,b\)](#) recently proposed a phase-field model that admits nonlinear kinetics. Their evolution equation closely resembles the one of [Hou et al. \(1999\)](#), reformulated as a phase-field model instead of a level-set method. However, the model of [Agrawal and Dayal \(2015a\)](#) does not lend itself easily to extensions to multiple phases (see [Agrawal 2016](#)). Finally, [Tůma et al. \(2018\)](#) included a mixed-type dissipation potential—combining viscous and rate-independent contributions—in the variational formulation of a phase-field model for displacive phase transformations such as martensitic transformations. This furnishes a nonlinear kinetic law in the corresponding sharp-interface model, one that prescribes a threshold on the driving force for interface motion. This model was later extended by including this feature in a multi-phase-field model for solid–solid transformations, which rests upon a micromorphic formulation ([Rezaee-Hajidehi and Stupkiewicz, 2021](#)). While these two formulations introduce in a neat fashion a specific nonlinearity in the kinetic relation (specifically, a threshold on the driving force), our goal here is to include a kinetic relation with general nonlinearity so as to accurately account for experimentally measured kinetics. Within this setting of diffuse-interface models with nonlinear kinetics for solid–solid transformations, the one we introduce in [Section 4](#) is the first to encompass multiple-phase transformations and embed arbitrary nonlinearity. It finds a particularly relevant application in ferroelectric domain evolution, since experimental evidence confirms that the kinetic relation for domain walls is nonlinear. Further, the proposed model allows to select different kinetics for the different types of domain walls (e.g., 90° and 180° domain walls in tetragonal ferroelectrics), as it is indicated by experimental results.

The remainder of this article is organized as follows. In [Section 2](#) we introduce a sharp-interface model for ferroelectrics, which constitutes the basis for discussing the characteristics of the diffuse-interface models of subsequent sections. [Section 3](#) reviews the characteristics of classical models based on the Allen–Cahn equation with regards to the properties (interfacial energy and thickness) and kinetics of 90° and 180° domain walls. In [Section 4](#), we introduce a new phase-field model for ferroelectrics with general kinetics, and we discuss its properties with focus on the kinetics of the two types of domain walls. The main features of the new phase-field model are discussed in the conclusion in [Section 5](#). Empirical data on the nonlinear kinetics of domain walls in barium titanate coming from the physics literature are briefly reviewed in the [Appendix](#). Numerical applications will be reported in Part II of this study.

2. The sharp-interface model for ferroelectrics

We begin by formulating a mesoscale continuum model for ferroelectrics. Domain walls are represented by sharp interfaces, across which some or all of the electro-mechanical fields exhibit discontinuities. The motion of a domain wall is governed by a function, termed the *kinetic relation*, which relates its normal velocity to the thermodynamic driving traction exerted on the interface. The sharp-interface model introduced in this section serves as a reference to discuss the behavior of the diffuse-interface models of [Sections 3](#) and [4](#).

In [Section 2.1](#), we present the mechanical balance laws, Maxwell’s equations and evolution equation for a singular surface, formulated for a general continuum subject to electro-mechanical coupling. In [Section 2.2](#), we introduce an expression for the electric enthalpy of ferroelectrics, from which the constitutive relations derive, and we discuss the functional form of the kinetic relation appropriate for domain wall motion in ferroelectrics. The resulting model is specialized to rigid ferroelectrics in [Section 2.3](#).

Note that we use the following notation of tensor calculus. For any vector fields $\mathbf{v}(\mathbf{x}, t)$ and $\mathbf{w}(\mathbf{x}, t)$, second-order tensor fields $\mathbf{R}(\mathbf{x}, t)$ and $\mathbf{S}(\mathbf{x}, t)$, and third- and fourth-order tensors \mathbb{T} and \mathbb{U} , respectively, we have in a Cartesian basis

$$\left\{ \begin{array}{llll} (\nabla \mathbf{v})_{ij} = v_{i,j}, & (\operatorname{div} \mathbf{R})_i = R_{ij,j}, & (\mathbf{R}\mathbf{v})_i = R_{ij}v_j, & (\mathbf{R} \cdot \mathbf{S})_{ij} = R_{ik}S_{kj}, \\ \mathbf{R} : \mathbf{S} = R_{ij}S_{ij}, & (\mathbb{T}^\top \cdot \mathbf{v})_{ij} = T_{kij}v_k, & (\mathbb{T} : \mathbf{R})_k = T_{ijk}R_{jk}, & (\mathbb{U} : \mathbf{R})_{ij} = U_{ijkl}R_{kl}, \end{array} \right. \quad (2.1)$$

where indices following a comma indicate spatial derivatives, and we use Einstein’s summation convention.

2.1. General principles

We consider a deformable body B occupying the region $\Omega \subset \mathbb{R}^3$ in the presence of electrostatic fields filling \mathbb{R}^3 . The deformation of B is described by the displacement field $\mathbf{u}(\mathbf{x}, t) : \Omega \times \mathbb{R} \rightarrow \mathbb{R}^3$. Given the small strains encountered in ferroelectric ceramics, we

assume linearized kinematics and introduce the infinitesimal strain tensor $\epsilon(\mathbf{x}, t) = (\nabla \mathbf{u})_{\text{sym}} = \frac{1}{2} [\nabla \mathbf{u} + (\nabla \mathbf{u})^T]$. In addition, we restrict ourselves to quasistatics both in the mechanical sense (i.e., inertia is neglected) and in the sense of electro-quasistatics (i.e., magnetic induction is neglected) and assume that no free charges exist within Ω . The former is justified by the slow rates of interest, while the latter is a common assumption for undoped ferroelectrics. Let $S(t)$ be a regular surface of discontinuity for some or all of the electro-mechanical fields, which separates Ω into $\Omega_-(t)$ and $\Omega_+(t)$. For $\mathbf{x} \in S(t)$ we denote by $\mathbf{n}(\mathbf{x}, t)$ the unit normal to $S(t)$ pointing into Ω_+ .

Classically, one derives the field equations in $\Omega \setminus S$ and jump conditions on S by localizing the integral form of mechanical balances and electrostatic equations on these two sets (Abeyaratne and Knowles, 1990; Jiang, 1994b; Gurtin et al., 2009; Kessler and Balke, 2006; Mueller et al., 2006). In the following, we directly use the local forms. Mechanical equilibrium reads

$$\begin{cases} \operatorname{div} \boldsymbol{\sigma} = 0 & \text{in } \Omega \setminus S(t), \\ \llbracket \boldsymbol{\sigma} \rrbracket \mathbf{n} = 0 & \text{on } S(t), \end{cases} \quad (2.2)$$

where $\boldsymbol{\sigma}(\mathbf{x}, t)$ denotes the Cauchy stress tensor. For a generic field $w(\mathbf{x}, t)$ defined in $\Omega \setminus S$ we define the jump $\llbracket w(\mathbf{x}, t) \rrbracket = w^+(\mathbf{x}, t) - w^-(\mathbf{x}, t)$, where $w^+(\mathbf{x}, t)$ and $w^-(\mathbf{x}, t)$ are the limiting values of w at point \mathbf{x} on $S(t)$, given by

$$w^+(\mathbf{x}, t) = \lim_{\substack{\xi \rightarrow 0 \\ \xi > 0}} w(\mathbf{x} + \xi \mathbf{n}(\mathbf{x}, t)) \quad \text{and} \quad w^-(\mathbf{x}, t) = \lim_{\substack{\xi \rightarrow 0 \\ \xi < 0}} w(\mathbf{x} + \xi \mathbf{n}(\mathbf{x}, t)). \quad (2.3)$$

When it comes to the electrostatic fields, we denote by $\mathbf{e}(\mathbf{x}, t)$ the electric field, by $\mathbf{d}(\mathbf{x}, t)$ the electric displacement, and by $\mathbf{p}_{\text{mat}}(\mathbf{x}, t)$ the polarization² field. All three are defined over $\mathbb{R}^3 \times \mathbb{R}$ and related by definition through

$$\mathbf{d} = \epsilon_0 \mathbf{e} + \mathbf{p}_{\text{mat}}, \quad (2.4)$$

where ϵ_0 is the permittivity of vacuum. In the absence of free charges, Gauss' law becomes

$$\begin{cases} \operatorname{div} \mathbf{d} = 0 & \text{in } \Omega \setminus S(t), \\ \llbracket \mathbf{d} \rrbracket \cdot \mathbf{n} = 0 & \text{on } S(t), \end{cases} \quad (2.5)$$

while the Maxwell–Faraday equation in the quasistatic regime yields

$$\begin{cases} \operatorname{curl} \mathbf{e} = 0 & \text{in } \Omega \setminus S(t), \\ \llbracket \mathbf{e} \rrbracket \times \mathbf{n} = 0 & \text{on } S(t). \end{cases} \quad (2.6)$$

In the context of ferroelectrics, surface S typically represents domain walls (separating domains with different polarizations) or interphases (separating different phases, e.g., tetragonal and rhombohedral phases). We use the index $\alpha \in D = \{1, \dots, N\}$ to identify the N different domains or phases. By taking e and ϵ as the independent state variables, the constitutive relations for $\boldsymbol{\sigma}$ and \mathbf{d} derive from the electric enthalpy density $W_\alpha(e, \epsilon)$ associated with domain α through, respectively,

$$\boldsymbol{\sigma} = \frac{\partial W_\alpha}{\partial \epsilon} \quad \text{and} \quad \mathbf{d} = -\frac{\partial W_\alpha}{\partial e}. \quad (2.7)$$

We associate with the interface S a constant excess electric enthalpy density γ , more simply referred to as *interfacial energy*. The combination of energy balance and entropy imbalance permits deriving the rate of entropy production $\delta(\mathbf{x}, t)$ per unit area of S at $\mathbf{x} \in S(t)$ as

$$\delta = f V_n, \quad (2.8)$$

where $V_n(\mathbf{x}, t)$ is the normal velocity of S (taken positive in the direction of \mathbf{n}), and $f(\mathbf{x}, t)$ is the thermodynamic driving traction (Jiang, 1994b; Mueller et al., 2006)³ given by

$$f = \mathbf{n} \cdot \llbracket \mathbf{C} \rrbracket \mathbf{n} + \gamma \kappa. \quad (2.9)$$

In (2.9), $\kappa(\mathbf{x}, t)$ denotes twice the mean curvature of S and $\mathbf{C}(\mathbf{x}, t)$ is the Eshelby tensor provided by

$$\mathbf{C} = W_\alpha \mathbf{I} - \nabla \mathbf{u}^T \cdot \boldsymbol{\sigma} + e \otimes \mathbf{d} \quad (2.10)$$

in the domain α , with \mathbf{I} the identity tensor.

Notice from (2.9) that f and V_n are work-conjugate. The motion of $S(t)$ is hence specified by a relation between V_n and f , called the *kinetic relation*. The latter may be interpreted as an additional constitutive relation, which embeds information about the microscopic processes underlying the motion of S and takes the form

$$V_n = \hat{V}_n(f), \quad (2.11)$$

² Note that we here use the notation \mathbf{p}_{mat} for the polarization (sometimes referred to as *material polarization*, see e.g., Schrade et al. (2013)). Indeed, we reserve the notation \mathbf{p} for what we call the *spontaneous polarization*, i.e., the polarization in a ferroelectric variant at zero stress and electric field (see Section 2.2).

³ Note that in Jiang (1994a) the driving traction at the interface is expressed with a different free-energy density, which reads, using our notations, $\tilde{W}_\alpha(\mathbf{p}_{\text{mat}}, \epsilon)$ with associated constitutive relations $\boldsymbol{\sigma} = \partial \tilde{W}_\alpha / \partial \epsilon$ and $e = \partial \tilde{W}_\alpha / \partial \mathbf{p}_{\text{mat}}$. It is related to the electric enthalpy $W_\alpha(e, \epsilon)$ through $W_\alpha(e, \epsilon) = \tilde{W}_\alpha(\mathbf{p}_{\text{mat}}, \epsilon) + \frac{\epsilon_0}{2} e \cdot e - e \cdot \mathbf{d}$. Rewriting the driving force (4.8) in Jiang (1994a) in terms of W_α , one obtains with the help of (2.2)–(2.6) the first term of (2.9). Alternatively, this expression has been derived variationally by Mueller et al. (2006). The term $\gamma \kappa$ in (2.9), is associated with curvature-driven motion and originates from the fact that S is endowed with excess electric enthalpy. Derivations of this classical term can be found, e.g., in Gurtin (2000) for surfaces in three dimensions or in Gurtin (1993) for curves in two dimensions.

where $\hat{V}_n : \mathbb{R} \rightarrow \mathbb{R}$ is a function subject to the restriction

$$\hat{V}_n(f)f \geq 0 \quad \text{for all } f \in \mathbb{R}, \quad (2.12)$$

which ensures the positivity of the entropy production rate δ (required by the second law of thermodynamics). In general, several surfaces of discontinuity between the different domains or phases evolve simultaneously. Interface energy γ and kinetic relation $\hat{V}_n(f)$ are characteristic of each interface S , i.e., they generally depend on the two phases separated by S .

2.2. Constitutive laws

We apply the model presented in Section 2.1 to the case of a ferroelectric ceramic, which exhibits, below the Curie temperature, a tetragonal crystalline structure with $N = 6$ variants in three dimensions (3D), as is the case, e.g., for barium titanate (BaTiO_3) and some compositions of lead zirconate titanate (PZT).

Bulk constitutive behavior. Each variant possesses a spontaneous polarization p_α which, in the orthonormal system $(\bar{e}_1, \bar{e}_2, \bar{e}_3)$ aligned with the principal crystallographic directions, is defined by

$$p_1 = -p_2 = p_0 \bar{e}_1, \quad p_3 = -p_4 = p_0 \bar{e}_2 \quad \text{and} \quad p_5 = -p_6 = p_0 \bar{e}_3, \quad (2.13)$$

where p_0 is the magnitude of the spontaneous polarization of the material. Due to the distortion between the cubic and tetragonal phases, each variant exhibits a spontaneous strain ϵ_α^s , which we write as (Kamlah, 2001)

$$\epsilon_\alpha^s = (\epsilon_c - \epsilon_a) \frac{p_\alpha \otimes p_\alpha}{p_0^2} + \epsilon_a \mathbf{I}, \quad (2.14)$$

where $\epsilon_a < 0$ and $\epsilon_c > 0$ are, respectively, the spontaneous longitudinal strain along the a -axes (orthogonal to the direction of spontaneous polarization) and along the c -axis (along the direction of spontaneous polarization)⁴. With these features, each ferroelectric variant is modeled as a linear elastic, dielectric, and piezoelectric material with the following electric enthalpy:

$$W_\alpha(e, \epsilon) = \underbrace{-\frac{1}{2} e \cdot \epsilon_\alpha e - p_\alpha \cdot e}_{W_\alpha^{\text{dielec}}(e)} + \underbrace{\frac{1}{2} (\epsilon - \epsilon_\alpha^s) : \mathbb{C}_\alpha : (\epsilon - \epsilon_\alpha^s)}_{W_\alpha^{\text{mech}}(\epsilon)} - \underbrace{(\epsilon - \epsilon_\alpha^s) : \mathbb{E}_\alpha^T \cdot e}_{W_\alpha^{\text{piezo}}(e, \epsilon)}, \quad (2.15)$$

where ϵ_α , \mathbb{C}_α , and \mathbb{E}_α are the second-order dielectric tensor, fourth-order elasticity tensor, and third-order piezoelectric tensor (Brainerd, 1949), respectively, which satisfy the material symmetries of the tetragonal phase. The constitutive relations resulting from (2.7) are

$$\begin{cases} \sigma = \mathbb{C}_\alpha : (\epsilon - \epsilon_\alpha^s) - \mathbb{E}_\alpha^T \cdot e, \\ d = \epsilon_\alpha e + p_\alpha + \mathbb{E}_\alpha : (\epsilon - \epsilon_\alpha^s). \end{cases} \quad (2.16)$$

Kinetic relation. For tetragonal ferroelectrics, we distinguish between two types of domain walls: 180° domain walls separating domains with antiparallel polarizations (i.e., interfaces between $\{\alpha, \beta\} \in \mathcal{I}_{180} = \{\{1, 2\}, \{3, 4\}, \{5, 6\}\}$) and 90° domains walls, across which polarization fields are orthogonal (these correspond to interfaces between $\{\alpha, \beta\} \in \mathcal{I}_{90} = \{\{\alpha, \beta\} : \alpha, \beta \in \mathcal{D}, \alpha \neq \beta\} \setminus \mathcal{I}_{180}$).

The dynamics of domain walls has been investigated both experimentally and theoretically in bulk single-crystals since the 50's and in epitaxial ferroelectric thin films since 2000. These works, reviewed in the Appendix, show that ferroelectrics exhibit two regimes of domain wall dynamics. At low electric fields, the domain wall velocity is described by an inverse exponential law,

$$V_n = V_\infty \exp(-e_a/e), \quad (2.17)$$

where V_∞ is a characteristic velocity and e_a an *activation field* which varies as the inverse of temperature. This kinetics has been interpreted as resulting from thermally-activated nucleation and growth of new domains along the domain wall (Miller and Weinreich, 1960; Shin et al., 2007; Liu et al., 2016) or as a creep process of an interface moving in a pinning potential (Tybell et al., 2002; Jo et al., 2009). As the electric field increases above a threshold field e_t , the wall kinetics experiences a transition to a different regime described by a power law,

$$V_n \propto e^\theta, \quad (2.18)$$

where θ is an exponent that depends on the dimensionality of the system: $\theta = 1.4$ has been reported for bulk BaTiO_3 (Stadler and Zachmanidis, 1963), while $\theta = 0.7$ was found for PZT epitaxial thin films (Jo et al., 2009). Different theoretical explanations for that second regime have been proposed. On the one hand, in line with the work of Miller and Weinreich (1960), this second regime is interpreted in terms of the nucleation of domains at the domain boundary with thicknesses of multiple crystalline unit cells (Stadler and Zachmanidis, 1963). On the other hand, in the picture of an interface moving in a pinning potential, the change in kinetics is seen as a pinning–depinning transition to a non-activated regime, i.e., the wall moves without assistance of thermal fluctuation (Jo et al., 2009).

⁴ ϵ_a and ϵ_c can be uniquely defined from the lattice parameters of the tetragonal phase by using, e.g., Aizu's definition of spontaneous strain (see Tagantsev et al., 2010, Section 2.1.3), which in particular requires volume-preserving spontaneous strain, i.e., $2\epsilon_a + \epsilon_c = 0$.

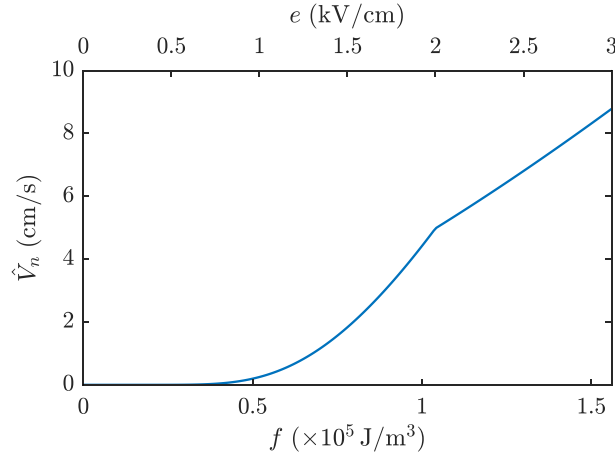


Fig. 1. Kinetic relation (2.19) with parameters corresponding to 180° domain walls in BaTiO_3 (see the Appendix): $V_l = 100 \text{ cm/s}$, $f_a = 3 \times 10^5 \text{ J/m}^3$, $f_t = 1 \times 10^5 \text{ J/m}^3$, $\theta = 1.4$.

Relations (2.17) and (2.18) were obtained on plate-like samples with out-of-plane polarization and electric field. In this configuration, the driving traction reduces to $f = 2p_0e$, i.e., it is proportional to the applied electric field e . Therefore, the experimental evidence discussed above indicates that the motion of domain walls is governed by the following kinetic relation:

$$\hat{V}_n(f) = \begin{cases} V_l \operatorname{sgn}(f) \exp(-f_a/|f|) & \text{for } |f| \leq f_t, \\ V_h \operatorname{sgn}(f) (|f|/f_t)^\theta & \text{for } |f| > f_t, \end{cases} \quad (2.19)$$

where V_l , V_h , f_a , f_t and θ are referred to as the domain wall kinetics parameters and satisfy $V_l \exp(-f_a/f_t) = V_h$ to ensure the continuity of \hat{V}_n at f_t . Such a kinetic relation is plotted in Fig. 1 with the parameters corresponding to 180° walls in BaTiO_3 . As briefly reviewed in the Appendix, experiments indicate that the kinetic relation for 90° domain walls differs from that of 180° walls either in the coefficients of (2.19) or in the functional form of $\hat{V}_n(f)$, depending on the ferroelectric material.

2.3. Specialization to rigid ferroelectrics

Our goal is a phase-field model that displays the nonlinear kinetics presented in Section 2.2, in contrast to the linear kinetics that the classical Allen–Cahn equation furnishes. To this end, we make two simplifying assumptions: first, the ferroelectric ceramic is assumed mechanically rigid, so that mechanical couplings are neglected, and, second, the permittivity is assumed isotropic. These assumptions allow us to work in a clean setting, where the new features of the general kinetics model are clearly revealed. As they are not necessarily valid in practice, they will be lifted in future work, when the objective is to provide quantitative predictions. In this simplified setting, the electric enthalpy density (2.15) of each phase α reduces to that of a dielectric,

$$W_\alpha(e) = -\frac{\epsilon}{2} e \cdot e - p_\alpha \cdot e, \quad (2.20)$$

where the scalar permittivity ϵ is independent of the phase. Consequently, the constitutive relation (2.16)₂ reads

$$d = \epsilon e + p_\alpha. \quad (2.21)$$

In view of (2.5)₂, (2.6)₂ and (2.15), the driving traction (2.9) is rewritten in the simplified form

$$f = -\langle e \rangle \cdot \llbracket p_\alpha \rrbracket + \gamma \kappa, \quad (2.22)$$

where $\langle e \rangle = (e_+ + e_-)/2$.

3. A phase-field model based on the Allen–Cahn equation

Given the numerical difficulties related to the implementation of sharp-interface models, the phase-field method has been a method of choice for modeling the evolution of domains in ferroelectric ceramics. Classically, the order parameter is chosen as the material polarization $p_{\text{mat}}(\mathbf{x}, t)$ (see e.g., Zhang and Bhattacharya, 2005a; Su and Landis, 2007; Vidyasagar et al., 2017) or the spontaneous polarization $p(\mathbf{x}, t)$ (Schrade et al., 2013, 2014), and evolves according to the Allen–Cahn equation.

Anticipating that the phase-field model with general kinetics—introduced in Section 4—uses p as the order parameter, we introduce a phase-field model based on the Allen–Cahn equation written in terms of p , with features of the sharp-interface model of Section 2.3. It serves as a regularized benchmark model to later clarify the new features of the general kinetics model. In

particular, we show that the Allen–Cahn equation yields a linear kinetic relation in the limit of low applied electric fields and that the regularization length has an upper bound for properly approximating the sharp-interface model.

For notational clarity, we use a hat (^) to highlight all quantities (regularized energy, domain wall properties, and kinetics) associated with the *Allen–Cahn-based phase-field model* as opposed to their counterparts for the general kinetic model later discussed in Section 4.

We formulate the model in Section 3.1 and characterize the properties (interface width, energy, and kinetics) of 180° and 90° domain walls in Section 3.2 before a brief summary in Section 3.3.

3.1. Model formulation

A regularized electric enthalpy. The phase-field model is based on a regularized version $\hat{\Psi}(e, p, \nabla p)$ of the electric enthalpy (2.20), which induces continuous variations of p across domain walls. We here adopt the electric enthalpy density of Schrade et al. (2013) specialized to rigid ferroelectrics, which is given by

$$\hat{\Psi}(e, p, \nabla p) = \underbrace{-\frac{\epsilon}{2} e \cdot e - p \cdot e}_{W(e,p)} + \hat{C}_s \hat{\psi}_s(p) + \frac{\hat{C}_g}{2} |\nabla p|^2, \quad (3.1)$$

where \hat{C}_s and \hat{C}_g are constants, and $\hat{\psi}_s(p)$ is a multi-well *separation potential* with minima at the six spontaneous polarization states p_α . Letting $\bar{p} = p/p_0$ be the dimensionless spontaneous polarization, $\bar{\psi}_s$ is defined as

$$\hat{\psi}_s(p) = \bar{\psi}_s\left(\frac{p}{p_0}\right) \quad \text{with} \quad \bar{\psi}_s(\bar{p}) = a_0 + a_1 \sum_{i=1}^3 \bar{p}_i^2 + a_2 \sum_{i=1}^3 \bar{p}_i^{-4} + a_3 (\bar{p}_1^2 \bar{p}_2^2 + \bar{p}_1^2 \bar{p}_3^2 + \bar{p}_2^2 \bar{p}_3^2) + a_4 \sum_{i=1}^3 \bar{p}_i^6 \quad (3.2)$$

being a dimensionless sextic polynomial. As shown in Schrade et al. (2013), the parameters $\{a_i\}_{i=0..4}$ are uniquely determined by requiring (i) that the minima of $\bar{\psi}_s$ are located at $\{\bar{p}_\alpha\}_{\alpha=1..6}$, (ii) that the 180° barrier is normalized, i.e.,

$$\bar{\psi}_s(\bar{e}_1) = 0, \quad \frac{\partial \bar{\psi}_s}{\partial \bar{p}_1}(\bar{e}_1) = 0, \quad \text{and} \quad \bar{\psi}_s(\mathbf{0}) = 1, \quad (3.3)$$

and (iii) by specifying the relative height $0 < \hat{h}_{90} < 1$ and location $\hat{\chi}$ of the 90° barrier through⁵

$$\bar{\psi}_s(\hat{\chi}(\bar{e}_1 + \bar{e}_2)) = \hat{h}_{90} \quad \text{and} \quad \frac{\partial \bar{\psi}_s}{\partial \bar{p}_1}(\hat{\chi}(\bar{e}_1 + \bar{e}_2)) = 0. \quad (3.4)$$

Considering the cubic symmetry of $\bar{\psi}_s$, (3.3) and (3.4) are sufficient to ensure that conditions (i) and (iii) are satisfied for all six wells and all twelve 90° barriers. The choice of \hat{h}_{90} and $\hat{\chi}$ in relation to the properties of 90° domain walls will be discussed in Section 3.2.

Governing equations. In the regularized phase-field model all fields are continuous over B , so the differential forms of Gauss' law (2.5)₁ and Faraday's Eq. (2.6)₁ apply over all Ω . Akin to (2.7), the electric displacement derives from $\hat{\Psi}$ as

$$d = -\frac{\partial \hat{\Psi}}{\partial e} = -\frac{\partial W}{\partial e} = \epsilon e + p. \quad (3.5)$$

These equations are supplemented by an evolution law for p , which is usually taken as the Allen–Cahn gradient-descent equation:

$$\mu \dot{p} = -\frac{\delta \hat{\Psi}}{\delta p} = -\frac{\partial \hat{\Psi}}{\partial p} + \text{div} \left(\frac{\partial \hat{\Psi}}{\partial \nabla p} \right). \quad (3.6)$$

In view of (3.1), (3.6) becomes

$$\mu \dot{p} = e - \hat{C}_s \frac{\partial \hat{\psi}_s}{\partial p} + \hat{C}_g \nabla^2 p. \quad (3.7)$$

A numerical characteristic electric field. In the sharp-interface model, the spontaneous polarization takes the discrete values p_α corresponding to the different domains or phases. In the regularized model, based on the electric enthalpy (3.1), the spontaneous polarization p is a continuously varying variable that plays the role of a vector phase field. Away from the interface, the Laplacian term in (3.7) approximately vanishes and equilibrium values of \bar{p} are defined by

$$\frac{\partial \bar{\psi}_s}{\partial \bar{p}}(\bar{p}) = \frac{e}{\hat{C}_s/p_0}. \quad (3.8)$$

Whereas large departures of p from the values p_α are normal in the transition regions of domain walls, the spontaneous polarization p shall remain close to one of the p_α inside the domains. In view of (3.8), this is the case under the condition that

$$|e| \ll \hat{e}_c, \quad (3.9)$$

⁵ Note that to ensure $a_1 < 0$ and $a_4 > 0$ we have the following constraints: $1 - 2\hat{\chi}^2 < \hat{h}_{90} < 1 - 2\hat{\chi}^6$ (Schrade et al., 2013).

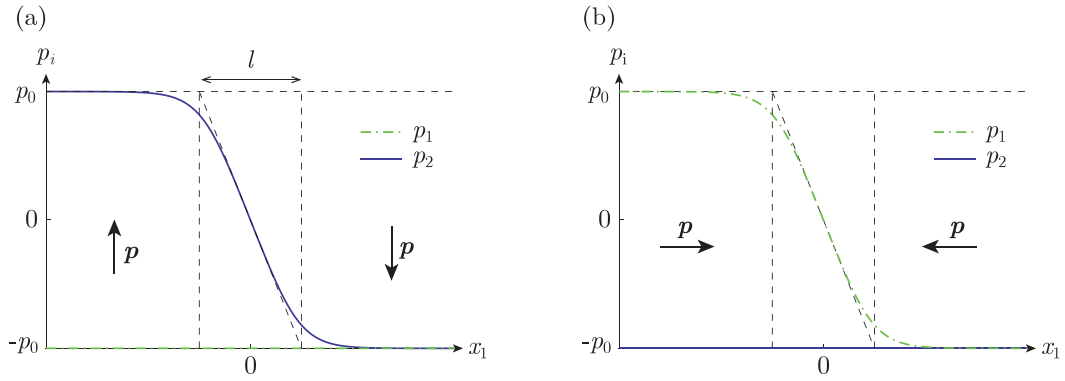


Fig. 2. Polarization profiles of two 180° domain walls: (a) charge-neutral wall, (b) charged wall. The profile in (a) corresponds to the solution (3.12) of (3.11) for $e = 0$, and the profile in (b) is the solution of (3.23) under the equilibrium condition $d = 0$.

where $\hat{e}_c = \hat{C}_s/p_0$ is a numerical characteristic electric field. In practice, (3.9) is ensured by choosing a sufficiently large \hat{C}_s . As we will see in Section 3.2, that is equivalent to selecting a sufficiently small regularization length.

Note that the fulfillment of (3.9) prevents the nucleation of new domains of polarization from (3.7). Therefore, domain nucleation, which is frequently observed in experiments, must be included through an explicit additional condition.

3.2. Analytical solutions for 180° and 90° domain walls

In this section, we compute analytical solutions for straight 180° and 90° domain walls, both in equilibrium and in steady-state motion. When adopting the form of traveling waves, these solutions provide relations between the numerical parameters \hat{C}_s , \hat{C}_g , and μ of the phase-field model and the properties of domain walls (width, interfacial energy, and kinetic relation).

3.2.1. Equilibrium profile of a neutral 180° domain wall

We consider the one-dimensional (1D) case of a 180° domain wall with spontaneous polarization $\mathbf{p}(x, t) = p_2(x_1, t)\mathbf{e}_2$ varying from the equilibrium close to $p_0\mathbf{e}_2$ at $x_1 \rightarrow -\infty$ to the one near $-p_0\mathbf{e}_2$ at $x_1 \rightarrow +\infty$, as schematically shown in Fig. 2(a). This configuration is referred to as *neutral* 180° domain wall due to the continuity of the normal component of \mathbf{p} across the wall, which implies the absence of bound charges in the wall. In view of (3.5) and noting that the polarization profile is divergence-free, we can assume a uniform electric field $e = e\mathbf{e}_2$ while satisfying Gauss' law (2.5)₁.

We look for a traveling wave solution of the form

$$p_1(x_1, t) = 0, \quad p_2(x_1, t) = p_0\check{p}_2(x_1 - v_{180}t), \quad (3.10)$$

where $\xi = x_1 - v_{180}t$ is the co-moving coordinate and v_{180} the velocity of the wall. We denote by $\hat{\psi}_{180}(\bar{p}_2) = \bar{\psi}_s(\bar{p}_2\mathbf{e}_2)$ the section of the separation potential relevant for this situation. Inserting (3.10) into (3.7) yields an ordinary differential equation for $\check{p}_2(\xi)$:

$$\begin{cases} \hat{C}_g p_0 \check{p}_{2,\xi\xi} + \mu v_{180} p_0 \check{p}_{2,\xi} - \frac{\hat{C}_s}{p_0} \hat{\psi}'_{180}(\check{p}_2) = -e, \\ \hat{\psi}'_{180}(\check{p}_2(\pm\infty)) = e p_0 / \hat{C}_s, \end{cases} \quad (3.11)$$

where (3.11)₂ are the far-field boundary conditions at $\pm\infty$, and the prime denotes the derivative of a single-variable function with respect to its variable.

The equilibrium profile: $e = 0$. In the absence of an electric field, (3.11) admits a static analytical solution with $v_{180} = 0$ (Cao and Cross, 1991):

$$\check{p}_2^{\text{eq}}(\xi) = \frac{\sinh(\xi/\hat{\lambda}_{180})}{\sqrt{\hat{A} + \sinh^2(\xi/\hat{\lambda}_{180})}}, \quad \text{with} \quad \hat{A} = \frac{3a_4 + a_2}{2a_4 + a_2} \quad \text{and} \quad \hat{\lambda}_{180} = p_0 \sqrt{\frac{\hat{C}_g}{\hat{C}_s(6a_4 + 2a_2)}}. \quad (3.12)$$

Based on this equilibrium profile, we relate \hat{C}_s and \hat{C}_g to the interface width and energy. We define the width \hat{l} of the 180° domain wall (see Fig. 2) as

$$\hat{l} = 2/\check{p}_{2,\xi}^{\text{eq}}(0) \quad (3.13)$$

and its interfacial energy as

$$\hat{\Gamma} = \int_{-\infty}^{+\infty} \hat{\Psi}(e, \check{p}^{\text{eq}}, \nabla \check{p}^{\text{eq}}) d\xi - \int_{-\infty}^{+\infty} W(e, \mathbf{p}^{\text{sharp}}) d\xi, \quad (3.14)$$

where

$$p^{\text{sharp}}(\xi) = \begin{cases} +p_0 \bar{e}_2 & \text{for } \xi < 0, \\ -p_0 \bar{e}_2 & \text{for } \xi \geq 0 \end{cases} \tag{3.15}$$

is the sharp-interface solution of the 180° domain wall. Noting that e is uniform and equal in both the phase-field and sharp-interface formulations and that the profile $\check{p}^{\text{eq}}(\xi)$ is symmetric, (3.14) reduces to

$$\hat{I} = \int_{-\infty}^{+\infty} \left(\hat{C}_s \hat{\psi}_s(\check{p}^{\text{eq}}) + \frac{\hat{C}_g}{2} |\nabla \check{p}^{\text{eq}}|^2 \right) d\xi = \int_{-\infty}^{+\infty} \left(\hat{C}_s \hat{\psi}_{180}(\check{p}_2^{\text{eq}}(\xi)) + \frac{\hat{C}_g p_0^2 \check{p}_{2,\xi}^{\text{eq}}(\xi)^2}{2} \right) d\xi. \tag{3.16}$$

The first integral of (3.11) in the equilibrium case ($e = 0, v_{180} = 0$), obtained by multiplying (3.11) by $\check{p}_{2,\xi}^{\text{eq}}$ and integrating from $\xi = -\infty$ to some arbitrary ξ , yields

$$2\hat{C}_s \hat{\psi}_{180}(\check{p}_2^{\text{eq}}(\xi)) = \hat{C}_g p_0^2 (\check{p}_{2,\xi}^{\text{eq}}(\xi))^2. \tag{3.17}$$

From (3.17) we extract $\check{p}_{2,\xi}^{\text{eq}}(\xi) = \sqrt{2\hat{C}_s \hat{\psi}_{180}(\check{p}_2^{\text{eq}}(\xi)) / (\hat{C}_g p_0^2)}$, which we exploit for the change of variable $\xi \rightarrow \bar{p}_2$ in (3.16). This yields

$$\hat{I} = \int_{-\infty}^{+\infty} 2\hat{C}_s \hat{\psi}_{180}(\check{p}_2^{\text{eq}}(\xi)) d\xi = \sqrt{2\hat{C}_s \hat{C}_g p_0} \hat{\eta}, \tag{3.18}$$

where $\hat{\eta} = \int_{-1}^1 \hat{\psi}_{180}(\bar{p}) d\bar{p} = \int_{-1}^1 \sqrt{a_0 + a_1 \bar{p}^2 + a_2 \bar{p}^4 + a_4 \bar{p}^6} d\bar{p}$ is a numerical coefficient. Further, combining (3.13) and (3.17) lets us express the width \hat{l} as

$$\hat{l} = p_0 \sqrt{2\hat{C}_g / \hat{C}_s}. \tag{3.19}$$

Conversely, (3.18) and (3.19) allows us to determine \hat{C}_g and \hat{C}_s from \hat{I} and \hat{l} via

$$\hat{C}_g = \frac{\hat{I} \hat{l}}{2\hat{\eta} p_0^2} \quad \text{and} \quad \hat{C}_s = \frac{\hat{I}}{\hat{\eta} \hat{l}}. \tag{3.20}$$

We note here that the interfacial energy \hat{I} shall be taken as the *physical interfacial energy* γ introduced in the sharp interface model, while \hat{l} is viewed as a *numerical parameter*. Indeed, we take the perspective that the objective of the phase-field model is to properly account for the evolution of the pattern formed by domains or phases. In particular, the accuracy of the polarization profile within the diffuse interface (as compared to the physical profile) is of minor importance; instead, we aim to accurately capture the time evolution of the trace of domain walls. An accurate value of \hat{I} to represent the interfacial energy is important to the extent that it is expected from the sharp interface model (see (2.9) and (2.19)) to affect the evolution of a curved interface. This latter point can be confirmed numerically. By contrast, \hat{l} does not directly affect the evolution of the domain wall, but its choice results from a compromise between the following points:

- Because a diffuse interface needs sufficient numerical resolution (e.g., it should be discretized with typically no less than three points across its width in FFT-based schemes Vidyasagar et al. 2017), \hat{l} cannot be taken too small.
- On the other hand, \hat{l} cannot be taken too large either, because the characteristic electric field $\hat{e}_c = \hat{C}_s / p_0 = \hat{I} / (\hat{\eta} \hat{l} p_0)$ introduced in must be sufficiently large for (3.9) to be satisfied with the physical electric field (notably to ensure that p remains close to one of the p_α inside domains).

3.2.2. Equilibrium profile of a charged 180° domain wall

The other characteristic 180° domain wall is the so-called *charged* wall, in which the polarization is orthogonal to the domain wall (head-to-head or tail-to-tail). This configuration is usually not considered in the literature (see e.g. Cao and Cross, 1991; Schrade et al., 2013; Flaschel and De Lorenzis, 2020), because in the absence of free charges it is associated with high electric fields (of the order of p_0/ϵ). As such, it implies high energies (see (3.1)) and is hence considered unstable in general. While it is true that ferroelectric domains evolve in such a way as to minimize the existence of charged 180° domain walls, these cannot be completely disregarded. Indeed, charged portions of domain walls exist if one considers, e.g., two domains of antiparallel polarization separated by a closed boundary (see Fig. 3).

This is the natural scenario of a newly nucleated domain in its parent domain.

Let us consider the 1D configuration of a charged 180° domain wall with spontaneous polarization $p(x, t) = p_1(x_1, t) \bar{e}_1$ varying from the equilibrium close to $p_0 \bar{e}_1$ at $x_1 \rightarrow -\infty$ to the one near $-p_0 \bar{e}_1$ at $x_1 \rightarrow +\infty$ (see Fig. 2(b)). We assume that the applied electric field is zero in the \bar{e}_2 -direction, which implies, $e(x_1, t) = e_1(x_1, t) \bar{e}_1$. As a result, the electric displacement is along the \bar{e}_1 -direction and, because of (2.5)₁, it is uniform. Assuming further that it is time-independent, we write $d(x_1, t) = d \bar{e}_1$ where d is constant. This allows us to write the non-zero electric field component as

$$e_1(x_1, t) = \frac{d - p_1(x_1, t)}{\epsilon}. \tag{3.21}$$

We look for a traveling wave solution of the form

$$p_1(x_1, t) = p_0 \check{p}_1(x_1 - v_{180}^c t), \tag{3.22}$$

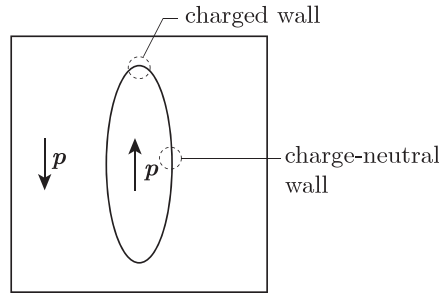


Fig. 3. Sketch of an elliptical 180° inclusion featuring both charge-neutral and charged domain walls.

where $\xi = x_1 - v_{180}^c t$ is the co-moving coordinate, v_{180}^c the velocity of the charged wall, and $\check{p}_1(\xi)$ is a smooth, differentiable function. Inserting (3.22) into (3.7) and resorting to (3.21) yields the ordinary differential equation for $\check{p}_1(\xi)$,

$$\begin{cases} \hat{C}_s p_0 \check{p}_{1,\xi\xi} + \mu v_{180}^c p_0 \check{p}_{1,\xi} - \frac{\hat{C}_s}{p_0} \hat{\psi}_{180}^c (\check{p}_1) = -\frac{d}{\epsilon}, \\ \hat{\psi}_{180}^c (\check{p}_1(\pm\infty)) = \frac{p_0 d}{\epsilon \hat{C}_s}, \end{cases} \quad (3.23)$$

where we have introduced the effective double well potential $\hat{\psi}_{180}^c$ for charged walls as

$$\hat{\psi}_{180}^c(\bar{p}) = \hat{\psi}_{180}(\bar{p}) + \frac{p_0^2}{2\epsilon \hat{C}_s} \bar{p}^2 = \hat{\psi}_{180}(\bar{p}) + \frac{\hat{\eta} \hat{l} p_0^2}{2\epsilon \hat{F}} \bar{p}^2 \quad (3.24)$$

with $\hat{\psi}_{180}(\bar{p})$ the cut of $\bar{\psi}_s(\bar{p})$ defined in Section 3.2.1.

The equilibrium profile: $d = 0$. In the absence of an electric displacement, (3.23) admits a static solution with $v_{180}^c = 0$. In this case, (3.23) differs from (3.11) only through the effective double-well potential $\hat{\psi}_{180}^c$, which replaces $\hat{\psi}_{180}$. The fact that, physically, the values of \check{p}_1 at infinity given by (3.23)₂ shall remain close to 1 requires that $\hat{\psi}_{180}^c$ differs little from $\hat{\psi}_{180}$, i.e.,

$$\hat{c} = \frac{\hat{\eta} \hat{l} p_0^2}{\epsilon \hat{F}} \ll 1. \quad (3.25)$$

Eq. (3.25) can be seen as an upper bound on \hat{l} , and it is nothing but condition (3.9) with $|e| \sim p_0/\epsilon$, which corresponds to the typical electric field that develops in charged domain walls.

One can show that under the assumption (3.25) the width and interfacial energy of a charged 180° domain wall are approximately equal to those of the corresponding neutral walls given by (3.18) and (3.19), respectively. In other words, width and interfacial energy of a 180° domain wall are essentially independent of the relative orientation of the wall and the polarization directions.

3.2.3. Velocity of 180° domain walls

We proceed to consider the steady-state velocity of 180° domain walls, beginning with neutral ones and later concluding the solution for charged ones. Taking the first integral of (3.11)₁, we express the velocity v_{180} of the domain wall as

$$v_{180} = \frac{\hat{C}_s [\hat{\psi}_{180}(\check{p}_2(+\infty)) - \hat{\psi}_{180}(\check{p}_2(-\infty))] - e [\check{p}_2(+\infty) - \check{p}_2(-\infty)]}{\mu p_0 \int_{-\infty}^{+\infty} (\check{p}_{2,\xi})^2 d\xi}, \quad (3.26)$$

which involves the unknown function $\check{p}_2(\xi)$. Under the assumption that (3.9) is satisfied, the traveling wave problem (3.11) with $e \neq 0$ is a perturbation of the case $e = 0$. Hence, to first order in e/\hat{c}_c the velocity (3.26) can be approximated using the equilibrium profile $\check{p}_{2,\xi}^{eq}$, which yields

$$v_{180} \approx \frac{2e}{\mu p_0 \int_{-\infty}^{+\infty} (\check{p}_{2,\xi}^{eq})^2 d\xi} = \hat{c}_{180} f_{180}, \quad (3.27)$$

where $\hat{c}_{180} = \hat{l}/(2\hat{\eta}\mu p_0^2)$ is a kinetic coefficient, and $f_{180} = 2ep_0$ denotes the value of the driving traction (2.22) for a straight, neutral 180° domain wall.⁶ (In deriving (3.27), we used (3.17) and performed the same change of variable in the integral as in (3.18).) For charged domain walls, the driving traction (2.22) reads $f_{180}^c = 2p_0 d/\epsilon$. One can show that, under the assumption (3.25), the linear kinetic relation (3.27) holds for charged domain walls as well, where it reads $v_{180}^c \approx \hat{c}_{180} f_{180}^c$. We point out that the above analysis, of course, presumes that stable motion of a domain wall at constant speed is feasible. While this is realistic for neutral 180° domain walls, the high energy associated with their charged counterparts precludes their stable motion over significant times in general.

⁶ For an analogous derivation with mechanical coupling accounted for, see Indergand et al. (2020).

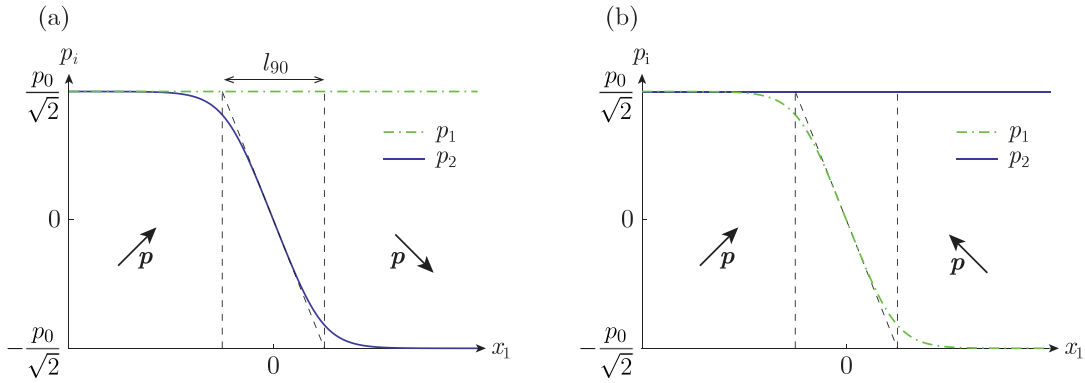


Fig. 4. Polarization profiles of two 90° domain walls: (a) charge-neutral wall, (b) charged wall. The profile in (a) corresponds to the solution of (3.28) for $e = 0$, while that in (b) is for the equilibrium condition $d = 0$.

3.2.4. Equilibrium profile of a neutral 90° domain wall

For studying 90° domain walls, the basis of spontaneous polarizations $\{p_\alpha\}_{\alpha \in \{1,6\}}$ defined in (2.13) and the multi-well potential (3.2) are rotated by $+\pi/4$ around the direction \bar{e}_3 . We consider a 1D head-to-tail 90° domain wall with spontaneous polarization $p(x, t) = p_2(x_1, t)\bar{e}_2 + p_1(x_1, t)\bar{e}_1$, varying from the equilibrium close to $p_0(\bar{e}_1 + \bar{e}_2)/\sqrt{2}$ at $x_1 \rightarrow -\infty$ to the one near $p_0(\bar{e}_1 - \bar{e}_2)/\sqrt{2}$ at $x_1 \rightarrow +\infty$ (see Fig. 4(a)). When looking for an equilibrium or a traveling wave solution of (3.7), the p_1 -component appears to vary across the domain wall. As a result, for Gauss' law (2.5)₁ to be satisfied, the electric field is non-uniform and the polarization profile does not admit an analytical solution.

Therefore, we compute an approximation of the 90° domain wall profile, by assuming that $p_1 = p_0/\sqrt{2}$ remains constant across the interface. This assumption is all the more valid as the 90° barrier in $\bar{\psi}_s$ is located along the straight line connecting two orthogonal polarization states, i.e., $\hat{\chi} = 0.5$ in (3.4). As mentioned in Section 3.2.1, in the phase-field formulation we do not aim for an accurate representation of the polarization profile across domain walls, which justifies considering $\hat{\chi}$ as a numerical parameter that may be freely chosen. Under this assumption, we suppose that we apply a uniform electric field $e = e\bar{e}_2$ while satisfying Gauss' law (2.5)₁. Akin to the 180° domain wall (cf. (3.10)), we seek a traveling wave solution $p_2(x_1, t)$. Inserting (3.10)₂ in (3.7), where $\hat{\psi}_s$ has been properly rotated, yields the following ordinary differential equation for $\check{p}_2(\xi)$:

$$\begin{cases} \hat{C}_s p_0 \check{p}_{2,\xi\xi} + \mu v_{90} p_0 \check{p}_{2,\xi} - \frac{\hat{C}_s}{p_0} \hat{\psi}'_{90}(\check{p}_2) = -e, \\ \hat{\psi}'_{90}(\check{p}_2(\pm\infty)) = e p_0 / \hat{C}_s, \end{cases} \quad (3.28)$$

where v_{90} denotes the corresponding velocity. The only difference to (3.11) lies in the section $\hat{\psi}_{90}(\bar{p}_2)$ of $\bar{\psi}_s(\bar{p})$, given by

$$\hat{\psi}_{90}(\bar{p}_2) = \bar{\psi}_s \left(\frac{1/\sqrt{2} - \bar{p}_2}{\sqrt{2}}, \frac{1/\sqrt{2} + \bar{p}_2}{\sqrt{2}}, 0 \right) = a_0^* + a_1^* \bar{p}_2^2 + a_2^* \bar{p}_2^4 + a_4^* \bar{p}_2^6, \quad (3.29)$$

where

$$\begin{cases} a_0^* = a_0 + a_1/2 + a_2/8 + a_3/16 + a_4/32, & a_1^* = a_1 + 3a_2/2 - a_3/4 + 30a_4/32, \\ a_2^* = a_2/2 + a_3/4 + 60a_4/32, & \text{and } a_4^* = a_4/4. \end{cases} \quad (3.30)$$

Here and in the following, superscript * indicates quantities associated with 90° domain walls.

The equilibrium profile: $e = 0$. For $e = 0$, (3.28) admits an analytical solution $\check{p}_2^{\text{eq}*}(\xi)$ similar to (3.12). Noting that $\check{p}_2^{\text{eq}*}(\xi)$ varies from $-1/\sqrt{2}$ at $\xi \rightarrow -\infty$ to $1/\sqrt{2}$ at $\xi \rightarrow \infty$, we define the width of the 90° domain wall as

$$\hat{l}_{90} = \frac{\sqrt{2}}{\check{p}_2^{\text{eq}*}(0)}. \quad (3.31)$$

The interfacial energy $\hat{\Gamma}_{90}$ has the same definition as (3.14), where now \check{p}^{eq} and p^{sharp} are replaced by the phase-field and sharp-interface profiles of the 90° domain wall, respectively. The derivation (3.16)–(3.18) holds with $\hat{\psi}_{90}(\bar{p}_2)$ in place of $\hat{\psi}_{180}(\bar{p}_2)$, and we obtain

$$\hat{\Gamma}_{90} = \frac{\hat{\eta}^*}{\hat{\eta}} \hat{\Gamma}, \quad (3.32)$$

with $\hat{\eta}^* = \int_{-1/\sqrt{2}}^{1/\sqrt{2}} \hat{\psi}_{90}(\bar{p}_2) d\bar{p} = \int_{-1/\sqrt{2}}^{1/\sqrt{2}} \sqrt{a_0^* + a_1^* \bar{p}^2 + a_2^* \bar{p}^4 + a_4^* \bar{p}^6} d\bar{p}$. In addition, re-writing (3.17) for the 90° domain wall lets us compute $\hat{p}_{2,\xi}^{\text{eq}*}(\xi)$ and derive

$$\hat{l}_{90} = \frac{\hat{l}}{\sqrt{2\hat{h}_{90}}}. \quad (3.33)$$

3.2.5. Equilibrium profile of a charged 90° domain wall

The charged 90° domain wall corresponds to the head-to-head (or tail-to-tail) configuration (see Fig. 4(b)). The transition from neutral to charged 90° domain walls is in all points equivalent to the transition from neutral to charged 180° domain walls. To summarize the main point, for charged 90° domain walls an effective potential

$$\hat{\psi}_{90}^c(p_1) = \hat{\psi}_{90}(p_1) + \frac{\hat{\eta} \hat{l} p_0^2}{2e \hat{l}} p_1^2 \quad (3.34)$$

appears in the traveling wave solution (as in (3.23)). Likewise, the width and interfacial energy of the charged 90° -domain wall are approximately equal to those of the neutral wall under condition (3.25).

3.2.6. Velocity of 90° domain walls

Following the same procedure as for 180° domain walls, the first integral of (3.28) allows us to write v_{90} as an expression analogous to (3.26), where one substitutes $\hat{\psi}_{90}$ for $\hat{\psi}_{180}$. In the regime $e \ll \hat{e}_c$, \hat{p}_2 can be approximated by the equilibrium profile of (3.28), which yields

$$v_{90} \approx \frac{\sqrt{2}e}{\mu p_0 \int_{-\infty}^{+\infty} (\hat{p}_{2,\xi}^{\text{eq}*})^2 d\xi} = \hat{c}_{90} f_{90}, \quad (3.35)$$

where $\hat{c}_{90} = \hat{l}/(2\hat{\eta}^* \mu p_0^2)$ and $f_{90} = \sqrt{2}e p_0$ denote, respectively, the kinetic coefficient and driving traction associated with the 90° domain wall. Under the condition (3.25), the charged 90° domain wall shows the same linear kinetics, with coefficient \hat{c}_{90} , as its neutral counterpart.

3.3. Summary of the properties of 180° and 90° domain walls

Interface energy and width. We have computed exactly the interfacial energy \hat{l} and width \hat{l} of a neutral 180° domain wall and found that these can be arbitrarily prescribed by choosing \hat{C}_g and \hat{C}_s according to (3.20). While we expect to use the physical domain wall energy for \hat{l} , \hat{l} is viewed as a numerical parameter to be chosen in light of considerations discussed above (the more stringent condition on \hat{l} being (3.25)). The charged 180° domain wall has approximately the same equilibrium properties as the neutral one, as long as (3.25) is satisfied.

For the classical head-to-tail 90° domain wall, we have derived an approximation of its interfacial energy \hat{l}_{90} and width \hat{l}_{90} , whose accuracy is best for $\hat{\chi} = 0.5$. The ratio \hat{l}_{90}/\hat{l} can be set according to its physical value by independently setting \hat{h}_{90} . Indeed, (3.32) indicates that this ratio is equal to that of the integrals over the 90° and 180° barriers in the multi-well potential $\bar{\psi}_s(\bar{p})$. Finally, the width \hat{l}_{90} is automatically determined by (3.33) and cannot be set independently. Note that, because we view \hat{l}_{90} as a numerical regularization length, there is no need to prescribe it independently. However, where it is viewed as the physical width of a 90° domain wall, the phase-field framework can be modified such that \hat{l}_{90} is chosen in agreement with its physical value (Flaschel and De Lorenzis, 2020).

Kinetics. We have found that, in the regime $|e| \ll \hat{e}_c$, the Allen–Cahn evolution Eq. (3.6) implies approximately a linear kinetic relation between the velocity of domain walls and the driving traction. In addition, the 180° and 90° domain walls have different kinetic coefficients related by the ratio $\hat{\eta}^*/\hat{\eta}$. Whereas the choice of inverse mobility μ allows us to independently set one kinetic coefficient, the second one is automatically determined by the ratio of interfacial energies (see (3.32) and (3.35)).

This linear kinetics is not representative of the complex nonlinear kinetics of domain walls, which experiments and atomic-scale modeling discussed in Section 2.2 show. Yet, a proper account of the kinetics of domain walls is important in two respects. First, different kinetics yield different microstructure evolution,⁷ hence a proper account of the kinetics is needed for obtaining an accurate description of switching at the mesoscale. Second and more importantly, rate-dependent effects in the macroscopic footprints of polarization switching—such as those discussed in Section 1—are a direct consequence of the kinetics of domain walls. Having a phase-field model that permits domain wall motion with nonlinear kinetics requires us to revise the evolution Eq. (3.6). This is the subject of the general kinetics model introduced in Section 4.

4. General kinetics model

In this section, we introduce a new phase-field model for ferroelectrics, which regularizes the sharp-interface model of Section 2 while conserving nonlinear and independent kinetics for 180° and 90° domain walls. We first formulate the model in Section 4.1,

⁷ Consider, e.g., how an initially ellipsoidal nucleus evolves, keeping in mind that the driving traction is nonuniform over the surface of the nucleus.

before computing analytical traveling wave solutions for 180° and 90° domain walls in Section 4.2. The main properties of straight domain walls are summarized and compared to those of the Allen–Cahn model in Section 4.3. A numerical implementation of the present model will be performed in Part II, which must also account for the special behavior of curved domain walls and triple and quadruple points at which multiple phases meet.

4.1. Model formulation

A regularized electric enthalpy. In the general kinetics model, we use a multi-phase field $\varphi(\mathbf{x}, t) \in (0, 1)^N$, where N is the number of domains, and for tetragonal ferroelectrics we use $N = 6$. Let φ_α denote the volume fraction of domain α , so that the spontaneous polarization is defined as

$$p(\mathbf{x}, t) = \tilde{p}(\varphi(\mathbf{x}, t)) = \sum_{\alpha=1}^6 \varphi_\alpha(\mathbf{x}, t) p_\alpha. \tag{4.1}$$

We introduce the electric enthalpy Ψ , which regularizes $W(e, p)$, as

$$\Psi(e, \varphi, \nabla\varphi) = \underbrace{-\frac{\epsilon}{2} e \cdot e - \left(\sum_{\alpha=1}^6 \varphi_\alpha p_\alpha \right) \cdot e}_{W(e, \tilde{p}(\varphi))} + C_s \psi_s(\varphi) + p_0^2 C_g \sum_{\alpha=1}^6 |\nabla\varphi_\alpha|^2, \tag{4.2}$$

where C_s and C_g are two positive constants, and ψ_s is a multi-well potential with minima at (or in the neighborhood of) the six values of φ associated with the spontaneous polarization states: $\varphi = (1, 0, \dots, 0)$ and its permutations. There exists several possibilities for the choice of ψ_s , and the optimal one depends on the values of the physical parameters. Here, we discuss two simple forms for ψ_s that admit analytical insight, even though the framework is sufficiently general to allow for other choices as well. For analytical derivations, we introduce

$$\psi_s^{(n)}(\varphi) = \omega^{(n)}(\varphi) + \tau(\varphi), \tag{4.3}$$

with

$$\begin{cases} \omega^{(n)}(\varphi) = 4^n \left(\sum_{\{\alpha, \beta\} \in \mathcal{I}_{180}} |\varphi_\alpha|^n |\varphi_\beta|^n + h_{90} \sum_{\{\alpha, \beta\} \in \mathcal{I}_{90}} |\varphi_\alpha|^n |\varphi_\beta|^n \right), \\ \tau(\varphi) = C_t \sum_{\{\alpha, \beta, \gamma\} \in \mathcal{T}} |\varphi_\alpha| |\varphi_\beta| |\varphi_\gamma|, \end{cases} \tag{4.4}$$

where h_{90} denotes the height of the 90° barrier relative to the 180° barrier, $C_t > 0$ is a numerical parameter and $\mathcal{T} = \{(\alpha, \beta, \gamma) : \alpha, \beta, \gamma \in D, \alpha \neq \beta \neq \gamma\}$, and we consider $n = 1$ and $n = 2$.

As we shall see below, $\psi_s^{(1)}$ has the advantage that the effective potential for charged walls has minima that remain at the spontaneous polarization states but the drawback of presenting discontinuities in its derivatives. On the other hand, with $\psi_s^{(2)}$ discontinuities in the derivatives are absent, but the zeros and minima of the effective potential for charged walls are shifted from the spontaneous polarization states.

The contribution $\tau(\varphi)$ to $\psi_s^{(n)}(\varphi)$ serves to avoid the spurious appearance of a third phase in a domain wall by penalizing the simultaneous occurrence of more than two phases.⁸ Despite the apparently complicated expression of $\psi_s^{(n)}$, its section $\psi_{180}(\varphi) = \psi_s^{(n)}(\varphi, 1 - \varphi, 0, 0, 0, 0)$ associated with a 180° domain wall reduces to

$$\psi_{180}(\varphi) = 4^n |\varphi|^n |1 - \varphi|^n, \tag{4.5}$$

which is a double-obstacle ($n = 1$) or double-well ($n = 2$) potential of unitary barrier. Similarly, the section $\psi_{90}(\varphi) = \psi_s^{(n)}(\varphi, 0, 1 - \varphi, 0, 0, 0)$ associated with a 90° domain wall reads

$$\psi_{90}(\varphi) = 4^n h_{90} |\varphi|^n |1 - \varphi|^n. \tag{4.6}$$

Governing equations. Whereas Gauss’ law (2.5)₁ and Faraday’s Eq. (2.6)₁ apply without change, the main difference between our general kinetics model and the classical phase-field model resides in the evolution equation for the multi-phase field,⁹ which we define as

$$\dot{\varphi}_\alpha = \sum_{\beta=1}^6 \sqrt{|\nabla\varphi_\alpha \cdot \nabla\varphi_\beta|} G_{\beta\alpha}(h_{\beta \rightarrow \alpha}) \quad \text{for } \alpha = 1 \dots 6, \tag{4.7}$$

⁸ Note that if one chooses to write the triple term as a product of the squares of the φ_α instead of their absolute values, then this term does not fulfill its function, which is to strictly keep, within domain walls, any third phase at zero.

⁹ We note that, by construction of (4.7), φ_α only evolves in the diffuse-interface region, where its gradient is non-zero but remains constant in the bulk phases. As we will report in a forthcoming publication, the numerical implementation of (4.7) furnishes a seamless transition between these two domains (i.e., $\nabla\varphi_\alpha = 0$ and $\nabla\varphi_\alpha \neq 0$).

where $G_{\alpha\beta} = G_{\beta\alpha} : \mathbb{R} \rightarrow \mathbb{R}$ is the kinetic function associated with the transformation between phases α and β , and $h_{\beta \rightarrow \alpha}$ denotes the relative variational derivative of Ψ ,

$$h_{\beta \rightarrow \alpha}(\mathbf{e}, \boldsymbol{\varphi}, \nabla^2 \boldsymbol{\varphi}) = -\frac{\delta \Psi}{\delta \varphi_\alpha} + \frac{\delta \Psi}{\delta \varphi_\beta} = -\frac{\partial \Psi}{\partial \varphi_\alpha} + \frac{\partial \Psi}{\partial \varphi_\beta} + \operatorname{div} \left(\frac{\partial \Psi}{\partial \nabla \varphi_\alpha} - \frac{\partial \Psi}{\partial \nabla \varphi_\beta} \right). \quad (4.8)$$

Inserting (4.2) in (4.8) yields

$$h_{\beta \rightarrow \alpha}(\mathbf{e}, \boldsymbol{\varphi}, \nabla^2 \boldsymbol{\varphi}) = \mathbf{e} \cdot (\mathbf{p}_\alpha - \mathbf{p}_\beta) - C_s \left(\frac{\partial \psi_s}{\partial \varphi_\alpha} - \frac{\partial \psi_s}{\partial \varphi_\beta} \right) + 2p_0^2 C_g (\nabla^2 \varphi_\alpha - \nabla^2 \varphi_\beta). \quad (4.9)$$

For tetragonal ferroelectrics, we distinguish between two types of transformations: the motion of 180° and 90° domain walls. Hence, we take the function $G_{\alpha\beta}$ as G_{180} for $\{\alpha, \beta\} \in I_{180}$ and G_{90} for $\{\alpha, \beta\} \in I_{90}$. By the second law of thermodynamics, G_{180} and G_{90} must be odd functions that satisfy the constraints

$$G_{180}(h)h \geq 0 \quad \text{and} \quad G_{90}(h)h \geq 0 \quad \text{for all } h \in \mathbb{R}. \quad (4.10)$$

Indeed, as we will show in Section 4.2, these two functions specify the kinetic relations of 180° and 90° domain walls in the sense of (2.11) in the sharp-interface model. Condition (4.10), like (2.12), ensures the positivity of the dissipation in the phase-field model.

Eq. (4.7) is used with an initial condition $\boldsymbol{\varphi}(\mathbf{x}, 0)$ that satisfies¹⁰

$$\sum_{\alpha=1}^6 \varphi_\alpha(\mathbf{x}, 0) = 1 \quad \text{for all } \mathbf{x} \in \Omega. \quad (4.11)$$

Using that G_{180} and G_{90} are odd functions, one can show that (4.7) guarantees $\sum_{\alpha=1}^6 \dot{\varphi}_\alpha = 0$, whereby (4.11) holds for all times if it holds for the initial condition.

Comparison with other phase-field models with nonlinear kinetics. The evolution Eq. (4.7) is an extension to multiple phases of the hybrid model introduced by Alber and Zhu (2013) in the setting of stress-driven phase transformations between two phases. In particular, in a domain wall between two phases, say $\alpha = 1$ and $\beta = 2$, for which $\varphi_2(\mathbf{x}, 0) = 1 - \varphi_1(\mathbf{x}, 0)$ and $\varphi_\gamma(\mathbf{x}, 0) = 0$ for $\gamma = 3 \dots 6$, (4.7) reduces to

$$\begin{cases} \dot{\varphi}_1 = |\nabla \varphi_1| G_{180}(h_{2 \rightarrow 1}), & \varphi_2 = 1 - \varphi_1, \\ \dot{\varphi}_\gamma = 0 & \text{for } \gamma = 3 \dots 6. \end{cases} \quad (4.12)$$

(4.12)₁ is akin to Equation (1.3) of Alber and Zhu (2013) (there formulated in the context of stress-driven transformations). Note that the double-well potential proposed by Alber and Zhu (2013) is a variation of (4.5).

Similarly, (4.12)₁ is reminiscent of the evolution Eq. (2.7) of Agrawal and Dayal (2015a), which derives from a conservation law for the number of interfaces. However, in their work, the free-energy density was regularized differently from ours and that of Alber and Zhu (2013), without resort to a double-well potential but through a regularized Heaviside function. Further, Agrawal and Dayal (2015a) included a source term in the evolution equation for φ to account for the nucleation of new domains. In our case, in the absence of such a source term, (4.7) only propagates domain walls, while for nucleation new domains shall be introduced explicitly according to an appropriate criterion, which we do not discuss here.

4.2. Analytical solutions for 180° and 90° domain walls

In this section, we compute analytical traveling wave solutions for the propagation of straight 180° and 90° domain walls as obtained from the general kinetics model. In doing so, we follow in one dimension a procedure outlined, e.g., in Fried and Gurtin (1994) for Allen–Cahn-type models. In particular, we demonstrate the nonlinear kinetics of domain walls that the general kinetics model permits, and we compare our findings to the Allen–Cahn model.

4.2.1. Neutral 180° domain wall profile and kinetics

We consider a straight 180° domain wall with polarization $\mathbf{p}(x_1, t) = p_2(x_1, t)\mathbf{e}_2$, separating the spontaneous polarizations $\mathbf{p}_3 = p_0\mathbf{e}_2$ at $x_1 \rightarrow -\infty$ and $\mathbf{p}_4 = -p_0\mathbf{e}_2$ at $x_1 \rightarrow +\infty$ (see Fig. 5(b)). The phase fields not related to the two phases under consideration, i.e., φ_γ for $\gamma \in \{1, 2, 5, 6\}$ are initially assumed identically zero and, in view of (4.7), remain zero for all time.¹¹ Hence, only the phase fields φ_3 and φ_4 , satisfying $\varphi_3 + \varphi_4 = 1$, are non-trivial. To simplify notation, we define $\varphi = \varphi_4$ to write the polarization profile as

$$\mathbf{p}_{180}(\varphi) = p_0(1 - 2\varphi)\mathbf{e}_2. \quad (4.13)$$

¹⁰ One typically uses an initial condition describing a given arrangements of domains, within each of which, one φ_α is set to one and the other $\{\varphi_\beta\}_{\beta \neq \alpha}$ are set to zero with sharp transitions between domains.

¹¹ Note that, unlike with the classical Allen–Cahn evolution equation, (4.7) never leads to the nucleation of a new phase (say, phase α) irrespective of the value of the electric field (and associated driving term $h_{\beta \rightarrow \alpha}$). This is due to the term $\nabla \varphi_\alpha$, which vanishes identically when the initial condition for φ_α is set to zero in the entire simulation domain. Accordingly, with this model a separate explicit nucleation criterion is required to account for nucleation events.

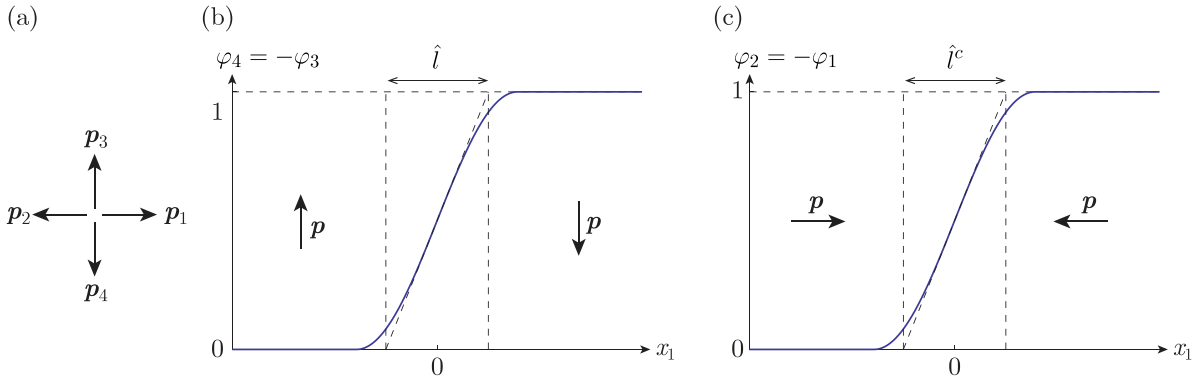


Fig. 5. (a) Basis of spontaneous polarization states. Phase-field profiles of two 180° domain walls: (b) charge-neutral wall, (c) charged wall. The profile in (b) corresponds to (4.26) with $\varphi = \varphi_4$ and that in (c) to the solution of (4.34) with $\varphi = \varphi_2$.

As in Section 3.2.1, we can assume a uniform electric field $e = e\bar{e}_2$ while satisfying Gauss' law (2.5)₁. The evolution Eqs. (4.7) for φ_3 and φ_4 are identical and are written as an equation for φ :

$$\dot{\varphi} = \left| \varphi_{,x_1} \right| G_{180}(h_{3\rightarrow 4}(\varphi, \varphi_{,x_1 x_1})), \tag{4.14}$$

where the driving force (4.9) reads

$$h_{3\rightarrow 4}(\varphi, \varphi_{,x_1 x_1}) = -2p_0 e - C_s \psi'_{180}(\varphi) + 4C_g p_0^2 \varphi_{,x_1 x_1}. \tag{4.15}$$

As in Section 3.2, we seek a traveling wave solution of (4.14) of the form

$$\varphi(x_1, t) = \check{\varphi}(x_1 - v_{180}t) \tag{4.16}$$

and introduce $\xi = x_1 - v_{180}t$. Inserting (4.16) into (4.14) yields

$$-v_{180} \check{\varphi}_{,\xi} = \left| \check{\varphi}_{,\xi} \right| G_{180}(h_{3\rightarrow 4}(\check{\varphi}, \check{\varphi}_{,\xi\xi})). \tag{4.17}$$

Without loss of generality, assuming that the solution satisfies $\check{\varphi}_{,\xi} \geq 0$ for all ξ , (4.17) simplifies to

$$\begin{cases} v_{180} = G_{180} \left(2p_0 e + C_s \psi'_{180}(\check{\varphi}) - 4C_g p_0^2 \check{\varphi}_{,\xi\xi} \right), \\ \check{\varphi}(-\infty) = 0, \quad \check{\varphi}(+\infty) = 1, \quad \check{\varphi}_{,\xi}(\pm\infty) = 0, \end{cases} \tag{4.18}$$

where we have appended in (4.18)_{2,3,4} the far-field boundary conditions on $\check{\varphi}$ consistent with the polarization states assumed at infinity. Note that (4.18)_{2,3,4} are in fact two boundary conditions, since the vanishing spatial derivative of $\check{\varphi}$ at infinity is inherited from the former two conditions (4.18)_{2,3}. For a given applied electric field e , (4.18) can be solved for $(v_{180}, \check{\varphi}(\xi))$. We assume here that G_{180} is monotonous on \mathbb{R} and hence invertible, and we write its inverse as G_{180}^{-1} . Hence, (4.18)₁ is rewritten as

$$2p_0 e + C_s \psi'_{180}(\check{\varphi}) - 4C_g p_0^2 \check{\varphi}_{,\xi\xi} = G_{180}^{-1}(v_{180}). \tag{4.19}$$

We compute the first integral of (4.19) by multiplying by $\check{\varphi}_{,\xi}$ and integrating with the condition at $-\infty$, which yields:

$$[2p_0 e - G_{180}^{-1}(v_{180})] \check{\varphi} + C_s \psi_{180}(\check{\varphi}) - 2C_g p_0^2 (\check{\varphi}_{,\xi})^2 = 0, \tag{4.20}$$

where we have used the fact that $\psi_{180}(0) = 0$. Further prescribing condition (4.18)_{3,4} at $+\infty$ and noting that $\psi_{180}(1) = 0$, requires that

$$2p_0 e = G_{180}^{-1}(v_{180}) \quad \Rightarrow \quad v_{180} = G_{180}(2p_0 e), \tag{4.21}$$

and (4.20) reduces to an equation for $\check{\varphi}(\xi)$ only:

$$C_s \psi_{180}(\check{\varphi}) - 2C_g p_0^2 (\check{\varphi}_{,\xi})^2 = 0. \tag{4.22}$$

Eq. (4.22) is similar to (3.17) in the Allen–Cahn model. However, note that (4.22) holds for all e . Therefore, the profile is the same at equilibrium ($e = 0$) and with an applied external electric field ($e \neq 0$). In particular, the polarization inside domains remains exactly equal to the spontaneous polarizations even under non-zero electric fields. This is in contrast to the Allen–Cahn model, whose equilibrium polarization profile is given by (3.17). That equation, however, only provides an approximation of the profile in the presence of an electric field, which is valid only under condition (3.9).

Adopting definitions for the interfacial energy,

$$\Gamma = \int_{-\infty}^{+\infty} \Psi(\mathbf{e}, \check{\varphi}, \nabla \check{\varphi}) d\xi - \int_{-\infty}^{+\infty} W(\mathbf{e}, \mathbf{p}^{\text{sharp}}) d\xi, \tag{4.23}$$

and the interfacial width,

$$l = 1/\check{\varphi}_{,\xi}(0), \tag{4.24}$$

equivalent to those of Section 3.2, one can show using (4.22) that these quantities are given by expressions analogous to (3.18) and (3.19), namely,

$$\Gamma = \eta p_0 \sqrt{2C_s C_g} \quad \text{and} \quad l = p_0 \sqrt{2C_g/C_s}, \tag{4.25}$$

with $\eta = 2 \int_0^1 \sqrt{\psi_{180}(\varphi)} d\varphi$. In particular, with ψ_{180} given by (4.5) we obtain $\eta = \pi/2$ for $n = 1$ and $\eta = 4/3$ for $n = 2$.

By setting the origin to $\check{\varphi}(0) = 1/2$, (4.22) forms an initial value problem for $\check{\varphi}(\xi)$, starting at $\xi = 0$ and to be solved for both increasing and decreasing ξ . Its integration yields

$$\check{\varphi}(\xi) = \begin{cases} 0 & \text{for } \xi < -\pi l/4, \\ \cos^2\left(\frac{\pi}{4} - \frac{\xi}{l}\right) & \text{for } -\pi l/4 \leq \xi \leq \pi l/4, \\ 1 & \text{for } \xi > \pi l/4, \end{cases} \tag{4.26}$$

when using $\psi_s^{(1)}$ and

$$\check{\varphi}(\xi) = \frac{e^{4\xi/l}}{1 + e^{4\xi/l}}, \tag{4.27}$$

for $\psi_s^{(2)}$. Note that with $\psi_s^{(1)}$ the diffuse interface representing the domain wall is localized in the interval $(-\pi l/4, \pi l/4)$.

With regards to kinetics, in (4.21)₂ $2p_0 e = f$ corresponds to the driving traction (2.22) of the straight, neutral 180° domain wall in the sharp-interface model. Hence, G_{180} directly provides the kinetic relation for 180° domain walls (i.e., (2.11) in the sharp-interface model). Therefore, the general kinetic model allows us to choose the kinetic relation arbitrarily (in the set of monotonously increasing odd functions that satisfy (4.10)). In particular, for modeling ferroelectrics, a physics-based choice for G_{180} is to adopt the functional form (2.19) derived from experiments. In addition, note that for the neutral 180° domain wall, the kinetic relation is exactly given by (4.21)₂ for all e , whereas with the Allen–Cahn model the linear kinetic relation (3.27) is only an approximation valid under the condition (3.9).

4.2.2. Charged 180° domain wall profile and kinetics

We consider the same charged domain wall as in Section 3.2.2, i.e., $\mathbf{p}(x_1, t) = p_1(x_1, t)\tilde{\mathbf{e}}_1$, varying between $\mathbf{p}_1 = p_0\tilde{\mathbf{e}}_1$ at $x_1 \rightarrow -\infty$ and $\mathbf{p}_2 = -p_0\tilde{\mathbf{e}}_1$ at $x_1 \rightarrow +\infty$ (see Fig. 5(c)). For the same reasons as those invoked in Section 4.2.1, only φ_1 and φ_2 are non-identically zero, and they satisfy $\varphi_1 + \varphi_2 = 1$. Using the single phase field $\varphi = \varphi_2$, we rewrite the polarization as

$$\mathbf{p}_{180}^c(\varphi) = p_0(1 - 2\varphi)\tilde{\mathbf{e}}_1. \tag{4.28}$$

Further, with the same assumptions on the electric field and electric displacement as in Section 3.2.2, the electric field is given by (3.21). We write the evolution equations for φ_1 and φ_2 as an equation for φ ,

$$\dot{\varphi} = \left| \varphi_{,x_1} \right| G_{180}(h_{1 \rightarrow 2}(\varphi, \varphi_{,x_1 x_1})). \tag{4.29}$$

By combining (4.9), (3.21) and (4.28), $h_{1 \rightarrow 2}$ becomes

$$h_{1 \rightarrow 2}(\varphi, \varphi_{,x_1 x_1}) = -\frac{2p_0 d}{\epsilon} - C_s \underbrace{\left(\psi'_{180}(\varphi) - \frac{2p_0^2}{\epsilon C_s} (1 - 2\varphi) \right)}_{\psi_{180}^c(\varphi)} + 4C_g p_0^2 \varphi_{,x_1 x_1}, \tag{4.30}$$

with $\psi_{180}^c(\varphi)$ the effective double-well potential for charged 180° domain walls defined by

$$\psi_{180}^c(\varphi) = \psi_{180}(\varphi) - 2\zeta\varphi(1 - \varphi), \tag{4.31}$$

with

$$\zeta = \frac{p_0^2}{\epsilon C_s} = \frac{\eta l p_0^2}{\epsilon \Gamma}. \tag{4.32}$$

Parameter ζ is equivalent to $\hat{\zeta}$ involved in (3.25) in the Allen–Cahn model and represents the ratio of the electric field p_0/ϵ induced by Gauss' law in a charged 180° domain wall to the numerical characteristic electric field $e_c = \Gamma/(\eta l p_0)$. As is apparent from Fig. 6, the effective potential for $n = 1$ is indeed a double-obstacle potential as long as $\zeta < 2$ with minima and zeros coinciding at $\varphi = 0$ and $\varphi = 1$. In contrast, for $n = 2$, minima of the potential are shifted inwards and we denote by $\varphi_m(\zeta)$ the smallest minimizer of ψ_{180}^c .

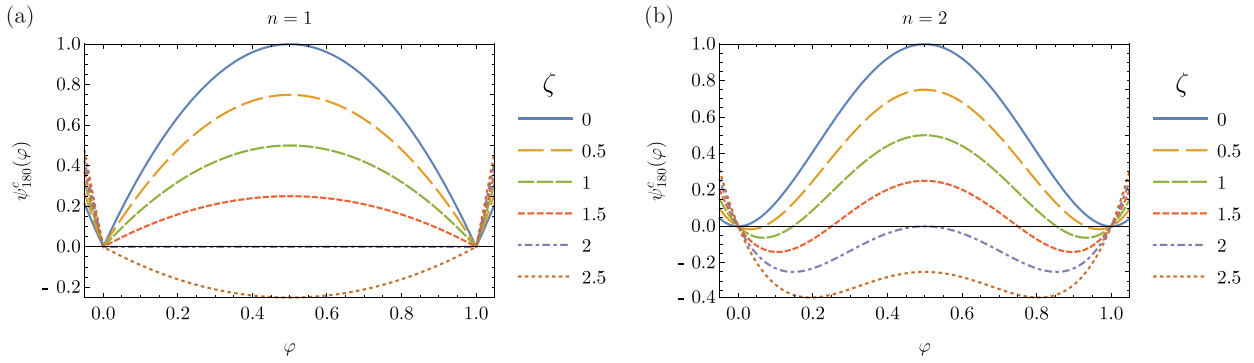


Fig. 6. Potential $\psi_{180}^c(\varphi)$ defined in (4.31) for different values of ζ with (a) $n = 1$ and (b) $n = 2$ in the original double-well (4.5).

We look for a traveling wave solution of (4.29) of the form

$$\varphi(x_1, t) = \check{\varphi}(x_1 - v_{180}^c t) \tag{4.33}$$

while assuming, without loss of generality, $\check{\varphi}_{,\xi} \geq 0$. Inserting (4.33) into (4.29), we obtain the equation for $(v_{180}^c, \check{\varphi}(\xi))$:

$$v_{180}^c = G_{180} \left(\frac{2p_0 d}{\epsilon} + C_s \psi_{180}^{c'}(\check{\varphi}) - 4C_g p_0^2 \check{\varphi}_{,\xi\xi} \right). \tag{4.34}$$

Case $n = 1$. In the case $n = 1$, one can construct a solution that satisfies the far-field boundary conditions

$$\check{\varphi}(-\infty) = 0, \quad \check{\varphi}(+\infty) = 1, \quad \check{\varphi}_{,\xi}(\pm\infty) = 0. \tag{4.35}$$

Following a derivation strictly analogous to that for neutral 180° domain walls, one can show that the solution of (4.34) supplemented by (4.35) is a topological soliton moving at velocity $v_{180}^c = G_{180}(2p_0 d/\epsilon)$ (with $2p_0 d/\epsilon$ the sharp-interface driving traction (2.22) of a 180° charged wall). The polarization profile is given by (4.26), if the width

$$l^c = l \left(1 - \frac{\zeta}{2} \right)^{-1/2} \tag{4.36}$$

is substituted for l and the interfacial energy is replaced by

$$\Gamma^c = \Gamma \left(1 - \frac{\zeta}{2} \right)^{1/2}. \tag{4.37}$$

While we see from (4.37) that the regularization introduces a modification of the interfacial energy between neutral and charged domain walls, this turns out not to be an issue in practice. From the point of view of the sharp-interface model, an accurate interfacial energy is important, as it contributes to the driving force f through the effect of curvature in (2.22). In practice we have $\zeta < 2$, as required to have a double-obstacle potential. If ζ is low (typically $\zeta < 0.2$) the change in interfacial energy remains less than 10%. Therefore we expect an accurate account of the curvature contribution in (2.22). By contrast, when ζ is large (typically $\zeta = 1 - 1.5$), the artificial change in interfacial energy becomes larger (up to 50% relative change for $\zeta = 1.5$). However, when ζ is large, Γ is small (see (4.32)), and the contribution $\gamma\kappa$ to the driving force (2.22) becomes negligible—compared to that of the bulk energies—almost everywhere except in local zones of high curvature. Hence, in this case the regularization introduces significant variations in Γ , but these are of little importance. In practice, the contribution of curvature of domain walls to the evolution of domains is mostly negligible in ferroelectric switching as well as in other solid–solid phase transformations. Therefore, the fact that the general kinetic model with $n = 1$ allows us to take large values of ζ up to 1.5 is a significant advantage over the Allen–Cahn model and over general kinetic model with $n = 2$ (discussed below), which both require $\zeta \ll 1$ (typically $\zeta < 0.2$).

Case $n = 2$. For $n = 2$ the far-field boundary conditions (4.35) do not permit to build a traveling wave solution. Instead, one needs to impose

$$\check{\varphi}(-\infty) = \varphi_l, \quad \check{\varphi}(+\infty) = 1 - \varphi_l, \quad \check{\varphi}_{,\xi}(\pm\infty) = 0 \tag{4.38}$$

with φ_l a value that satisfies $\psi_{180}^{c'}(\varphi_l) > 0$, i.e., $\varphi_m < \varphi_l < 1/2$. Numerical simulations confirm that away from the interface, if φ takes initial values at 0 and 1, it evolves toward the solution of (take $h_{1 \rightarrow 2} = 0$ with $\varphi_{,x_1 x_1} = 0$ in (4.30))

$$\psi_{180}^{c'}(\varphi) = -2p_0 e / C_s, \tag{4.39}$$

where $e = \mathcal{O}(p_0/\epsilon)$ is the locally uniform (away from the interface) electric field. This implies that ζ shall satisfy $\zeta \ll 1$ to ensure polarization remains close to the spontaneous polarization states. The traveling wave solution that can be constructed with φ varying from φ_l to $1 - \varphi_l$, although not connecting $\varphi = 0$ to $\varphi = 1$, has exactly the velocity expected from the target sharp interface model, $v_{180}^c = G_{180}(2p_0 d/\epsilon)$. In numerical simulations, diffuse interfaces evolve with the velocity predicted here and connect to the values of φ within phases through transient profiles.

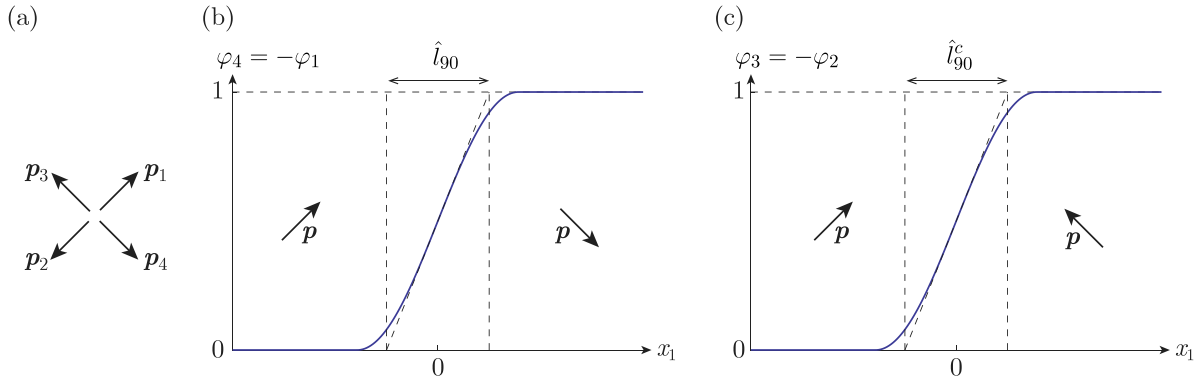


Fig. 7. (a) Basis of spontaneous polarization states. Phase-field profiles of two 90° domain walls: (b) charge-neutral wall; (c) charged wall, with properties discussed in Section 4.2.3.

4.2.3. 90° domain walls: profile and kinetics

Neutral domain wall. As in Section 3.2.4, the basis of spontaneous polarizations $\{p_\alpha\}_{\alpha \in \{1,6\}}$ defined in (2.13) is rotated by $+\pi/4$ around the \bar{e}_3 -axis. Consider, e.g., the same 1D head-to-tail domain wall as in Section 3.2.4, i.e., between $p_1 = p_0/\sqrt{2}(\bar{e}_1 + \bar{e}_2)$ at $x_1 \rightarrow -\infty$ and $p_4 = p_0/\sqrt{2}(\bar{e}_1 - \bar{e}_2)$ at $x_1 \rightarrow +\infty$ (see Fig. 7(b)). This wall involves φ_1 and φ_4 satisfying $\varphi_1 + \varphi_4 = 0$, while the other phase fields are identically zero. For simplicity we define $\varphi = \varphi_4$. A specialty of the polarization profile obtained from the general kinetics model is that the rotation of the polarization vector across the wall is predetermined by the decomposition (4.1), i.e.,

$$p_{90}(\varphi) = \frac{p_0}{\sqrt{2}} [\bar{e}_1 + (1 - 2\varphi)\bar{e}_2], \tag{4.40}$$

whereby p rotates with a constant component along \bar{e}_1 . This is in contrast to the rotation of the polarization vector resulting from the Allen–Cahn model, which depends on the multi-well potential $\bar{\psi}_s$ given by (3.2), in particular on the parameter $\hat{\chi}$ introduced in (3.4), which determines the location of the 90° barrier.

As a consequence, whereas in Section 3.2.4 the computed properties (wall width and interfacial energy) of the neutral 90° domain wall are only approximations relying on the assumption that the p_1 -component remains constant (a reasonable assumption for $\hat{\chi} = 0.5$), for the general kinetics model these same properties characterize the neutral 90° domain wall exactly.

Under the application of a uniform electric field $e = e\bar{e}_2$ and with a derivation in all points analogous to that developed in Section 4.2.1, we conclude that the 90° domain wall can be described by a traveling wave solution,

$$\varphi(x_1, t) = \check{\varphi}(x_1 - v_{90}t), \tag{4.41}$$

where $\xi = x_1 - v_{90}t$ and v_{90} is the velocity of the 90° domain wall. Under the assumption that function G_{90} is monotonous on \mathbb{R} , one can show that, akin to (4.21),

$$v_{90} = G_{90}(\sqrt{2}p_0e), \tag{4.42}$$

where $\sqrt{2}p_0e$ corresponds to the driving traction (2.22) associated with the 90° configuration under consideration. Again, the polarization profile is given by (4.26) and (4.27) with a width $l_{90} = l/\sqrt{h_{90}}$ replacing l and an interfacial energy $\Gamma_{90} = \sqrt{h_{90}}\Gamma$, which can be set to its physical value through a proper choice of h_{90} .

Charged domain wall. The transition from the neutral to the charged 90° domain wall (see Fig. 7(c)) shows the same features as the analogous transition for the 180° domain wall. We discuss specifically the case $n = 1$, for which the kinetic relation is exactly given by the function G_{90} , provided that $\zeta < 2\sqrt{2}h_{90}$ is satisfied (like $\zeta < 2$ for 180° walls). The modified values of interfacial width and energy due to the regularization with $n = 1$ are

$$l_{90}^c = l_{90} \left(1 - \frac{\zeta}{2\sqrt{2}h_{90}} \right)^{-1/2} \quad \text{and} \quad \Gamma_{90}^c = \Gamma_{90} \left(1 - \frac{\zeta}{2\sqrt{2}h_{90}} \right)^{1/2}. \tag{4.43}$$

4.3. Summary of the properties of 180° and 90° domain walls

Interface energy and width. We have computed exactly the interfacial energy and width of the different types of domain walls obtained with the general kinetics model. The expressions are analogous to those of the Allen–Cahn model. In particular, the choice of C_s and C_g allows us to set independently the interfacial energy and width (i.e., the regularization length) of 180° domain walls, while h_{90} determines the ratio of interfacial energy of 90° and 180° domain walls. Furthermore, the expressions for the interfacial properties of walls remain exact under an applied electric field, in contrast to the Allen–Cahn model for which one only has approximate expressions of interfacial properties when domain walls are not in equilibrium. This is notably related to the fact

that, with the general kinetics model, values of the spontaneous polarization within domains are unchanged in the presence of an electric field.

Lastly, a special feature of the general kinetics model is that for 90° domain walls the rotation of the polarization occurs with one of its components kept constant, as predetermined by the decomposition (4.1). This is in contrast to what happens with the Allen–Cahn model, where the rotation of p depends on the location of the 90° barrier, given by $\hat{\chi}$ in the multi-well potential.

Kinetics. We have found that for straight domain walls the general kinetics model allows us to prescribe independently the kinetics of 180° and 90° domain walls and that these kinetic relations can be nonlinear. The kinetic relations (2.11) between the velocity of the interface (velocity of the traveling wave solutions) and the driving traction (computed from the values of the fields away from the diffuse interface) are defined through the functions G_{180} and G_{90} for 180° and 90° domain walls, respectively.

Interestingly, in the general kinetics model, the kinetic relation of straight walls is exactly given by G_{180} and G_{90} irrespective of the regularization length l , provided that $\zeta < 2$ and $\zeta < 2\sqrt{2}h_{90}$ are satisfied (i.e., l is smaller than a critical length determined by the material parameters). This is in contrast to the Allen–Cahn model, for which the accuracy of the linear kinetic relations (3.27) and (3.35) for straight 180° and 90° domain walls decreases as the regularization length l increases (because, as l increases with constant material parameters, e_c in (3.9) decreases, which reduces the accuracy of (3.27) and (3.35)).

As will be discussed in Part II of this study, when it comes to *curved domain walls*, the general kinetics model allows us to introduce the kinetic relations via G_{180} and G_{90} in an exact sense only in the limit of $l \rightarrow 0$ (see also the asymptotic analysis of Alber and Zhu (2013) for the phase-field model that inspired the present general kinetics model).

5. Conclusion

We have formulated a phase-field model for ferroelectrics that permits domain wall evolution with nonlinear kinetics, which we term the *general kinetics model*. Nonlinear domain wall kinetics is a crucial feature for properly accounting for rate effects in ferroelectric switching and is nonetheless absent from existing diffuse-interface ferroelectrics models. Seen in the general class of phase-field models for structural transformations (which includes switching between ferroelectric variants, twinning, solid–solid phase transformations), the general kinetics model is, to the best of our knowledge, the first diffuse-interface model with arbitrary nonlinear interface kinetics formulated for systems with multiple (i.e., more than two) phases. It has been devised as an extension to multiple phases of the *hybrid model* of Alber and Zhu (2013) (adapted here to the setting of ferroelectric switching).

To shed light on the new features of the general kinetics model, as compared to the classical Allen–Cahn-based phase-field model, we have worked in the simplified setting of rigid ferroelectrics, an assumption which only accounts for the electrostatic contribution to domain evolution and neglects the mechanical one.¹² In this setting, we have compared two regularized models: the classical Allen–Cahn-based phase-field model and the newly introduced general kinetics model. By computing analytical traveling wave solutions for the propagation of straight 180° and 90° domain walls, both neutral and charged, we have established the following properties of the two phase-field models:

1. *Interfacial width and energy:* For both diffuse-interface models, the numerical parameters associated with the regularization of the electric enthalpy permit to set independently the interfacial energy of 180° and 90° domain walls and the width of 180° domain walls. While the former are material parameters characterizing the walls, we see the latter as a *numerical regularization length*, whose choice is limited by practical constraints. With the Allen–Cahn model, interfacial width and energy weakly depend on the applied electric field and remain approximately constant in the regime (3.9) of $|e| \ll \hat{e}_c$, with $\hat{e}_c = \hat{F}/(\hat{\eta}\hat{l}p_0)$ a numerical characteristic electric field dependent on the regularization length \hat{l} . By contrast, with the general kinetics model, the interfacial width and energy of neutral domain walls are constant and independent of the applied electric field. As for charged domain walls (which encounter nonuniform electric fields induced by Gauss' law), both models require, for wall properties to remain approximately independent of the regularization length, that the magnitude of the electric field associated with Gauss' law remains small compared to a characteristic electric field. This translates into an upper bound on \hat{l} and l , which reads as $\hat{\eta}\hat{l}p_0^2/(\epsilon\hat{F}) \ll 1$ (see (3.25)) for the Allen–Cahn model and $\eta lp_0^2/(\epsilon\Gamma) \ll 1$ for the general kinetics model (with quantitative estimates given in Sections 4.2.2 and 4.2.3).
2. *Kinetics of domain walls:* For the motion of straight 180° and 90° domain walls, we have shown that the Allen–Cahn formulation furnishes a regularization of a sharp-interface model with a linear kinetic relation between wall velocity and associated driving traction. In addition, while the kinetic coefficient associated with one type of domain walls (e.g., 180° domain wall) can be freely set with a proper choice of the inverse mobility μ in (3.6), that of the other type of wall (e.g., 90° domain wall) is automatically prescribed by the ratio of interfacial energies of the two types of domain walls. Furthermore, the Allen–Cahn model only furnishes an *approximately* linear kinetics behavior valid in the regime where both (3.9) and (3.25) are satisfied.¹³

¹² Note that, building upon existing phase-field models by Schrade et al. (2013), and Schrade et al. (2014), which account for electro-mechanical coupling, the extension of our model to deformable ferroelectrics is straightforward. Indeed, the passage from an Allen–Cahn-type phase-field model that includes electro-mechanical coupling (such as Schrade et al. 2013, and Schrade et al. 2014) to a general kinetic model is conceptually the same as what we have presented in Section 4 in the setting of rigid ferroelectrics.

¹³ In practice, the magnitude p_0/ϵ of the electric field that results from Gauss' law in charged walls is significantly larger than that of externally applied electric fields, so that (3.25) is the more stringent condition.

The general kinetics model, by contrast, provides a regularization of the sharp-interface model with arbitrary kinetic relations given by the functions G_{180} and G_{90} for 180° and 90° domain walls, respectively. More specifically, for straight walls of all types, we have shown with traveling wave solutions that the relations between wall velocities and associated driving tractions are exactly given by G_{180} and G_{90} , provided that the (little restrictive) conditions $\zeta < 2$ and $\zeta < 2\sqrt{2}h_{90}$ are satisfied. Overall, they again furnish upper bounds on the regularization length l .

In the present article, we have focused on analytically tractable features of the Allen–Cahn and general kinetics models. For that reason, we have restricted our attention to the properties and motion of straight domain walls. With this focus, we made the important clarification that with the Allen–Cahn model, the target kinetics is attained only in the limit of $\hat{l} \rightarrow 0$, while the general kinetics model furnishes exactly the chosen kinetics, irrespective of the regularization length, provided the latter satisfies specific upper bounds. We point out that, although our discussion was specific to ferroelectric domain wall motion, the same general kinetics model bears potential for other applications involving structural transformations.

In a follow-up publication, we will report a numerical implementation of the general kinetics model and address the propagation of curved walls as well as the behavior of triple and quadruple points where multiple phases meet.

CRediT authorship contribution statement

Laurent Guin: Conceptualization, Methodology, Validation, Formal analysis, Investigation, Writing – original draft, Writing – review & editing, Visualization. **Dennis M. Kochmann:** Conceptualization, Methodology, Writing – review & editing, Supervision.

Declaration of competing interest

The authors declare that they have no known competing financial interests or personal relationships that could have appeared to influence the work reported in this paper.

Data availability

No data was used for the research described in the article

Acknowledgments

The support from the Swiss National Science Foundation (SNSF) is gratefully acknowledged. The authors thank L. Hennecart, R. Indergand, and V. Kannan for stimulating discussions. We thank the anonymous reviewers for their useful comments on the manuscript.

Appendix. Experimental evidence on domain wall dynamics

180° Domain walls. Experimental and theoretical works have probed the kinetics of domain walls both in bulk single-crystals and in thin films (for an extensive review of these works, see [Tagantsev et al. 2010](#)). Here, we summarize results pertaining only to bulk BaTiO₃. The velocity of non-ferroelastic 180° domain walls was measured as a function of the electric field in single-crystal BaTiO₃ by [Miller and Savage \(1958, 1959, 1960\)](#), and [Savage and Miller \(1960\)](#) for electric fields in the range 0.1 to 2 kV/cm and by [Stadler and Zachmanidis \(1963\)](#) at large fields between 2 and 450 kV/cm. These experiments were performed on plate-like samples with polarization and electric field oriented along the out-of-plane \bar{e}_z -direction. As a result, the electric field $e = e\bar{e}_z$ is uniform throughout the sample and the driving traction given by (2.9) reduces to $f = 2p_0e$ for an interface with negligible curvature. For electric fields in the range 0.1 to 2 kV/cm, an inverse exponential dependence of the domain wall velocity on the electric field was inferred:

$$V_{180}(e) = V_l \exp(-e_a/e), \quad (\text{A.1})$$

where V_l is a characteristic velocity of the order of 100 cm/s, and the *activation field* e_a is typically about 4 kV/cm at room temperature ([Miller and Savage, 1960](#)). The exact value of these parameters depends on temperature, sample thickness, the presence of defects, and the nature of the electrodes. These observations suggest that for 180° domain walls in the range $f \leq 1 \times 10^5$ J/m³ (cf. $p_0 = 0.26$ C/m²), the driving traction follows a kinetic relation of inverse-exponential type, given by

$$V_{180}(f) = \text{sgn}(f)V_l \exp(-f_a/|f|), \quad (\text{A.2})$$

where $f_a = 2p_0e_a$ is an *activation driving traction*. Above 2 kV/cm the velocity was found to follow a power law $V_{180} \propto e^\theta$ with $\theta = 1.4$ ([Stadler and Zachmanidis, 1963](#)), which indicates for $f > 1 \times 10^5$ J/m³ a kinetic relation of the form

$$V_{180}(f) = \text{sgn}(f)V_h \left(\frac{|f|}{f_a} \right)^\theta, \quad (\text{A.3})$$

with V_h a characteristic velocity for large driving tractions.

90° Domain walls. While experimental data for the motion of 90° domain walls in BaTiO₃ are lacking, observations of the kinetics of ferroelastic domain walls in other materials (Rochelle salt, gadolinium molybdate, potassium dihydrogen phosphate as reviewed in Tagantsev et al. 2010, Section 8.3.3) point to a different kinetic relation specific to ferroelastic domain walls. Indeed, irrespective of the material, it appears that ferroelastic walls remain static for applied electric fields smaller than a threshold field, above which their velocity evolves linearly with the field. This suggests a threshold-type linear relation:

$$V_{90}(f) = \begin{cases} 0 & \text{for } |f| < f_0, \\ \text{sgn}(f)k(|f| - f_0) & \text{for } |f| \geq f_0, \end{cases} \quad (\text{A.4})$$

where f_0 is a threshold driving traction and k a kinetic coefficient. At the same time, *ab initio* calculations by Liu et al. (2016) have shown that 90° domain walls in PbTiO₃ exhibit the same two-regime kinetics as that observed for 180° domain walls in BaTiO₃ and described by (A.2) and (A.3) in the regimes of small and large electric fields, respectively. While we unfortunately do not have a full set of data for the kinetics of the different kinds of domain walls in one particular material, current observations clearly indicate that the kinetics of domain walls is nonlinear and dependent on the type of domain wall (i.e., non-ferroelastic vs. ferroelastic).

References

- Abeyaratne, R., Knowles, J.K., 1990. On the driving traction acting on a surface of strain discontinuity in a continuum. *J. Mech. Phys. Solids* 38 (3), 345–360. [http://dx.doi.org/10.1016/0022-5096\(90\)90003-m](http://dx.doi.org/10.1016/0022-5096(90)90003-m).
- Abeyaratne, R., Knowles, J.K., 2006. *Evolution of Phase Transitions*. Cambridge University Press, <http://dx.doi.org/10.1017/cbo9780511547133>.
- Agrawal, V., 2016. *Multiscale Phase-field Model for Phase Transformation and Fracture* (Ph.D. thesis). Carnegie Mellon University, URL https://kilthub.cmu.edu/articles/thesis/Multiscale_Phase-field_Model_for_Phase_Transformation_and_Fracture/6720785.
- Agrawal, V., Dayal, K., 2015a. A dynamic phase-field model for structural transformations and twinning: Regularized interfaces with transparent prescription of complex kinetics and nucleation. Part I: Formulation and one-dimensional characterization. *J. Mech. Phys. Solids* 85, 270–290. <http://dx.doi.org/10.1016/j.jmps.2015.04.010>.
- Agrawal, V., Dayal, K., 2015b. A dynamic phase-field model for structural transformations and twinning: Regularized interfaces with transparent prescription of complex kinetics and nucleation. Part II: Two-dimensional characterization and boundary kinetics. *J. Mech. Phys. Solids* 85, 291–307. <http://dx.doi.org/10.1016/j.jmps.2015.05.001>.
- Ahluwalia, R., Cao, W., 2001. Size dependence of domain patterns in a constrained ferroelectric system. *J. Appl. Phys.* 89 (12), 8105–8109. <http://dx.doi.org/10.1063/1.1371282>.
- Alber, H.-D., Zhu, P., 2005. Solutions to a model with nonuniformly parabolic terms for phase evolution driven by configurational forces. *SIAM J. Appl. Math.* 66 (2), 680–699. <http://dx.doi.org/10.1137/050629951>.
- Alber, H.-D., Zhu, P., 2007. Evolution of phase boundaries by configurational forces. *Arch. Ration. Mech. Anal.* 185 (2), 235–286. <http://dx.doi.org/10.1007/s00205-007-0054-8>.
- Alber, H.-D., Zhu, P., 2013. Comparison of a rapidly converging phase field model for interfaces in solids with the Allen-Cahn model. *J. Elasticity* 111 (2), 153–221. <http://dx.doi.org/10.1007/s10659-012-9398-x>.
- Allen, S.M., Cahn, J.W., 1979. A microscopic theory for antiphase boundary motion and its application to antiphase domain coarsening. *Acta Metall.* 27 (6), 1085–1095. [http://dx.doi.org/10.1016/0001-6160\(79\)90196-2](http://dx.doi.org/10.1016/0001-6160(79)90196-2).
- Arlt, G., Sasko, P., 1980. Domain configuration and equilibrium size of domains in BaTiO₃ ceramics. *J. Appl. Phys.* 51 (9), 4956–4960. <http://dx.doi.org/10.1063/1.328372>.
- Brainerd, J.G., 1949. Standards on piezoelectric crystals, 1949. *Proc. IRE* 37 (12), 1378–1395. <http://dx.doi.org/10.1109/JRPROC.1949.229975>.
- Bulaevskii, L.N., Ginzburg, V.L., 1964. Temperature dependence of the shape of the domain wall in ferromagnetics and ferroelectrics. *Sov. Phys. JETP* 18 (530), 5.
- Cao, W., Cross, L.E., 1991. Theory of tetragonal twin structures in ferroelectric perovskites with a first-order phase transition. *Phys. Rev. B* 44 (1), 5–12. <http://dx.doi.org/10.1103/physrevb.44.5>.
- Chen, X., Dong, X., Zhang, H., Cao, F., Wang, G., Gu, Y., He, H., Liu, Y., 2011. Frequency dependence of coercive field in soft Pb(Zr_{1-x}Ti_x)O₃ (0.20 ≤ x ≤ 0.60) bulk ceramics. In: Li, W. (Ed.), *J. Am. Ceram. Soc.* 94 (12), 4165–4168. <http://dx.doi.org/10.1111/j.1551-2916.2011.04913.x>.
- Flaschel, M., De Lorenzis, L., 2020. Calibration of material parameters based on 180° and 90° ferroelectric domain wall properties in Ginzburg–Landau–devonshire phase field models. *Arch. Appl. Mech.* 90 (12), 2755–2774. <http://dx.doi.org/10.1007/s00419-020-01747-7>.
- Fried, E., Gurtin, M., 1994. Dynamic solid-solid transitions with phase characterized by an order parameter. *Physica D* 72 (4), 287–308. [http://dx.doi.org/10.1016/0167-2789\(94\)90234-8](http://dx.doi.org/10.1016/0167-2789(94)90234-8).
- Genenko, Y.A., Zhukov, S., Yampolskii, S.V., Schürumpf, J., Dittmer, R., Jo, W., Kungl, H., Hoffmann, M.J., von Seggern, H., 2012. Universal polarization switching behavior of disordered ferroelectrics. *Adv. Funct. Mater.* 22 (10), 2058–2066. <http://dx.doi.org/10.1002/adfm.201102841>.
- Gordon, A., 1986. Interface motion in ferroelectrics. *Phys. B+C* 138 (3), 239–243. [http://dx.doi.org/10.1016/0378-4363\(86\)90002-1](http://dx.doi.org/10.1016/0378-4363(86)90002-1).
- Gurtin, M.E., 1993. *Thermomechanics of Evolving Phase Boundaries in the Plane*. Clarendon Press.
- Gurtin, M.E., 2000. *Configurational Forces as Basic Concepts of Continuum Physics*. Springer New York, <http://dx.doi.org/10.1007/b97847>.
- Gurtin, M.E., Fried, E., Anand, L., 2009. *The Mechanics and Thermodynamics of Continua*. Cambridge University Press, <http://dx.doi.org/10.1017/cbo9780511762956>.
- Hou, T.Y., Rosakis, P., LeFloch, P., 1999. A level-set approach to the computation of twinning and phase-transition dynamics. *J. Comput. Phys.* 150 (2), 302–331. <http://dx.doi.org/10.1006/jcph.1998.6179>.
- Hu, H.-L., Chen, L.-Q., 1997. Computer simulation of 90° ferroelectric domain formation in two-dimensions. *Mater. Sci. Eng. A* 238 (1), 182–191. [http://dx.doi.org/10.1016/s0921-5093\(97\)00453-x](http://dx.doi.org/10.1016/s0921-5093(97)00453-x).
- Hu, H.-L., Chen, L.-Q., 1998. Three-dimensional computer simulation of ferroelectric domain formation. *J. Am. Ceram. Soc.* 81 (3), 492–500. <http://dx.doi.org/10.1111/j.1151-2916.1998.tb02367.x>.
- Hubmann, A.H., Li, S., Zhukov, S., von Seggern, H., Klein, A., 2016. Polarisation dependence of Schottky barrier heights at ferroelectric BaTiO₃/RuO₂ interfaces: influence of substrate orientation and quality. *J. Phys. D: Appl. Phys.* 49 (29), 295304. <http://dx.doi.org/10.1088/0022-3727/49/29/295304>.
- Indergand, R., 2019. *Finite-Temperature Phase Field Simulations of Ferroelectric Ceramics* (Unpublished). ETH Zurich.
- Indergand, R., Vidyasagar, A., Nadkarni, N., Kochmann, D.M., 2020. A phase-field approach to studying the temperature-dependent ferroelectric response of bulk polycrystalline PZT. *J. Mech. Phys. Solids* 144, 104098. <http://dx.doi.org/10.1016/j.jmps.2020.104098>.
- Ishiwara, H., Okuyama, M., Arimoto, Y. (Eds.), 2004. *Ferroelectric Random Access Memories*. Springer Berlin Heidelberg, <http://dx.doi.org/10.1007/b12953>.
- Jiang, Q., 1994a. On modeling of phase transformations in ferroelectric materials. *Acta Mech.* 102 (1–4), 149–165. <http://dx.doi.org/10.1007/bf01178524>.

- Jiang, Q., 1994b. On the driving traction acting on a surface of discontinuity within a continuum in the presence of electromagnetic fields. *J. Elasticity* 34 (1), 1–21. <http://dx.doi.org/10.1007/bf00042423>.
- Jo, J.Y., Yang, S.M., Kim, T.H., Lee, H.N., Yoon, J.-G., Park, S., Jo, Y., Jung, M.H., Noh, T.W., 2009. Nonlinear dynamics of domain-wall propagation in epitaxial ferroelectric thin films. *Phys. Rev. Lett.* 102 (4), <http://dx.doi.org/10.1103/physrevlett.102.045701>.
- Kamlah, M., 2001. Ferroelectric and ferroelastic piezoceramics – modeling of electromechanical hysteresis phenomena. *Contin. Mech. Thermodyn.* 13 (4), 219–268. <http://dx.doi.org/10.1007/s001610100052>.
- Kannan, V., Trassin, M., Kochmann, D.M., 2022. Kinetics of ferroelectric switching in poled barium titanate ceramics: Effects of electrical cycling rate. *Materialia* 25, 101553. <http://dx.doi.org/10.1016/j.mtla.2022.101553>.
- Kessler, H., Balke, H., 2006. A continuum analysis of the driving force of ferroelectric/ferroelastic domain wall motions. *J. Mech. Phys. Solids* 54 (1), 113–127. <http://dx.doi.org/10.1016/j.jmps.2005.08.004>.
- Landau, L.D., Lifshitz, E., 1935. On the theory of the dispersion of magnetic permeability in ferromagnetic bodies. *Phys. Zeitsch. Der Sowjet.* 8, 153–169, URL <http://cds.cern.ch/record/437299>.
- Li, Y.L., Hu, S.Y., Liu, Z.K., Chen, L.Q., 2001. Phase-field model of domain structures in ferroelectric thin films. *Appl. Phys. Lett.* 78 (24), 3878–3880. <http://dx.doi.org/10.1063/1.1377855>.
- Little, E.A., 1955. Dynamic behavior of domain walls in barium titanate. *Phys. Rev.* 98 (4), 978–984. <http://dx.doi.org/10.1103/physrev.98.978>.
- Liu, S., Grinberg, I., Rappe, A.M., 2016. Intrinsic ferroelectric switching from first principles. *Nature* 534 (7607), 360–363. <http://dx.doi.org/10.1038/nature18286>.
- Loge, R., Suo, Z., 1996. Nonequilibrium thermodynamics of ferroelectric domain evolution. *Acta Mater.* 44 (8), 3429–3438. [http://dx.doi.org/10.1016/1359-6454\(95\)00425-4](http://dx.doi.org/10.1016/1359-6454(95)00425-4).
- Merz, W.J., 1954. Domain formation and domain wall motions in ferroelectric BaTiO₃ single crystals. *Phys. Rev.* 95 (3), 690–698. <http://dx.doi.org/10.1103/physrev.95.690>.
- Merz, W.J., 1956. Switching time in ferroelectric BaTiO₃ and its dependence on crystal thickness. *J. Appl. Phys.* 27 (8), 938–943. <http://dx.doi.org/10.1063/1.1722518>.
- Miller, R.C., Savage, A., 1958. Velocity of sidewise 180° domain-wall motion in BaTiO₃ as a function of the applied electric field. *Phys. Rev.* 112 (3), 755–762. <http://dx.doi.org/10.1103/physrev.112.755>.
- Miller, R.C., Savage, A., 1959. Further experiments on the sidewise motion of 180° domain walls in BaTiO₃. *Phys. Rev.* 115 (5), 1176–1180. <http://dx.doi.org/10.1103/physrev.115.1176>.
- Miller, R.C., Savage, A., 1960. Motion of 180° domain walls in metal electroded barium titanate crystals as a function of electric field and sample thickness. *J. Appl. Phys.* 31 (4), 662–669. <http://dx.doi.org/10.1063/1.1735663>.
- Miller, R.C., Weinreich, G., 1960. Mechanism for the sidewise motion of 180° domain walls in barium titanate. *Phys. Rev.* 117 (6), 1460–1466. <http://dx.doi.org/10.1103/physrev.117.1460>.
- Mueller, R., Gross, D., Lupascu, D., 2006. Driving forces on domain walls in ferroelectric materials and interaction with defects. *Comput. Mater. Sci.* 35 (1), 42–52. <http://dx.doi.org/10.1016/j.commatsci.2005.02.014>.
- Nambu, S., Sagala, D.A., 1994. Domain formation and elastic long-range interaction in ferroelectric perovskites. *Phys. Rev. B* 50 (9), 5838–5847. <http://dx.doi.org/10.1103/physrevb.50.5838>.
- Osher, S., Sethian, J.A., 1988. Fronts propagating with curvature-dependent speed: Algorithms based on Hamilton-Jacobi formulations. *J. Comput. Phys.* 79 (1), 12–49. [http://dx.doi.org/10.1016/0021-9991\(88\)90002-2](http://dx.doi.org/10.1016/0021-9991(88)90002-2).
- Rezaee-Hajidehi, M., Stupkiewicz, S., 2021. Micromorphic approach to phase-field modeling of multivariant martensitic transformation with rate-independent dissipation effects. *Int. J. Solids Struct.* 222–223, 111027. <http://dx.doi.org/10.1016/j.ijsolstr.2021.03.014>.
- Rosakis, P., Jiang, Q., 1995. On the morphology of ferroelectric domains. *Internat. J. Engng. Sci.* 33 (1), 1–12. [http://dx.doi.org/10.1016/0020-7225\(94\)00039-1](http://dx.doi.org/10.1016/0020-7225(94)00039-1).
- Savage, A., Miller, R.C., 1960. Temperature dependence of the velocity of sidewise 180° domain-wall motion in BaTiO₃. *J. Appl. Phys.* 31 (9), 1546–1549. <http://dx.doi.org/10.1063/1.1735890>.
- Schmidt, N.A., 1981. Coercive force and 90° domain wall motion in ferroelectric PLZT ceramics with square hysteresis loops. *Ferroelectrics* 31 (1), 105–111. <http://dx.doi.org/10.1080/00150198108201980>.
- Schrade, D., Müller, R., Gross, D., 2013. On the physical interpretation of material parameters in phase field models for ferroelectrics. *Arch. Appl. Mech.* 83 (10), 1393–1413. <http://dx.doi.org/10.1007/s00419-013-0754-5>.
- Schrade, D., Müller, R., Gross, D., Keip, M.-A., Thai, H., Schröder, J., 2014. An invariant formulation for phase field models in ferroelectrics. *Int. J. Solids Struct.* 51 (11–12), 2144–2156. <http://dx.doi.org/10.1016/j.ijsolstr.2014.02.021>.
- Schultheiß, J., Kungl, H., Koruza, J., 2019. Influence of crystallographic structure on polarization reversal in polycrystalline ferroelectric/ferroelastic materials. *J. Appl. Phys.* 125 (17), 174101. <http://dx.doi.org/10.1063/1.5081086>.
- Schultheiß, J., Liu, L., Kungl, H., Weber, M., Venkataraman, L.K., Checchia, S., Damjanovic, D., Daniels, J.E., Koruza, J., 2018. Revealing the sequence of switching mechanisms in polycrystalline ferroelectric/ferroelastic materials. *Acta Mater.* 157, 355–363. <http://dx.doi.org/10.1016/j.actamat.2018.07.018>.
- Shin, Y.-H., Grinberg, I., Chen, I.-W., Rappe, A.M., 2007. Nucleation and growth mechanism of ferroelectric domain-wall motion. *Nature* 449 (7164), 881–884. <http://dx.doi.org/10.1038/nature06165>.
- Stadler, H.L., Zachmanidis, P.J., 1963. Nucleation and growth of ferroelectric domains in BaTiO₃ at fields from 2 to 450 kV/cm. *J. Appl. Phys.* 34 (11), 3255–3260. <http://dx.doi.org/10.1063/1.1729173>.
- Su, Y., Landis, C.M., 2007. Continuum thermodynamics of ferroelectric domain evolution: Theory, finite element implementation, and application to domain wall pinning. *J. Mech. Phys. Solids* 55 (2), 280–305. <http://dx.doi.org/10.1016/j.jmps.2006.07.006>.
- Tagantsev, A.K., Cross, L.E., Fousek, J., 2010. *Domains in Ferroic Crystals and Thin Films*. Springer New York, <http://dx.doi.org/10.1007/978-1-4419-1417-0>.
- Truskinovsky, L., 1987. Dynamics of non-equilibrium phase boundaries in a heat conducting non-linearly elastic medium. *J. Appl. Math. Mech.* 51 (6), 777–784. [http://dx.doi.org/10.1016/0021-8928\(87\)90140-7](http://dx.doi.org/10.1016/0021-8928(87)90140-7).
- Tůma, K., Stupkiewicz, S., Petryk, H., 2018. Rate-independent dissipation in phase-field modelling of displacive transformations. *J. Mech. Phys. Solids* 114, 117–142. <http://dx.doi.org/10.1016/j.jmps.2018.02.007>.
- Tybell, T., Paruch, P., Giamarchi, T., Triscone, J.-M., 2002. Domain wall creep in epitaxial FerroelectricPb(zr_{0.2}ti_{0.8})o₃thin films. *Phys. Rev. Lett.* 89 (9), <http://dx.doi.org/10.1103/physrevlett.89.097601>.
- Uchino, K., 2018. *Ferroelectric Devices*. CRC Press.
- Vidyaasagar, A., Tan, W., Kochmann, D., 2017. Predicting the effective response of bulk polycrystalline ferroelectric ceramics via improved spectral phase field methods. *J. Mech. Phys. Solids* 106, 133–151. <http://dx.doi.org/10.1016/j.jmps.2017.05.017>.
- Wieder, H.H., 1957. Activation field and coercivity of ferroelectric barium titanate. *J. Appl. Phys.* 28 (3), 367–369. <http://dx.doi.org/10.1063/1.1722749>.
- Yang, W., Chen, L.-Q., 1995. Computer simulation of the dynamics of 180° ferroelectric domains. *J. Am. Ceram. Soc.* 78 (9), 2554–2556. <http://dx.doi.org/10.1111/j.1151-2916.1995.tb08702.x>.
- Yin, J., Cao, W., 2002. Coercive field of 0.955Pb(Zn_{1/3}Nb_{2/3})O₃–0.045PbTiO₃ single crystal and its frequency dependence. *Appl. Phys. Lett.* 80 (6), 1043–1045. <http://dx.doi.org/10.1063/1.1448385>.
- Zhang, W., Bhattacharya, K., 2005a. A computational model of ferroelectric domains. Part I: model formulation and domain switching. *Acta Mater.* 53 (1), 185–198. <http://dx.doi.org/10.1016/j.actamat.2004.09.016>.
- Zhang, W., Bhattacharya, K., 2005b. A computational model of ferroelectric domains. Part II: grain boundaries and defect pinning. *Acta Mater.* 53 (1), 199–209. <http://dx.doi.org/10.1016/j.actamat.2004.09.015>.
- Zhirnov, V.A., 1959. A contribution to the theory of domain walls in ferroelectrics. *Sov. Phys. JETP* 35 (5), 822–827.